

ARG22215 anti-alpha A Crystallin antibody [1H3.B8]

Package: 100 µg
Store at: -20°C

Summary

Product Description	Mouse Monoclonal antibody [1H3.B8] recognizes alpha A Crystallin
Tested Reactivity	Hu, Ms, Rat, Bov
Tested Application	ELISA, ICC/IF, WB
Specificity	Detects ~20kDa. Does not cross-react with αB-crystallin, βL-crystallin, BH- crystallin, γ-crystallin, HSP25, HSP27 or HSP47 proteins.
Host	Mouse
Clonality	Monoclonal
Clone	1H3.B8
Isotype	IgG1
Target Name	alpha A Crystallin
Species	Human
Immunogen	Native Alpha Crystallin
Conjugation	Un-conjugated
Alternate Names	CRYA1; HSPB4; CTRCT9

Application Instructions

Application table	Application	Dilution
	ELISA	Assay-dependent
	ICC/IF	1:100
	WB	1:2000
Application Note	* The dilutions indicate recommended starting dilutions and the optimal dilutions or concentrations should be determined by the scientist.	

Properties

Form	Liquid
Purification	Purification with Protein G.
Buffer	PBS (pH 7.2), 0.09% Sodium azide and 50% Glycerol
Preservative	0.09% Sodium azide
Stabilizer	50% Glycerol
Concentration	1 mg/ml
Storage instruction	For continuous use, store undiluted antibody at 2-8°C for up to a week. For long-term storage, aliquot and store at -20°C. Storage in frost free freezers is not recommended. Avoid repeated freeze/thaw

cycles. Suggest spin the vial prior to opening. The antibody solution should be gently mixed before use.

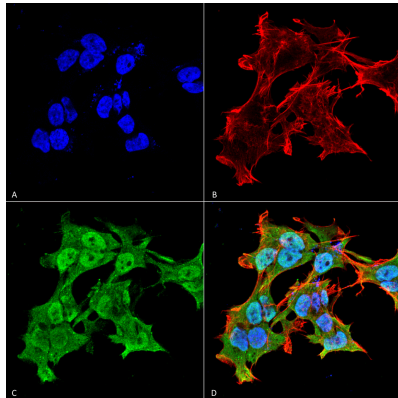
Note

For laboratory research only, not for drug, diagnostic or other use.

Bioinformation

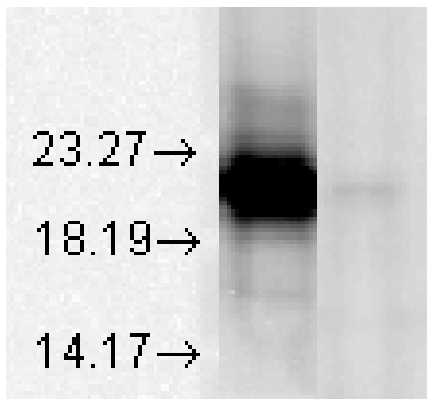
Database links

Images



ARG22215 anti-alpha A Crystallin antibody [1H3.B8] ICC/IF image

Immunofluorescence: Human Neuroblastoma cell line SK-N-BE. Fixation: 4% Formaldehyde for 15 min at RT. Primary Antibody: ARG22215 anti-alpha A Crystallin antibody [1H3.B8] at 1:100 for 60 min at RT. Secondary Antibody: Goat anti-Mouse ATTO 488 at 1:100 for 60 min at RT. Counterstain: Phalloidin Texas Red F-Actin stain; DAPI (blue) nuclear stain at 1:1000, 1:5000 for 60min RT, 5min RT. Magnification: 60X. (A) DAPI (blue) nuclear stain. (B) Phalloidin Texas Red F-Actin stain. (C) ARG22215 anti-alpha A Crystallin antibody [1H3.B8]. (D) Composite.



ARG22215 anti-alpha A Crystallin antibody [1H3.B8] WB image

Western blot: Bovine tissue lysate stained with ARG22215 anti-alpha A Crystallin antibody [1H3.B8] at 1:1000 dilution. This blot shows absolute specificity as Left: AlphaA Crystallin, Right: AlphaB Crystallin.