

ARG22220 anti-Calreticulin antibody

Package: 100 µl
Store at: -20°C

Summary

Product Description	Rabbit Polyclonal antibody recognizes Calreticulin
Tested Reactivity	Hu, Ms, Rat, Bov, Chk, Dog, Gpig, Hm, Mk, Pig, Rb, Sheep
Tested Application	FACS, ICC/IF, IHC-P, IP, WB
Specificity	Detects ~63kDa.
Host	Rabbit
Clonality	Polyclonal
Target Name	Calreticulin
Species	Human
Immunogen	KLH-conjugated synthetic peptide from Human calreticulin (with a cysteine residue added)
Conjugation	Un-conjugated
Alternate Names	CALR; Calreticulin; Calregulin; CC1qR; SSA; CRT; RO; Sicca Syndrome Antigen A (Autoantigen Ro; Calreticulin); Endoplasmic Reticulum Resident Protein 60; FLJ26680; CALR1; CRP55; ERp60; HACBP; Grp60; Epididymis Secretory Sperm Binding Protein Li 99n; Autoantigen Ro; HEL-S-99n; CRTC

Application Instructions

Application table	Application	Dilution
	FACS	Assay-dependent
	ICC/IF	1:100
	IHC-P	Assay-dependent
	IP	Assay-dependent
	WB	1:1000
Application Note	* The dilutions indicate recommended starting dilutions and the optimal dilutions or concentrations should be determined by the scientist.	

Properties

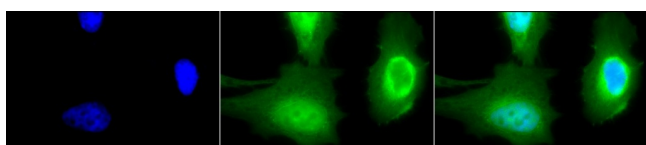
Form	Liquid
Purification	Affinity purification with immunogen.
Buffer	PBS (pH 7.4), 0.09% Sodium azide and 50% Glycerol
Preservative	0.09% Sodium azide
Stabilizer	50% Glycerol
Concentration	1 mg/ml

Storage instruction	For continuous use, store undiluted antibody at 2-8°C for up to a week. For long-term storage, aliquot and store at -20°C. Storage in frost free freezers is not recommended. Avoid repeated freeze/thaw cycles. Suggest spin the vial prior to opening. The antibody solution should be gently mixed before use.
Note	For laboratory research only, not for drug, diagnostic or other use.

Bioinformation

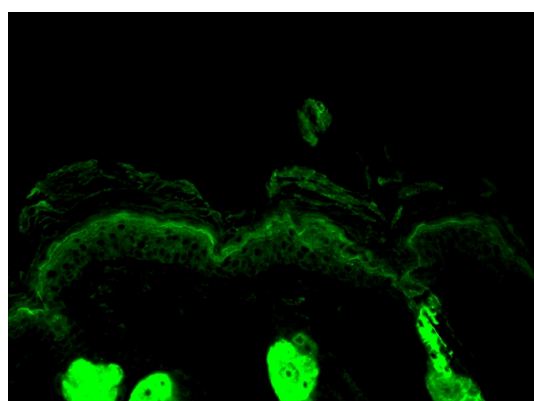
Gene Symbol	CALR
Gene Full Name	calreticulin
Background	Calreticulin is a highly conserved chaperone protein which resides primarily in the endoplasmic reticulum, and is involved in a variety of cellular processes, among them, cell adhesion. Additionally, it functions in protein folding quality control and calcium homeostasis. Calreticulin is also found in the nucleus, suggesting that it may have a role in transcription regulation. Systemic lupus erythematosus is associated with increased autoantibody titers against calreticulin. Recurrent mutations in calreticulin have been linked to various neoplasms, including the myeloproliferative type.
Function	Calcium-binding chaperone that promotes folding, oligomeric assembly and quality control in the endoplasmic reticulum (ER) via the calreticulin/calnexin cycle. This lectin interacts transiently with almost all of the monoglucosylated glycoproteins that are synthesized in the ER.
Research Area	Controls and Markers antibody; Signaling Transduction antibody; ER Marker antibody; Endoplasmic reticulum antibody
Calculated Mw	48 kDa
PTM	Acetylation, Disulfide bond, Glycoprotein, Hydroxylation
Cellular Localization	Cytoplasm, Cytoplasmic vesicle, Endoplasmic reticulum, Extracellular matrix, Lysosome, Sarcoplasmic reticulum, Secreted

Images



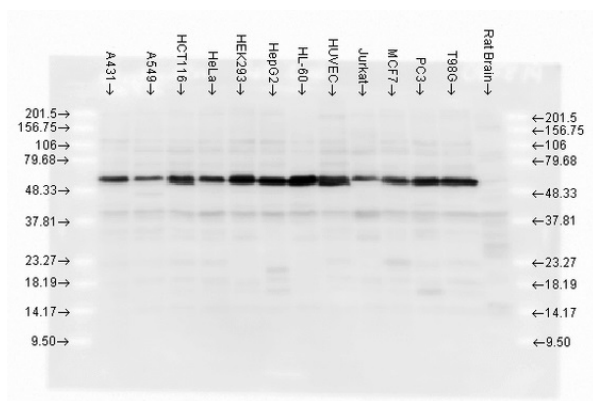
ARG22220 anti-Calreticulin antibody ICC/IF image

Immunocytochemistry: 2% Formaldehyde (20 min at RT) fixed Heat Shocked HeLa cells stained with ARG22220 anti-Calreticulin antibody (green) at 1:100 dilution (12 hours at 4°C). Counterstain: DAPI (blue) nuclear stain at 1:40000 for 120 min at RT. Magnification: 100x. Left: DAPI (blue) nuclear stain, Middle: Primary antibody, Right: Composite.



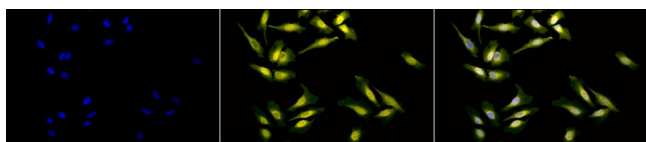
ARG22220 anti-Calreticulin antibody IHC image

Immunohistochemistry: Bouin solution fixed Mouse backskin stained with ARG22220 anti-Calreticulin antibody (green) at 1:100 dilution (1 hour).



ARG22220 anti-Calreticulin antibody WB image

Western blot: 15 µg of A431, A549, HCT116, HeLa, HEK293, HepG2, HL-60, HUVEC, Jurkat, MCF7, PC3, T98G, and Rat brain lysates stained with ARG22220 anti-Calreticulin antibody at 1:1000 dilution.



ARG22220 anti-Calreticulin antibody ICC/IF image

Immunocytochemistry: 2% Formaldehyde (20 min at RT) fixed Heat Shocked HeLa cells stained with ARG22220 anti-Calreticulin antibody (yellow) at 1:100 dilution (12 hours at 4°C). Counterstain: DAPI (blue) nuclear stain at 1:40000 for 120 min at RT. Magnification: 20x. Left: DAPI (blue) nuclear stain, Middle: Primary antibody, Right: Composite.