

ARG22262 anti-SAP102 antibody [S19-2]

Package: 50 µg
Store at: -20°C

Summary

Product Description	Mouse Monoclonal antibody [S19-2] recognizes SAP102
Tested Reactivity	Hu, Ms, Rat
Tested Application	ICC/IF, IHC, IP, WB
Specificity	Detects ~105kDa. No cross-reactivity against PSD95, SAP97 or Chapsyn-110.
Host	Mouse
Clonality	Monoclonal
Clone	S19-2
Isotype	IgG1
Target Name	SAP102
Species	Rat
Immunogen	Fusion protein around aa. 1-120 of Rat SAP102
Conjugation	Un-conjugated
Alternate Names	MRX; SAP102; NEDLG; SAP-102; Neuroendocrine-DLG; Synapse-associated protein 102; MRX90; Disks large homolog 3; PPP1R82; XLMR

Application Instructions

Application table	Application	Dilution
	ICC/IF	1:100
	IHC	Assay-dependent
	IP	Assay-dependent
	WB	1:1000
Application Note	* The dilutions indicate recommended starting dilutions and the optimal dilutions or concentrations should be determined by the scientist.	

Properties

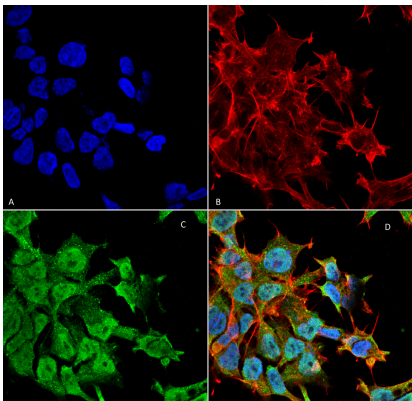
Form	Liquid
Purification	Purification with Protein G.
Buffer	PBS (pH 7.4), 0.09% Sodium azide and 50% Glycerol
Preservative	0.09% Sodium azide
Stabilizer	50% Glycerol
Concentration	1 mg/ml

Storage instruction	For continuous use, store undiluted antibody at 2-8°C for up to a week. For long-term storage, aliquot and store at -20°C. Storage in frost free freezers is not recommended. Avoid repeated freeze/thaw cycles. Suggest spin the vial prior to opening. The antibody solution should be gently mixed before use.
Note	For laboratory research only, not for drug, diagnostic or other use.

Bioinformation

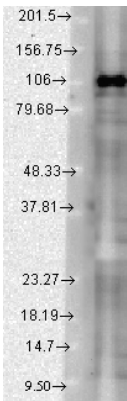
Gene Symbol	Dlg3
Gene Full Name	discs, large homolog 3 (Drosophila)
Background	This gene encodes a member of the membrane-associated guanylate kinase protein family. The encoded protein may play a role in clustering of NMDA receptors at excitatory synapses. It may also negatively regulate cell proliferation through interaction with the C-terminal region of the adenomatosis polyposis coli tumor suppressor protein. Mutations in this gene have been associated with X-linked mental retardation. Alternatively spliced transcript variants have been described. [provided by RefSeq, Oct 2009]
Function	Required for learning most likely through its role in synaptic plasticity following NMDA receptor signaling. [UniProt]
Calculated Mw	90 kDa
Cellular Localization	Cytoplasm, Basolateral Cell Membrane, Cell Junction, growth cone, postsynaptic cell membrane, postsynaptic density, Synapse

Images



ARG22262 anti-SAP102 antibody [S19-2] ICC/IF image

Immunofluorescence: Human Neuroblastoma cell line SK-N-BE. Fixation: 4% Formaldehyde for 15 min at RT. Primary Antibody: ARG22262 anti-SAP102 antibody [S19-2] at 1:100 for 60 min at RT. Secondary Antibody: Goat anti-Mouse ATTO 488 at 1:100 for 60 min at RT. Counterstain: Phalloidin Texas Red F-Actin stain; DAPI (blue) nuclear stain. Magnification: 60X. (A) DAPI (blue) nuclear stain (B) Phalloidin Texas Red F-Actin stain (C) ARG22262 anti-SAP102 antibody [S19-2] (D) Composite.



ARG22262 anti-SAP102 antibody [S19-2] WB image

Western blot: Rat brain lysates stained with ARG22262 anti-SAP102 antibody [S19-2] at 1:1000 dilution.