

ARG22296 anti-RAB4 antibody

Package: 50 µl
Store at: -20°C

Summary

Product Description	Rabbit Polyclonal antibody recognizes RAB4
Tested Reactivity	Hu, Ms, Rat
Tested Application	ICC/IF, IHC-P, WB
Specificity	Detects ~ 26 kDa.
Host	Rabbit
Clonality	Polyclonal
Target Name	RAB4
Species	Human
Immunogen	C-terminal peptide from Human RAB4
Conjugation	Un-conjugated
Alternate Names	Ras-related protein Rab-4A; HRES1; RAB4; HRES-1; HRES-1/RAB4

Application Instructions

Application table	Application	Dilution
	ICC/IF	1:150
	IHC-P	1:150
	WB	1:1000
Application Note	* The dilutions indicate recommended starting dilutions and the optimal dilutions or concentrations should be determined by the scientist.	

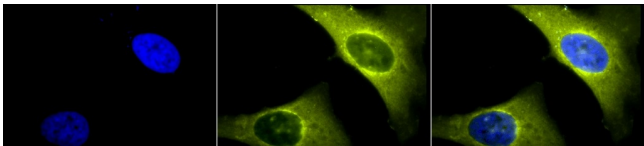
Properties

Form	Liquid
Purification	Affinity purification with immunogen.
Buffer	PBS (pH 7.4), 0.09% Sodium azide and 50% Glycerol
Preservative	0.09% Sodium azide
Stabilizer	50% Glycerol
Concentration	1 mg/ml
Storage instruction	For continuous use, store undiluted antibody at 2-8°C for up to a week. For long-term storage, aliquot and store at -20°C. Storage in frost free freezers is not recommended. Avoid repeated freeze/thaw cycles. Suggest spin the vial prior to opening. The antibody solution should be gently mixed before use.
Note	For laboratory research only, not for drug, diagnostic or other use.

Bioinformation

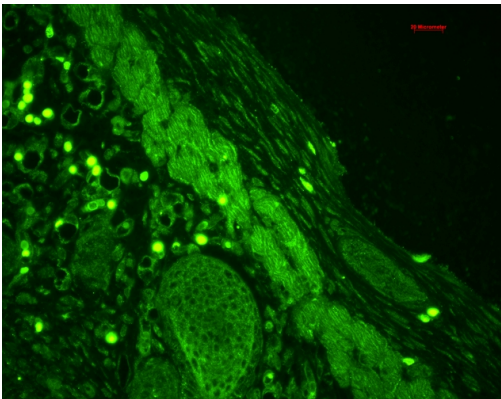
Gene Symbol	RAB4A
Gene Full Name	RAB4A, member RAS oncogene family
Background	This gene is a member of the largest group in the Ras superfamily of small GTPases, which regulate membrane trafficking. The encoded protein is associated with early endosomes and is involved in their sorting and recycling. The protein also plays a role in regulating the recycling of receptors from endosomes to the plasma membrane. Alternatively spliced transcript variants have been observed for this gene. [provided by RefSeq, Dec 2012]
Function	Protein transport. Probably involved in vesicular traffic (By similarity). [UniProt]
Calculated Mw	24 kDa
PTM	Phosphorylated by CDK1 kinase during mitosis.
Cellular Localization	Cytoplasm, Membrane

Images



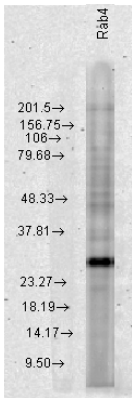
ARG22296 anti-RAB4 antibody ICC/IF image

Immunocytochemistry: 2% Formaldehyde (20 min at RT) fixed Heat Shocked HeLa cells stained with ARG22296 anti-RAB4 antibody (yellow) at 1:150 dilution (12 hours at 4°C). Counterstain: DAPI (blue) nuclear stain at 1:40000 for 120 min at RT. Magnification: 100x. Left: DAPI (blue) nuclear stain, Middle: Primary antibody, Right: Composite.



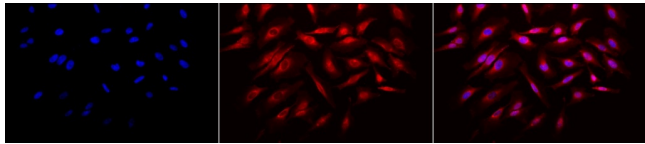
ARG22296 anti-RAB4 antibody IHC image

Immunohistochemistry: Bouin solution fixed Mouse backskin stained with ARG22296 anti-RAB4 antibody (green) at 1:100 dilution (1 hour).



ARG22296 anti-RAB4 antibody WB image

Western blot: Human HeLa cell lysates stained with ARG22296 anti-RAB4 antibody at 1:1000 dilution.



ARG22296 anti-RAB4 antibody ICC/IF image

Immunocytochemistry: 2% Formaldehyde (20 min at RT) fixed Heat Shocked HeLa cells stained with ARG22296 anti-RAB4 antibody (red) at 1:150 dilution (12 hours at 4°C). Counterstain: DAPI (blue) nuclear stain at 1:40000 for 120 min at RT. Magnification: 20x. Left: DAPI (blue) nuclear stain, Middle: Primary antibody, Right: Composite.