

ARG22297 anti-AHA1 antibody

Package: 50 µl
Store at: -20°C

Summary

| | |
|---------------------|-----------------------------------------------------------------------------|
| Product Description | Rabbit Polyclonal antibody recognizes AHA1 |
| Tested Reactivity | Hu, Ms, Rat |
| Tested Application | ELISA, ICC/IF, IHC, IP, WB |
| Specificity | Detects ~38kDa. |
| Host | Rabbit |
| Clonality | Polyclonal |
| Target Name | AHA1 |
| Species | Mouse |
| Immunogen | Mouse Aha1 |
| Conjugation | Un-conjugated |
| Alternate Names | C14orf3; p38; AHA1; Activator of 90 kDa heat shock protein ATPase homolog 1 |

Application Instructions

| Application table | Application | Dilution |
|-------------------|-------------|-----------------|
| | ELISA | Assay-dependent |
| | ICC/IF | 1:60 |
| | IHC | Assay-dependent |
| | IP | Assay-dependent |
| | WB | 1:1000 |

Application Note * The dilutions indicate recommended starting dilutions and the optimal dilutions or concentrations should be determined by the scientist.

Properties

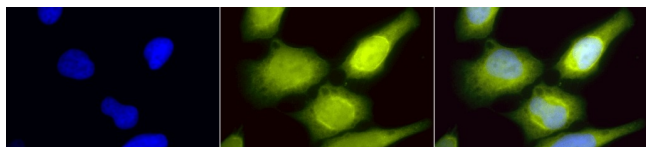
| | |
|---------------------|-------------------------------------------------------------------------------------------------------------------------------------------------------------------------------------------------------------------------------------------------------------------------------------------------------------------|
| Form | Liquid |
| Purification | Purification with Protein A. |
| Buffer | PBS (pH 7.4), 0.09% Sodium azide and 50% Glycerol |
| Preservative | 0.09% Sodium azide |
| Stabilizer | 50% Glycerol |
| Concentration | 1 mg/ml |
| Storage instruction | For continuous use, store undiluted antibody at 2-8°C for up to a week. For long-term storage, aliquot and store at -20°C. Storage in frost free freezers is not recommended. Avoid repeated freeze/thaw cycles. Suggest spin the vial prior to opening. The antibody solution should be gently mixed before use. |

Note For laboratory research only, not for drug, diagnostic or other use.

Bioinformation

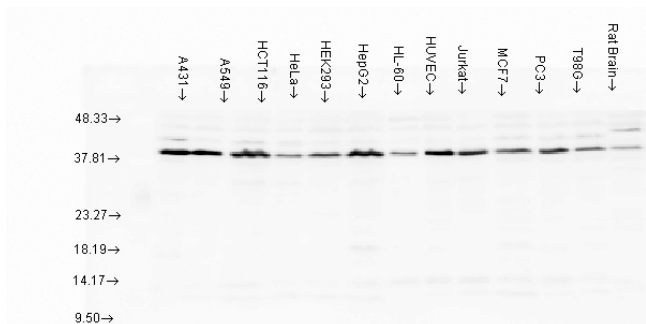
| | |
|-----------------------|-----------------------------------------------------------------------------------------------------------------------------------------------------------------------|
| Database links | GeneID: 10598 Human GeneID: 217737 Mouse Swiss-port # O95433 Human Swiss-port # Q8BK64 Mouse |
| Gene Symbol | Ahsa1 |
| Gene Full Name | AHA1, activator of heat shock protein ATPase 1 |
| Function | Cochaperone that stimulates HSP90 ATPase activity (By similarity). May affect a step in the endoplasmic reticulum to Golgi trafficking. [UniProt] |
| Calculated Mw | 38 kDa |
| Cellular Localization | Cytoplasm, Endoplasmic Reticulum |

Images



ARG22297 anti-AHA1 antibody ICC/IF image

Immunocytochemistry: 2% Formaldehyde (20 min at RT) fixed Heat Shocked HeLa cells stained with ARG22297 anti-AHA1 antibody (yellow) at 1:60 for 12 hours at 4°C. Counterstain: DAPI (blue) nuclear stain at 1:40000 for 120 min at RT. Magnification: 100x. Left: DAPI (blue) nuclear stain, Middle: Primary antibody, Right: Composite.



ARG22297 anti-AHA1 antibody WB image

Western blot: A431, A549, HCT116, HeLa, HEK293, HepG2, HL-60, HUVEC, Jurkat, MCF7, PC3, T98G, and Rat brain lysates stained with ARG22297 anti-AHA1 antibody at 1:1000 dilution.