

ARG22301 anti-SLC12A1 / NKCC2 antibody

Package: 50 µg
Store at: -20°C

Summary

Product Description	Rabbit Polyclonal antibody recognizes SLC12A1 / NKCC2
Tested Reactivity	Hu, Ms, Rat
Tested Application	IHC-P, WB
Specificity	Detects ~160kDa.
Host	Rabbit
Clonality	Polyclonal
Target Name	SLC12A1 / NKCC2
Species	Rat
Immunogen	Synthetic peptide around aa. 33-55 (N-terminus) of Rat NKCC2
Conjugation	Un-conjugated
Alternate Names	BSC1; potassium; Solute carrier family 12 member 1; Kidney-specific Na-K-Cl symporter; Bumetanide-sensitive sodium-; NKCC2

Application Instructions

Application table	Application	Dilution
	IHC-P	Assay-dependent
	WB	1:1000
Application Note	* The dilutions indicate recommended starting dilutions and the optimal dilutions or concentrations should be determined by the scientist.	

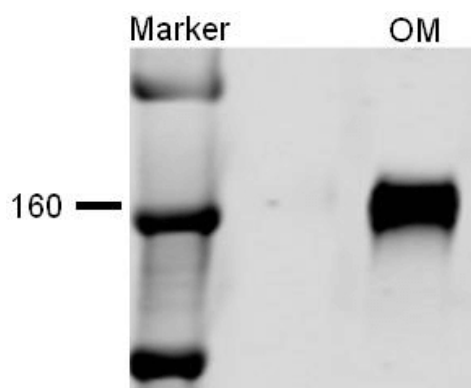
Properties

Form	Liquid
Purification	Purification with Protein A.
Buffer	PBS, 0.09% Sodium azide and 50% Glycerol
Preservative	0.09% Sodium azide
Stabilizer	50% Glycerol
Concentration	1 mg/ml
Storage instruction	For continuous use, store undiluted antibody at 2-8°C for up to a week. For long-term storage, aliquot and store at -20°C. Storage in frost free freezers is not recommended. Avoid repeated freeze/thaw cycles. Suggest spin the vial prior to opening. The antibody solution should be gently mixed before use.
Note	For laboratory research only, not for drug, diagnostic or other use.

Bioinformation

Database links	GeneID: 20495 Mouse GeneID: 6557 Human Swiss-port # P55014 Mouse Swiss-port # Q13621 Human
Gene Symbol	Slc12a1
Gene Full Name	solute carrier family 12 member 1
Background	This gene encodes a kidney-specific sodium-potassium-chloride cotransporter that is expressed on the luminal membrane of renal epithelial cells of the thick ascending limb of Henle's loop and the macula densa. It plays a key role in concentrating urine and accounts for most of the NaCl resorption. It is sensitive to such diuretics as furosemide and bumetanide. Some Bartter-like syndromes result from defects in this gene. Alternative splicing results in multiple transcript variants encoding distinct isoforms. Additional splice variants have been described but their biological validity in humans has not been experimentally proven.[provided by RefSeq, May 2010]
Function	Electrically silent transporter system. Mediates sodium and chloride reabsorption. Plays a vital role in the regulation of ionic balance and cell volume. [UniProt]
Calculated Mw	121 kDa
Cellular Localization	Membrane

Images



ARG22301 anti-SLC12A1 / NKCC2 antibody WB image

Western blot: Rat kidney tissue lysates stained with ARG22301 anti-SLC12A1 / NKCC2 antibody at 1:1000 dilution.