

ARG22342 anti-B Cell Subset antibody [BB6-10A10] (FITC)

Package: 100 µg
Store at: 4°C

Summary

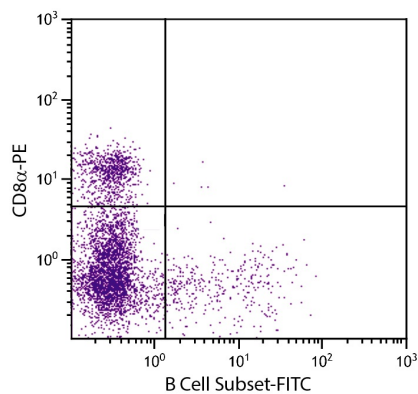
Product Description	FITC-conjugated Mouse Monoclonal antibody [BB6-10A10] recognizes B Cell Subset
Tested Reactivity	Pig
Tested Application	FACS
Specificity	Indeterminate
Host	Mouse
Clonality	Monoclonal
Clone	BB6-10A10
Isotype	IgM, kappa
Target Name	B Cell Subset
Species	Pig
Conjugation	FITC

Application Instructions

Application table	Application	Dilution
	FACS	< 1 ug/10 ⁶ cells
Application Note	* The dilutions indicate recommended starting dilutions and the optimal dilutions or concentrations should be determined by the scientist.	

Properties

Form	Liquid
Buffer	PBS and 0.1% Sodium azide.
Preservative	0.1% Sodium azide
Concentration	0.5 mg/ml
Storage instruction	Aliquot and store in the dark at 2-8°C. Keep protected from prolonged exposure to light. Avoid repeated freeze/thaw cycles. Suggest spin the vial prior to opening. The antibody solution should be gently mixed before use.
Note	For laboratory research only, not for drug, diagnostic or other use.



ARG22342 anti-B Cell Subset antibody [BB6-10A10] (FITC) FACS image

Flow Cytometry: Porcine peripheral blood lymphocytes stained with ARG22342 anti-B Cell Subset antibody [BB6-10A10] (FITC) and ARG21128 anti-CD8a antibody [76-2-11] (PE).