

## ARG22356 anti-SMO / Smoothened Homolog antibody

Package: 50 µg  
Store at: -20°C

### Summary

Product Description	Rabbit Polyclonal antibody recognizes SMO / Smoothened Homolog
Tested Reactivity	Hu
Tested Application	WB
Host	Rabbit
Clonality	Polyclonal
Isotype	IgG
Target Name	SMO / Smoothened Homolog
Species	Human
Immunogen	Synthetic peptide of Human SMO / Smoothened Homolog.
Conjugation	Un-conjugated
Alternate Names	Gx; SMO; Protein Gx; Smoothened homolog; FZD11; SMOH

### Application Instructions

Application table	Application	Dilution
	WB	5 - 10 µg/ml
Application Note	* The dilutions indicate recommended starting dilutions and the optimal dilutions or concentrations should be determined by the scientist.	
Positive Control	Human brain.	

### Properties

Form	Liquid
Purification	Ammonium sulfate precipitation.
Buffer	PBS and 0.08% Sodium azide.
Preservative	0.08% Sodium azide
Storage instruction	For continuous use, store undiluted antibody at 2-8°C for up to a week. For long-term storage, aliquot and store at -20°C or below. Storage in frost free freezers is not recommended. Avoid repeated freeze/thaw cycles. Suggest spin the vial prior to opening. The antibody solution should be gently mixed before use.
Note	For laboratory research only, not for drug, diagnostic or other use.

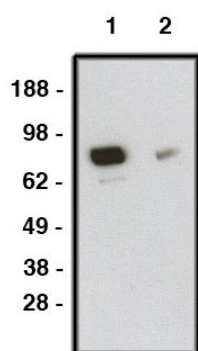
### Bioinformation

Database links	<a href="#">GeneID: 6608 Human</a>
----------------	------------------------------------

Gene Symbol	SMO
Gene Full Name	smoothened, frizzled class receptor
Background	The protein encoded by this gene is a G protein-coupled receptor that interacts with the patched protein, a receptor for hedgehog proteins. The encoded protein transduces signals to other proteins after activation by a hedgehog protein/patched protein complex. [provided by RefSeq, Jul 2010]
Function	G protein-coupled receptor that probably associates with the patched protein (PTCH) to transduce the hedgehog's proteins signal. Binding of sonic hedgehog (SHH) to its receptor patched is thought to prevent normal inhibition by patched of smoothened (SMO). Required for the accumulation of KIF7 and GLI3 in the cilia. [UniProt]
Calculated Mw	86 kDa

## Images

---



ARG22356 anti-SMO / Smoothened Homolog antibody WB image

Western blot: 15 µg of Human brain lysate stained with ARG22356 anti-SMO / Smoothened Homolog antibody at 1) 10 µg/ml, and 2) 5 µg/ml dilution.