

ARG22363 Goat anti-Rat Ig antibody (APC), pre-adsorbed

Package: 100 µg
Store at: 4°C

Summary

Product Description	APC-conjugated Goat Polyclonal antibody recognizes Rat Ig
Tested Reactivity	Rat
Tested Application	FACS, FLISA, ICC/IF, IHC-Fr, WB
Specificity	Reacts with the heavy and light chains of Rat IgM and IgG.
Host	Goat
Clonality	Polyclonal
Isotype	IgG
Target Name	Ig
Species	Rat
Immunogen	Rat Ig
Conjugation	APC

Application Instructions

Pre Adsorbed Pre-adsorbed with Mouse immunoglobulins and pooled sera so the antibody is minimal cross reactivity with Mouse immunoglobulins; may react with immunoglobulins from other species.

Application table

Application	Dilution
FACS	< 0.1 µg/10 ⁶ cells
FLISA	< 1 µg/ml
ICC/IF	Assay-dependent
IHC-Fr	Assay-dependent
WB	Assay-dependent

Application Note * The dilutions indicate recommended starting dilutions and the optimal dilutions or concentrations should be determined by the scientist.

Properties

Form	Liquid
Purification	Affinity purification with immunogen.
Buffer	PBS, 0.1% Sodium azide and Sucrose.
Preservative	0.1% Sodium azide
Stabilizer	Sucrose
Concentration	0.5 mg/ml

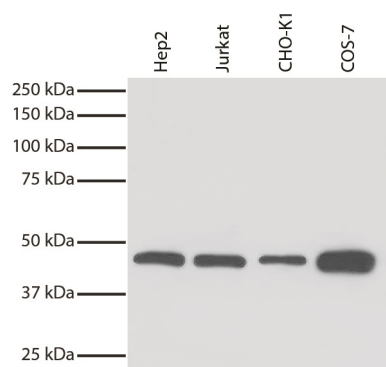
Storage instruction

Aliquot and store in the dark at 2-8°C. Keep protected from prolonged exposure to light. Avoid repeated freeze/thaw cycles. Suggest spin the vial prior to opening. The antibody solution should be gently mixed before use.

Note

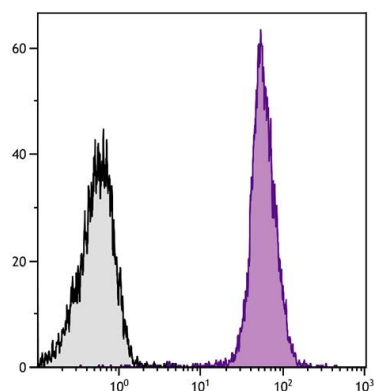
For laboratory research only, not for drug, diagnostic or other use.

Images



ARG22363 Goat anti-Rat Ig antibody (APC), pre-adsorbed WB image

Western blot: Hep2, Jurkat, CHO-K1, and COS-7 cell lysates stained with Rat anti-beta actin antibody. Proteins were visualized using ARG22363 Goat anti-Rat Ig antibody (APC), pre-adsorbed and with chemiluminescent detection.



ARG22363 Goat anti-Rat Ig antibody (APC) (pre-adsorbed) FACS image

Flow Cytometry: BALB/c Mouse splenocytes stained with [ARG20565](#) anti-CD45 antibody [I3/2.3] followed by ARG22363 Goat anti-Rat Ig antibody (APC) (pre-adsorbed).