

ARG22450 anti-Leukotriene B4 Receptor antibody [202/7B1] (FITC)

Package: 50 µg
Store at: 4°C

Summary

| | |
|---------------------|---|
| Product Description | FITC-conjugated Mouse Monoclonal antibody [202/7B1] recognizes Leukotriene B4 Receptor. This antibody recognizes Human leukotriene B4 receptor, also known as BLTR, Chemoattractant receptor-like 1, G-protein coupled receptor 16 or P2Y purinoceptor 7. BLTR is a 353 aa, ~40 kDa multipass transmembrane glycoprotein. BLTR is expressed by peripheral blood granulocytes and is important in the pro-inflammatory response. |
| Tested Reactivity | Hu |
| Tested Application | FACS, IHC-Fr |
| Host | Mouse |
| Clonality | Monoclonal |
| Clone | 202/7B1 |
| Isotype | IgG2a |
| Target Name | Leukotriene B4 Receptor |
| Species | Human |
| Immunogen | HeLa cell transfectants expressing human BLTR. |
| Conjugation | FITC |
| Alternate Names | GPR16; LTB4R1; P2Y purinoceptor 7; BLTR; Chemoattractant receptor-like 1; BLT1; P2Y7; LTB4-R1; LTB4-R 1; G-protein coupled receptor 16; LTB4R1; Leukotriene B4 receptor 1; CMKRL1; P2RY7 |

Application Instructions

| | | |
|-------------------|---|-----------------|
| Application table | Application | Dilution |
| | FACS | Neat |
| | IHC-Fr | Assay-dependent |
| Application Note | FACS: Use 10ul of the suggested working dilution to label 10 ⁶ cells or 100ul whole blood. * The dilutions indicate recommended starting dilutions and the optimal dilutions or concentrations should be determined by the scientist. | |

Properties

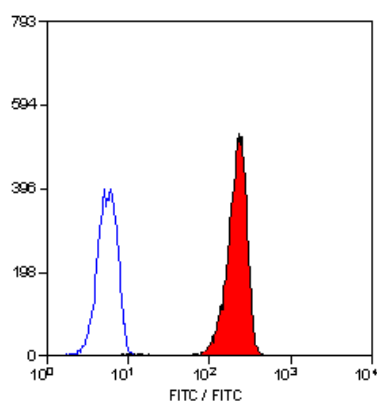
| | |
|---------------|---------------------------------------|
| Form | Liquid |
| Purification | Purification with Protein G. |
| Buffer | PBS, 0.09% Sodium azide and 1.0% BSA. |
| Preservative | 0.09% Sodium azide |
| Stabilizer | 1.0% BSA |
| Concentration | 0.1 mg/ml |

| | |
|---------------------|--|
| Storage instruction | Aliquot and store in the dark at 2-8°C. Keep protected from prolonged exposure to light. Avoid repeated freeze/thaw cycles. Suggest spin the vial prior to opening. The antibody solution should be gently mixed before use. |
| Note | For laboratory research only, not for drug, diagnostic or other use. |

Bioinformation

| | |
|----------------|---|
| Gene Symbol | LTB4R |
| Gene Full Name | leukotriene B4 receptor |
| Function | Receptor for extracellular ATP > UTP and ADP. The activity of this receptor is mediated by G proteins which activate a phosphatidylinositol-calcium second messenger system. May be the cardiac P2Y receptor involved in the regulation of cardiac muscle contraction through modulation of L-type calcium currents. Is a receptor for leukotriene B4, a potent chemoattractant involved in inflammation and immune response. [UniProt] |
| Calculated Mw | 38 kDa |
| PTM | Phosphorylated by GRK6 upon leukotriene B4 binding; which promotes desensitization. |

Images



ARG22450 anti-Leukotriene B4 Receptor antibody [202/7B1] (FITC)
FACS image

Flow Cytometry: Human peripheral blood granulocytes stained with ARG22450 anti-Leukotriene B4 Receptor antibody [202/7B1] (FITC).