

## ARG22532 anti-Leukotriene B4 Receptor antibody [202/7B1]

Package: 100 µg

Store at: -20°C

### Summary

Product Description	Mouse Monoclonal antibody [202/7B1] recognizes Leukotriene B4 Receptor This antibody recognizes Human leukotriene B4 receptor, also known as BLTR, Chemoattractant receptor-like 1, G-protein coupled receptor 16 or P2Y purinoceptor 7. BLTR is a 353 aa, ~40 kDa multipass transmembrane glycoprotein. BLTR is expressed by peripheral blood granulocytes and is important in the pro-inflammatory response.
Tested Reactivity	Hu
Tested Application	FACS, ICC/IF, IHC-Fr
Host	Mouse
Clonality	Monoclonal
Clone	202/7B1
Isotype	IgG2a
Target Name	Leukotriene B4 Receptor
Species	Human
Immunogen	HeLa cell transfectants expressing human BLTR.
Conjugation	Un-conjugated
Alternate Names	GPR16; LTB4R1; P2Y purinoceptor 7; BLTR; Chemoattractant receptor-like 1; BLT1; P2Y7; LTB4-R1; LTB4-R 1; G-protein coupled receptor 16; LTBR1; Leukotriene B4 receptor 1; CMKRL1; P2RY7

### Application Instructions

Application table	Application	Dilution
	FACS	Neat
	ICC/IF	
	IHC-Fr	Assay-dependent
Application Note	FACS: Use 10ul of the suggested working dilution to label 10 <sup>6</sup> cells or 100ul whole blood. * The dilutions indicate recommended starting dilutions and the optimal dilutions or concentrations should be determined by the scientist.	

### Properties

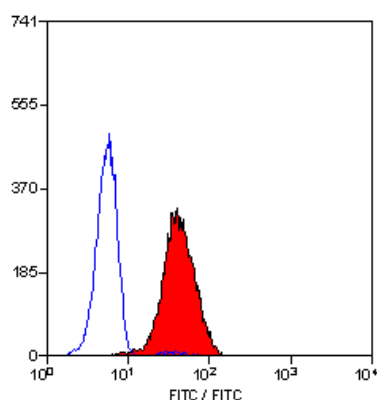
Form	Liquid
Purification	Purification with Protein G.
Buffer	PBS and 0.09% Sodium azide.
Preservative	0.09% Sodium azide
Concentration	1 mg/ml

Storage instruction	For continuous use, store undiluted antibody at 2-8°C for up to a week. For long-term storage, aliquot and store at -20°C or below. Storage in frost free freezers is not recommended. Avoid repeated freeze/thaw cycles. Suggest spin the vial prior to opening. The antibody solution should be gently mixed before use.
Note	For laboratory research only, not for drug, diagnostic or other use.

## Bioinformation

Gene Symbol	LTB4R
Gene Full Name	leukotriene B4 receptor
Function	Receptor for extracellular ATP > UTP and ADP. The activity of this receptor is mediated by G proteins which activate a phosphatidylinositol-calcium second messenger system. May be the cardiac P2Y receptor involved in the regulation of cardiac muscle contraction through modulation of L-type calcium currents. Is a receptor for leukotriene B4, a potent chemoattractant involved in inflammation and immune response. [UniProt]
Calculated Mw	38 kDa
PTM	Phosphorylated by GRK6 upon leukotriene B4 binding; which promotes desensitization.

## Images



ARG22532 anti-Leukotriene B4 Receptor antibody [202/7B1] FACS image

Flow Cytometry: Human peripheral blood monocytes stained with ARG22532 anti-Leukotriene B4 Receptor antibody [202/7B1].