

ARG22593 anti-Siglec 5 + Siglec 14 antibody [1A5] (FITC)

Package: 50 µg
Store at: 4°C

Summary

Product Description	FITC-conjugated Mouse Monoclonal antibody [1A5] recognizes Siglec 5 + Siglec 14
Tested Reactivity	Hu, Chimp
Tested Application	FACS
Host	Mouse
Clonality	Monoclonal
Clone	1A5
Isotype	IgG1
Target Name	Siglec 5 + Siglec 14
Species	Human
Immunogen	Siglec-5-Fc protein, consisting of the full-length extracellular region of human Siglec-5, fused with the Fc region of human IgG1.
Conjugation	FITC
Alternate Names	Sialic acid-binding Ig-like lectin 14; Siglec-14

Application Instructions

Application table	Application	Dilution
	FACS	1:25 - 1:200
Application Note	<p>FACS: Use 10ul of the suggested working dilution to label 10⁶ cells.</p> <p>* The dilutions indicate recommended starting dilutions and the optimal dilutions or concentrations should be determined by the scientist.</p>	

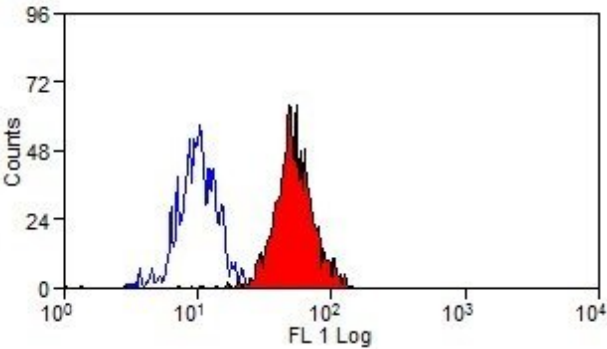
Properties

Form	Liquid
Purification	Purification with Protein G.
Buffer	PBS, 0.09% Sodium azide and 1% BSA.
Preservative	0.09% Sodium azide
Stabilizer	1% BSA
Concentration	0.1 mg/ml
Storage instruction	Aliquot and store in the dark at 2-8°C. Keep protected from prolonged exposure to light. Avoid repeated freeze/thaw cycles. Suggest spin the vial prior to opening. The antibody solution should be gently mixed before use.
Note	For laboratory research only, not for drug, diagnostic or other use.

Bioinformation

Gene Symbol	SIGLEC14
Gene Full Name	sialic acid binding Ig-like lectin 14
Function	Putative adhesion molecule. Sialic acid-binding paired receptor which may activate associated receptors. [UniProt]
Calculated Mw	44 kDa

Images



ARG22593 anti-Siglec 5 + Siglec 14 antibody [1A5] (FITC) FACS image

Flow Cytometry: Human peripheral blood monocytes stained with ARG22593 anti-Siglec 5 + Siglec 14 antibody [1A5] (FITC).