

ARG22630 anti-Hexanoyl-Lysine adduct / HEL antibody [5D9]

Package: 50 µg
Store at: -20°C

Summary

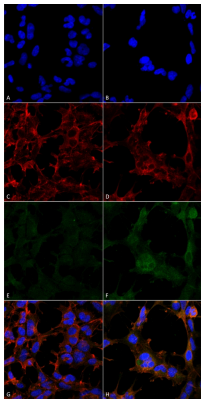
| | |
|---------------------|--|
| Product Description | Mouse Monoclonal antibody [5D9] recognizes Hexanoyl-Lysine adduct / HEL |
| Tested Reactivity | Other |
| Tested Application | ICC/IF, WB |
| Specificity | Specific for Hexanoyl-Lysine adduct (HEL) modified peptides and proteins. Does not detect free Hexanoyl-Lysine. Does not cross-react with Acrolein, Crotonaldehyde or 4-Hydroxy-2-hexenal. |
| Host | Mouse |
| Clonality | Monoclonal |
| Clone | 5D9 |
| Isotype | IgG1 |
| Target Name | Hexanoyl-Lysine adduct / HEL |
| Species | Others |
| Immunogen | Synthetic Hexanoyl modified KLH. |
| Conjugation | Un-conjugated |

Application Instructions

| Application table | Application | Dilution |
|-------------------|--|----------|
| | ICC/IF | 1:50 |
| | WB | 1:1000 |
| Application Note | * The dilutions indicate recommended starting dilutions and the optimal dilutions or concentrations should be determined by the scientist. | |

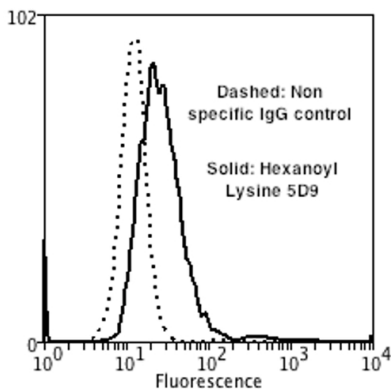
Properties

| | |
|---------------------|---|
| Form | Liquid |
| Purification | Purification with Protein G. |
| Buffer | PBS (pH 7.4), 0.9% Sodium azide and 50% Glycerol. |
| Preservative | 0.9% Sodium azide |
| Stabilizer | 50% Glycerol |
| Storage instruction | For continuous use, store undiluted antibody at 2-8°C for up to a week. For long-term storage, aliquot and store at -20°C. Storage in frost free freezers is not recommended. Avoid repeated freeze/thaw cycles. Suggest spin the vial prior to opening. The antibody solution should be gently mixed before use. |
| Note | For laboratory research only, not for drug, diagnostic or other use. |



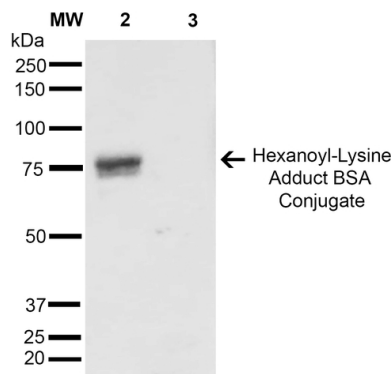
ARG22630 anti-Hexanoyl-Lysine adduct / HEL antibody [5D9] ICC/IF image

Immunofluorescence: 5% Formaldehyde fixed (5 min) HEK293 cells stained with ARG22630 anti-Hexanoyl-Lysine adduct / HEL antibody [5D9] at 1:50 for 30 - 60 min at RT. Secondary Antibody: Goat anti-Mouse (Alexa Fluor 488) at 1:1500 for 30 - 60 min at RT. Counterstain: Phalloidin Alexa Fluor 633 F-Actin stain; DAPI (blue) nuclear stain. (A,C,E,G) Untreated. (B,D,F,H) Cells cultured overnight with 50 μ M H₂O₂. (A,B) DAPI (blue) nuclear stain. (C,D) Phalloidin Alex Fluor 633 F-Actin stain. (E,F) Primary antibody. (G,H) Composite. .



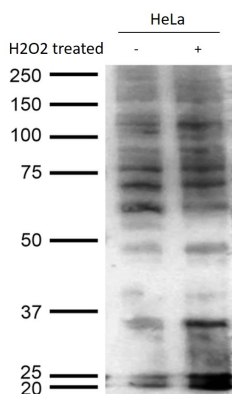
ARG22630 anti-Hexanoyl-Lysine adduct / HEL antibody [5D9] FACS image

Flow Cytometry: 90% Methanol fixed Neuroblastoma cells (SH-SY5Y) stained with ARG22630 anti-Hexanoyl-Lysine adduct / HEL antibody [5D9] at 1:50 for 30 min on ice. Secondary Antibody: Goat anti-Mouse (PE) at 1:100 for 20 min at RT. Cells were subject to oxidative stress by treating with 250 μ M H₂O₂ for 24 hours. Dashed line: Non specific IgG control. Solid line: Primary antibodies.



ARG22630 anti-Hexanoyl-Lysine adduct / HEL antibody [5D9] WB image

Western blot: 0.5 μ g of Hexanoyl Lysine-BSA and BSA stained with ARG22630 anti-Hexanoyl-Lysine adduct / HEL antibody [5D9] at 1:1000 for 2 hours at RT.



ARG22630 anti-Hexanoyl-Lysine adduct / HEL antibody [5D9] WB image

Western blot: 12 μ g of HeLa and H₂O₂ treated HeLa cell lysate stained with ARG22630 anti-Hexanoyl-Lysine adduct / HEL antibody [5D9] at 1:1000 for 2 hours at RT.