

ARG22667 anti-Aspergillus antibody [WF-AF-1]

Package: 125 µg
Store at: -20°C

Summary

Product Description	<p>Mouse Monoclonal antibody [WF-AF-1] recognizes Aspergillus SPP</p> <p>This antibody recognizes wall fraction (WF) of Aspergillus fumigatus. This antibody specifically recognises members of the Aspergillus spp. including A. flavus and A. niger, reacting strongly with walls and septae, and to a lesser extent within the cytoplasm of hyphae.</p> <p>A. fumigatus, a thermophilic, opportunistic and angio-invasive filamentous fungus, is the main causative agent of systemic Bovine aspergillosis, a worldwide and often fatal respiratory disease of cattle. Clone WF-AF-1 has been successfully used in immunohistochemistry for the specific and consistent in situ diagnosis of Bovine systemic aspergillosis, attributed to its binding to the major cell wall component, galactomannan. Clone WF-AF-1 has also been used for the identification of aspergillosis in Human tissue sections.</p> <p>Clone WF-AF-1 does not bind to water-soluble somatic antigens (WSSA) of Aspergillus spp., but may react with galactomannans of members of the genus Penicillium.</p>
Tested Reactivity	Fungi
Tested Application	IHC-P, WB
Host	Mouse
Clonality	Monoclonal
Clone	WF-AF-1
Isotype	IgM
Target Name	Aspergillus
Species	Fungi
Immunogen	Wall fraction (WF) of Aspergillus fumigatus
Conjugation	Un-conjugated

Application Instructions

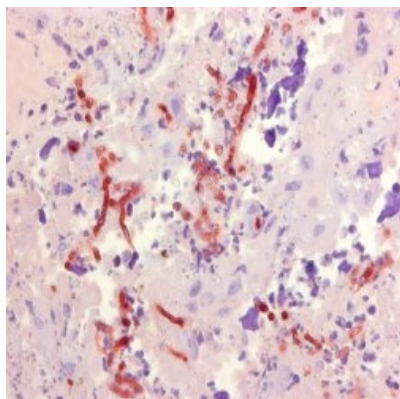
Application table	Application	Dilution
	IHC-P	1:300
	WB	Assay-dependent
Application Note	<p>WB: This antibody detects a band of approximately 106 kDa of Aspergillus fumigatus wall fraction (WF).</p> <p>* The dilutions indicate recommended starting dilutions and the optimal dilutions or concentrations should be determined by the scientist.</p>	

Properties

Form	Liquid
Purification	Prepared by ammonium sulfate.
Buffer	PBS and 0.09% Sodium azide.
Preservative	0.09% Sodium azide

Concentration	1 mg/ml
Storage instruction	For continuous use, store undiluted antibody at 2-8°C for up to a week. For long-term storage, aliquot and store at -20°C or below. Storage in frost free freezers is not recommended. Avoid repeated freeze/thaw cycles. Suggest spin the vial prior to opening. The antibody solution should be gently mixed before use.
Note	For laboratory research only, not for drug, diagnostic or other use.

Images



ARG22667 anti-Aspergillus SPP antibody [WF-AF-1] IHC-P image

Immunohistochemistry: Paraffin-embedded Human Placental tissue presenting aspergillosis stained with ARG22667 anti-Aspergillus SPP antibody [WF-AF-1].