

ARG22692 anti-NPY1R antibody

Package: 500 µl
Store at: -20°C

Summary

Product Description	Sheep Polyclonal antibody recognizes NPY1R This antibody recognizes Human neuropeptide Y receptor 1. Neuropeptide Y receptors are a class of G-protein coupled receptors which are activated by the closely related peptide hormones neuropeptide Y, peptide YY and pancreatic polypeptide. These receptors are involved in control of a diverse set of behavioral processes including appetite, circadian rhythm, and anxiety.
Tested Reactivity	Hu, Rat
Tested Application	ELISA, IHC-P, WB
Host	Sheep
Clonality	Polyclonal
Isotype	IgG
Target Name	NPY1R
Species	Human
Immunogen	KLH-conjugated synthetic peptide around aa. 365 - 378 of Human NPY1R. (KQASPVAFKKINNN)
Conjugation	Un-conjugated
Alternate Names	NPYR; Neuropeptide Y receptor type 1; NPY1-R

Application Instructions

Application table	Application	Dilution
	ELISA	Assay-dependent
	IHC-P	Assay-dependent
	WB	1:100 - 1:1000
Application Note	WB: This antibody detects a band of approximately 55 kDa in human brain. IHC-P: Antigen Retrieval: Boil tissue section in Sodium citrate buffer (pH 6.0) * The dilutions indicate recommended starting dilutions and the optimal dilutions or concentrations should be determined by the scientist.	

Properties

Form	Liquid
Purification	Purification with Protein G.
Buffer	PBS and 0.09% Sodium azide.
Preservative	0.09% Sodium azide
Concentration	5 mg/ml
Storage instruction	For continuous use, store undiluted antibody at 2-8°C for up to a week. For long-term storage, aliquot and store at -20°C or below. Storage in frost free freezers is not recommended. Avoid repeated

freeze/thaw cycles. Suggest spin the vial prior to opening. The antibody solution should be gently mixed before use.

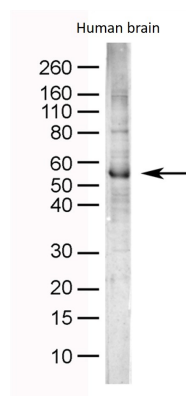
Note

For laboratory research only, not for drug, diagnostic or other use.

Bioinformation

Gene Symbol	NPY1R
Gene Full Name	neuropeptide Y receptor Y1
Background	This gene belongs to the G-protein-coupled receptor superfamily. The encoded transmembrane protein mediates the function of neuropeptide Y (NPY), a neurotransmitter, and peptide YY (PYY), a gastrointestinal hormone. The encoded receptor undergoes fast agonist-induced internalization through clathrin-coated pits and is subsequently recycled back to the cell membrane. Activation of Y1 receptors may result in mobilization of intracellular calcium and inhibition of adenylate cyclase activity. [provided by RefSeq, Aug 2013]
Function	Receptor for neuropeptide Y and peptide YY. The rank order of affinity of this receptor for pancreatic polypeptides is NPY > [Pro-34] PYY, PYY and [Leu-31, Pro-34] NPY > NPY (2-36) > [Ile-31, Gln-34] PP and PYY (3-36) > PP > NPY free acid. [UniProt]
Calculated Mw	44 kDa

Images



ARG22692 anti-NPY1R antibody WB image

Western blot: Human brain lysate stained with ARG22692 anti-NPY1R antibody.