

ARG22704 anti-Laminin antibody

Package: 100 µl
Store at: -20°C

Summary

Product Description	Rabbit Polyclonal antibody recognizes Laminin This antibody recognizes both A (400kD) and B (220kD) chains of laminin.
Tested Reactivity	Hu, Ms, Bird, Chk, Dog, Duck, Pig, Rb
Tested Application	ELISA, ICC/IF, IHC-Fr, IHC-P
Host	Rabbit
Clonality	Polyclonal
Isotype	IgG
Target Name	Laminin
Species	Mouse
Immunogen	Purified laminin from Engelbreth-Holm-Swarm (EHS).
Conjugation	Un-conjugated
Alternate Names	LAMA1: S-LAM-alpha; LAMA; Laminin-1 subunit alpha; PTBHS; Laminin-3 subunit alpha; S-LAM alpha; S-laminin subunit alpha; Laminin A chain; Laminin subunit alpha-1 LAMA2: Laminin-12 subunit alpha; Laminin-2 subunit alpha; Laminin-4 subunit alpha; Merosin heavy chain; Laminin M chain; LAMM; Laminin subunit alpha-2 LAMB1: Laminin-1 subunit beta; CLM; Laminin-8 subunit beta; Laminin-10 subunit beta; Laminin B1 chain; Laminin-12 subunit beta; LIS5; Laminin-2 subunit beta; Laminin-6 subunit beta; Laminin subunit beta-1 LAMB2: Laminin-3 subunit beta; S-laminin subunit beta; Laminin B1s chain; S-LAM beta; Laminin-4 subunit beta; LAMS; NPHS5; Laminin-14 subunit beta; Laminin-15 subunit beta; Laminin-9 subunit beta; Laminin-11 subunit beta; Laminin-7 subunit beta; Laminin subunit beta-2

Application Instructions

Application table	Application	Dilution
	ELISA	> 1:1000
	ICC/IF	Assay-dependent
	IHC-Fr	1:200 - 1:1000
	IHC-P	Assay-dependent
Application Note	* The dilutions indicate recommended starting dilutions and the optimal dilutions or concentrations should be determined by the scientist.	

Properties

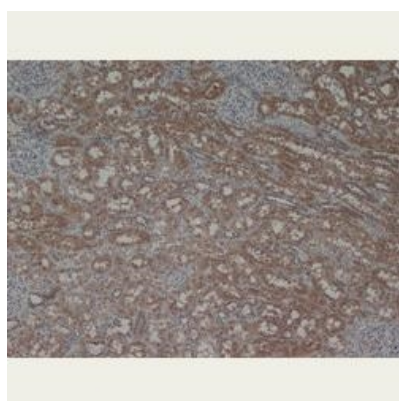
Form	Liquid
------	--------

Purification	Affinity purification with immunogen.
Buffer	Serum and 0.09% Sodium azide.
Preservative	0.09% Sodium azide
Storage instruction	For continuous use, store undiluted antibody at 2-8°C for up to a week. For long-term storage, aliquot and store at -20°C or below. Storage in frost free freezers is not recommended. Avoid repeated freeze/thaw cycles. Suggest spin the vial prior to opening. The antibody solution should be gently mixed before use.
Note	For laboratory research only, not for drug, diagnostic or other use.

Bioinformation

Gene Symbol	LAMA1; LAMA2; LAMB1; LAMB2
Gene Full Name	laminin, alpha 1; laminin, alpha 2; laminin, beta 1; laminin, beta 2 (laminin S)
Background	LAMA1: This gene encodes one of the alpha 1 subunits of laminin. The laminins are a family of extracellular matrix glycoproteins that have a heterotrimeric structure consisting of an alpha, beta and gamma chain. These proteins make up a major component of the basement membrane and have been implicated in a wide variety of biological processes including cell adhesion, differentiation, migration, signaling, neurite outgrowth and metastasis. Mutations in this gene may be associated with Poretti-Boltshauser syndrome. [provided by RefSeq, Sep 2014]
Function	LAMA1: Binding to cells via a high affinity receptor, laminin is thought to mediate the attachment, migration and organization of cells into tissues during embryonic development by interacting with other extracellular matrix components. [UniProt]
PTM	LAMA1: Tyrosine phosphorylated by PKDCC/VLK.
Cellular Localization	LAMA1, LAMA2 and LAMB1: Secreted, extracellular space, extracellular matrix, basement membrane. Note=Major component. [UniProt] LAMB2: Secreted, extracellular space, extracellular matrix, basement membrane. Note=S-laminin is concentrated in the synaptic cleft of the neuromuscular junction. [UniProt]

Images



ARG22704 anti-Laminin antibody IHC-P image

Immunohistochemistry: Formalin-fixed and paraffin-embedded Human kidney stained with ARG22704 anti-Laminin antibody.