

## ARG22727 anti-CD8b antibody [CA15.4G2]

Package: 1 ml  
Store at: -20°C

### Summary

Product Description	Mouse Monoclonal antibody [CA15.4G2] recognizes CD8b This antibody recognizes Canine CD8 $\beta$ cell surface antigen, expressed by cytotoxic\suppressor T lymphocytes that interact with MHC Class I expressing targets.
Tested Reactivity	Dog
Tested Application	FACS, IHC-Fr, IP
Host	Mouse
Clonality	Monoclonal
Clone	CA15.4G2
Isotype	IgG1
Target Name	CD8b
Species	Dog
Conjugation	Un-conjugated
Alternate Names	LY3; CD8B1; CD antigen CD8b; LEU2; T-cell surface glycoprotein CD8 beta chain; P37; LYT3

### Application Instructions

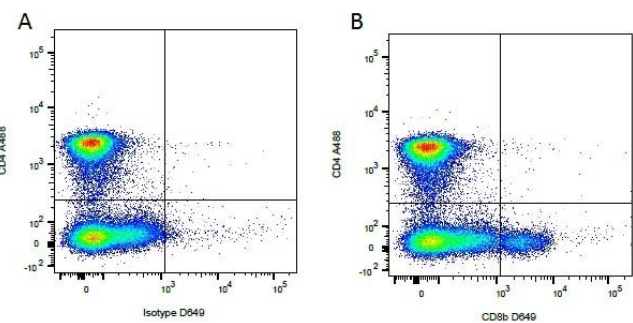
Application table	Application	Dilution
	FACS	Neat
	IHC-Fr	1:10
	IP	Assay-dependent
Application Note	FACS: Use 20 $\mu$ l of the suggested working dilution to label 10 <sup>6</sup> cells or 100 $\mu$ l whole blood. * The dilutions indicate recommended starting dilutions and the optimal dilutions or concentrations should be determined by the scientist.	

### Properties

Form	Liquid
Purification	Unpurified.
Buffer	PBS and 0.09% Sodium azide.
Preservative	0.09% Sodium azide
Storage instruction	For continuous use, store undiluted antibody at 2-8°C for up to a week. For long-term storage, aliquot and store at -20°C or below. Storage in frost free freezers is not recommended. Avoid repeated freeze/thaw cycles. Suggest spin the vial prior to opening. The antibody solution should be gently mixed before use.
Note	For laboratory research only, not for drug, diagnostic or other use.

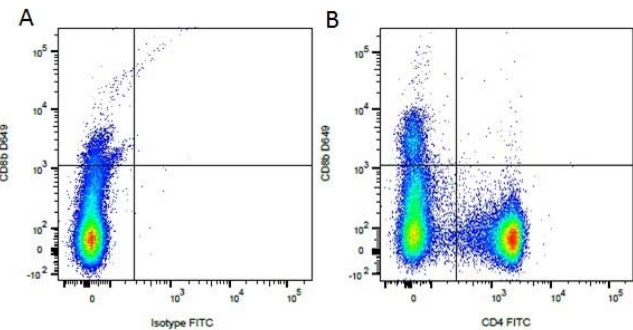
Gene Symbol	CD8B
Gene Full Name	CD8b molecule
Background	The CD8 antigen is a cell surface glycoprotein found on most cytotoxic T lymphocytes that mediates efficient cell-cell interactions within the immune system. The CD8 antigen, acting as a coreceptor, and the T-cell receptor on the T lymphocyte recognize antigens displayed by an antigen presenting cell (APC) in the context of class I MHC molecules. The functional coreceptor is either a homodimer composed of two alpha chains, or a heterodimer composed of one alpha and one beta chain. Both alpha and beta chains share significant homology to immunoglobulin variable light chains. This gene encodes the CD8 beta chain isoforms. Multiple alternatively spliced transcript variants encoding distinct membrane associated or secreted isoforms have been described. A pseudogene, also located on chromosome 2, has been identified. [provided by RefSeq, May 2010]
Function	Identifies cytotoxic/suppressor T-cells that interact with MHC class I bearing targets. CD8 is thought to play a role in the process of T-cell mediated killing. [UniProt]
Highlight	Related products: <a href="#">CD8 antibodies</a> ; <a href="#">CD8 ELISA Kits</a> ; <a href="#">CD8 Duos / Panels</a> ; <a href="#">Anti-Mouse IgG secondary antibodies</a> ; Related news: <a href="#">New antibody panels and duos for Tumor immune microenvironment</a> <a href="#">Tumor-Infiltrating Lymphocytes (TILs)</a>
Calculated Mw	24 kDa
PTM	Phosphorylated as a consequence of T-cell activation.

Images



ARG22727 anti-CD8b antibody [CA15.4G2] FACS image

Flow Cytometry: Figure A. anti-Canine CD4 (A488) and Mouse IgG1 isotype control detected with Goat anti-Mouse IgG1 DyLight 649. Figure B. anti-Canine CD4 (A488) and ARG22727 anti-CD8b antibody [CA15.4G2] detected with Goat anti-Mouse IgG1 (DyLight 649). All experiments performed on red cell lysed Canine blood gated on mononuclear cells.



ARG22727 anti-CD8b antibody [CA15.4G2] FACS image

Flow Cytometry: Figure A. ARG22727 anti-CD8b antibody [CA15.4G2] detected with Goat anti-Mouse IgG1 (DyLight 649) and Rat IgG2b isotype control (FITC). Figure B. ARG22727 anti-CD8b antibody [CA15.4G2] detected with Goat anti-Mouse IgG1 (DyLight 649) and anti-Canine CD4 (FITC). All experiments performed on red cell lysed Canine blood gated on mononuclear cells.