

ARG22728 anti-CD11d antibody [CA11.8H2]

Package: 100 µg
Store at: -20°C

Summary

Product Description	<p>Mouse Monoclonal antibody [CA11.8H2] recognizes CD11d</p> <p>This antibody recognizes Canine CD11d cell surface antigen, also known as integrin alpha d subunit. The alpha d integrin (CD11d) subunit is expressed as a heterodimer with beta 2 integrin (CD18). CD11d is expressed by a sub-population of macrophages, some CD8 positive T cells and by gamma/delta T cells in the splenic red pulp.</p> <p>Over expression of CD11d is noted in histiocytic disorders including hemophagocytic sarcoma, described as a proliferative disorder specifically of CD11+ macrophages (Moore. et al. 2006) with macrophages demonstrating marked erythrocytic phagocytosis. Previously, Canine histiocytic sarcoma were described as originating entirely from interstitial dendritic cells. Cells from animals with Canine hepatosplenic T cell lymphoma (HTSL) strongly express CD11d on malignant cells. Dogs normally demonstrate strong positivity for CD11d on large granular lymphocytes, macrophages and T cells in the splenic red pulp. CD11+ γ/δ T cells constitute ~30% red pulp T cells despite their rarity in peripheral blood, suggesting a splenic red pulp origin of HTSL (Fry et al. 2003).</p>
Tested Reactivity	Dog
Tested Application	FACS, IHC-Fr, IP
Host	Mouse
Clonality	Monoclonal
Clone	CA11.8H2
Isotype	IgG1
Target Name	CD11d
Species	Dog
Immunogen	Affinity purified CD11 antigen from canine spleen.
Conjugation	Un-conjugated
Alternate Names	Integrin alpha-D; CD11 antigen-like family member D; ADB2; Leukointegrin alpha D; CD11D; CD antigen CD11d

Application Instructions

Application table	Application	Dilution
	FACS	1:50 - 1:200
	IHC-Fr	Assay-dependent
	IP	Assay-dependent
Application Note	<p>FACS: Use 10 µl of the suggested working dilution to label 10⁶ cells or 100 µl whole blood.</p> <p>* The dilutions indicate recommended starting dilutions and the optimal dilutions or concentrations should be determined by the scientist.</p>	

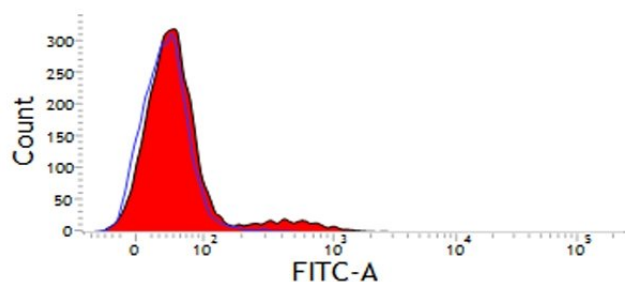
Properties

Form	Liquid
Purification	Purification with Protein A.
Buffer	PBS and 0.09% Sodium azide.
Preservative	0.09% Sodium azide
Concentration	1 mg/ml
Storage instruction	For continuous use, store undiluted antibody at 2-8°C for up to a week. For long-term storage, aliquot and store at -20°C or below. Storage in frost free freezers is not recommended. Avoid repeated freeze/thaw cycles. Suggest spin the vial prior to opening. The antibody solution should be gently mixed before use.
Note	For laboratory research only, not for drug, diagnostic or other use.

Bioinformation

Gene Symbol	ITGAD
Gene Full Name	integrin, alpha D
Function	Integrin alpha-D/beta-2 is a receptor for ICAM3 and VCAM1. May play a role in the atherosclerotic process such as clearing lipoproteins from plaques and in phagocytosis of blood-borne pathogens, particulate matter, and senescent erythrocytes from the blood. [UniProt]
Calculated Mw	127 kDa

Images



ARG22728 anti-CD11d antibody [CA11.8H2] FACS image

Flow Cytometry: Canine peripheral blood lymphocytes stained with ARG22728 anti-CD11d antibody [CA11.8H2] followed by Goat anti-Mouse IgG (H/L) (FITC).