

ARG22737 anti-CD1w2 antibody [CC20] (PE)

Package: 50 tests
Store at: 4°C

Summary

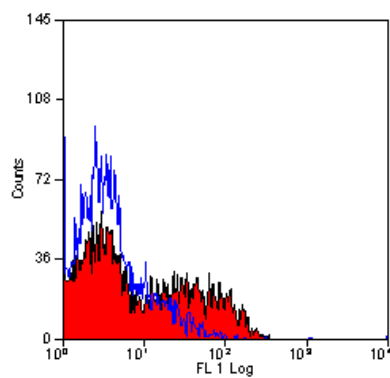
Product Description	PE-conjugated Mouse Monoclonal antibody [CC20] recognizes CD1w2 This antibody recognizes Bovine CD1w2 cell surface antigen, a glycoprotein heterodimer of 12kD and 46kD. CD1w2 is expressed by dendritic cells, cortical thymocytes and a minority of medullary thymocytes, with a pattern similar to antibodies of the CD1b cluster in Humans.
Tested Reactivity	Bov, Cat, Dog, Goat, Hrs, Sheep
Tested Application	FACS
Host	Mouse
Clonality	Monoclonal
Clone	CC20
Isotype	IgG2a
Target Name	CD1w2
Species	Bovine
Conjugation	PE

Application Instructions

Application table	Application	Dilution
	FACS	Neat - 1:5
Application Note	FACS: Use 10 µl of the suggested working dilution to label 10 ⁶ cells in 100 µl. * The dilutions indicate recommended starting dilutions and the optimal dilutions or concentrations should be determined by the scientist.	

Properties

Form	Liquid
Purification	Purification with Protein G.
Buffer	PBS, 0.09% Sodium azide, 1% BSA and 5% Sucrose.
Preservative	0.09% Sodium azide
Stabilizer	1% BSA and 5% Sucrose
Storage instruction	Aliquot and store in the dark at 2-8°C. Keep protected from prolonged exposure to light. Avoid repeated freeze/thaw cycles. Suggest spin the vial prior to opening. The antibody solution should be gently mixed before use.
Note	For laboratory research only, not for drug, diagnostic or other use.



ARG22737 anti-CD1w2 antibody [CC20] (PE) FACS image

Flow Cytometry: Bovine peripheral blood lymphocytes stained with ARG22737 anti-CD1w2 antibody [CC20] (PE).