

ARG22742 anti-CD41 + CD61 antibody [11C3] (FITC)

Package: 100 µg
Store at: 4°C

Summary

Product Description	FITC-conjugated Mouse Monoclonal antibody [11C3] recognizes CD41 + CD61 This antibody recognizes Chicken integrin CD41/61, also known as GPIIb-IIIa. CD41/61 is a heterodimeric cell surface protein that is expressed on Chicken thrombocytes and cells of the thrombocyte lineage. Avian thrombocytes are nucleated equivalents of mammalian platelets that play a role in coagulation and phagocytosis. Mouse anti Chicken CD41/61 clone 11C3 is reported to induce thrombocyte activation (Lacoste-Eleau et al. 1994).
Tested Reactivity	Chk
Tested Application	FACS
Host	Mouse
Clonality	Monoclonal
Clone	11C3
Isotype	IgG1
Target Name	CD41 + CD61
Species	Chicken
Immunogen	Peripheral blood leukocytes from white leghorn chicken
Conjugation	FITC
Alternate Names	GTA; GT; GPalpha IIb; PPP1R93; CD41; BDPLT2; BDPLT16; GP2B; Integrin alpha-IIb; GPIIb; Platelet membrane glycoprotein IIb; HPA3; CD antigen CD41; CD41B

Application Instructions

Application table	<table> <tr> <th>Application</th><th>Dilution</th></tr> <tr> <td>FACS</td><td>Neat - 1:2</td></tr> </table>	Application	Dilution	FACS	Neat - 1:2
Application	Dilution				
FACS	Neat - 1:2				
Application Note	FACS: Use 10 µl of the suggested working dilution to label 10 ⁶ cells in 100 µl. * The dilutions indicate recommended starting dilutions and the optimal dilutions or concentrations should be determined by the scientist.				

Properties

Form	Liquid
Purification	Purification with Protein G.
Buffer	PBS, 0.09% Sodium azide and 1% BSA.
Preservative	0.09% Sodium azide
Stabilizer	1% BSA
Concentration	0.1 mg/ml
Storage instruction	Aliquot and store in the dark at 2-8°C. Keep protected from prolonged exposure to light. Avoid

repeated freeze/thaw cycles. Suggest spin the vial prior to opening. The antibody solution should be gently mixed before use.

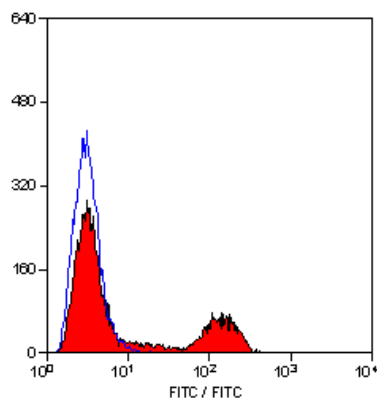
Note

For laboratory research only, not for drug, diagnostic or other use.

Bioinformation

Gene Symbol	ITGA2B
Gene Full Name	integrin, alpha 2b (platelet glycoprotein IIb of IIb/IIIa complex, antigen CD41)
Background	ITGA2B encodes integrin alpha chain 2b. Integrins are heterodimeric integral membrane proteins composed of an alpha chain and a beta chain. Alpha chain 2b undergoes post-translational cleavage to yield disulfide-linked light and heavy chains that join with beta 3 to form a fibronectin receptor expressed in platelets that plays a crucial role in coagulation. Mutations that interfere with this role result in thrombasthenia. In addition to adhesion, integrins are known to participate in cell-surface mediated signalling. [provided by RefSeq, Jul 2008]
Function	Integrin alpha-IIb/beta-3 is a receptor for fibronectin, fibrinogen, plasminogen, prothrombin, thrombospondin and vitronectin. It recognizes the sequence R-G-D in a wide array of ligands. It recognizes the sequence H-H-L-G-G-G-A-K-Q-A-G-D-V in fibrinogen gamma chain. Following activation integrin alpha-IIb/beta-3 brings about platelet/platelet interaction through binding of soluble fibrinogen. This step leads to rapid platelet aggregation which physically plugs ruptured endothelial cell surface. [UniProt]
Calculated Mw	113 kDa

Images



ARG22742 anti-CD41 + CD61 antibody [11C3] (FITC) FACS image

Flow Cytometry: Chicken peripheral blood cells stained with ARG22742 anti-CD41 + CD61 antibody [11C3] (FITC).