

ARG22775 anti-HLA DP + DQ + DR antibody [WR18] (FITC)

Package: 50 µg
Store at: 4°C

Summary

Product Description	FITC-conjugated Mouse Monoclonal antibody [WR18] recognizes HLA DP + DQ + DR This antibody recognizes HLA DP, DQ and DR beta chains, which are expressed by antigen presenting cells, B cells, monocytes and activated T lymphocytes. The major histocompatibility complex (MHC) is a cluster of genes that are important in the immune response to infections. In Humans, this complex is referred to as the Human leukocyte antigen (HLA) region. There are 3 major MHC class II proteins encoded by the HLA which are HLA DP, HLA DQ and HLA DR.
Tested Reactivity	Hu
Tested Application	FACS
Host	Mouse
Clonality	Monoclonal
Clone	WR18
Isotype	IgG2a
Target Name	HLA DP + DQ + DR
Species	Human
Immunogen	Human HLA Class II (DP, DQ, DR).
Conjugation	FITC
Alternate Names	DP(W3); HLASB; HLADP; HLA class II histocompatibility antigen, DP alpha 1 chain; HLA-DP1A; MHC class II DP3-alpha; W4; W3; PLT1; DP(W4); HLA-SB alpha chain; DP; MHC class II DPA1

Application Instructions

Application table	<table> <tr> <th>Application</th><th>Dilution</th></tr> <tr> <td>FACS</td><td>Neat - 1:10</td></tr> </table>	Application	Dilution	FACS	Neat - 1:10
Application	Dilution				
FACS	Neat - 1:10				
Application Note	FACS: Use 10 µl of the suggested working dilution to label 10 ⁶ cells or 100 µl whole blood. * The dilutions indicate recommended starting dilutions and the optimal dilutions or concentrations should be determined by the scientist.				

Properties

Form	Liquid
Purification	Purification with Protein A.
Buffer	PBS, 0.09% Sodium azide and 1% BSA.
Preservative	0.09% Sodium azide
Stabilizer	1% BSA
Concentration	0.1 mg/ml
Storage instruction	Aliquot and store in the dark at 2-8°C. Keep protected from prolonged exposure to light. Avoid

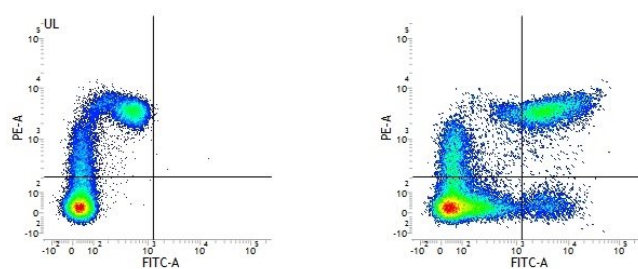
repeated freeze/thaw cycles. Suggest spin the vial prior to opening. The antibody solution should be gently mixed before use.

Note

For laboratory research only, not for drug, diagnostic or other use.

Bioinformation

Gene Symbol	HLA-DPA1
Gene Full Name	major histocompatibility complex, class II, DP alpha 1
Background	<p>HLA-DPA1 belongs to the HLA class II alpha chain paralogues. This class II molecule is a heterodimer consisting of an alpha (DPA) and a beta (DPB) chain, both anchored in the membrane. It plays a central role in the immune system by presenting peptides derived from extracellular proteins. Class II molecules are expressed in antigen presenting cells (APC: B lymphocytes, dendritic cells, macrophages). The alpha chain is approximately 33-35 kDa and its gene contains 5 exons. Exon one encodes the leader peptide, exons 2 and 3 encode the two extracellular domains, exon 4 encodes the transmembrane domain and the cytoplasmic tail. Within the DP molecule both the alpha chain and the beta chain contain the polymorphisms specifying the peptide binding specificities, resulting in up to 4 different molecules. [provided by RefSeq, Jul 2008]</p>
Function	<p>Binds peptides derived from antigens that access the endocytic route of antigen presenting cells (APC) and presents them on the cell surface for recognition by the CD4 T-cells. The peptide binding cleft accommodates peptides of 10-30 residues. The peptides presented by MHC class II molecules are generated mostly by degradation of proteins that access the endocytic route, where they are processed by lysosomal proteases and other hydrolases. Exogenous antigens that have been endocytosed by the APC are thus readily available for presentation via MHC II molecules, and for this reason this antigen presentation pathway is usually referred to as exogenous. As membrane proteins on their way to degradation in lysosomes as part of their normal turn-over are also contained in the endosomal/lysosomal compartments, exogenous antigens must compete with those derived from endogenous components. Autophagy is also a source of endogenous peptides, autophagosomes constitutively fuse with MHC class II loading compartments. In addition to APCs, other cells of the gastrointestinal tract, such as epithelial cells, express MHC class II molecules and CD74 and act as APCs, which is an unusual trait of the GI tract. To produce a MHC class II molecule that presents an antigen, three MHC class II molecules (heterodimers of an alpha and a beta chain) associate with a CD74 trimer in the ER to form a heterononamer. Soon after the entry of this complex into the endosomal/lysosomal system where antigen processing occurs, CD74 undergoes a sequential degradation by various proteases, including CTSS and CTSB, leaving a small fragment termed CLIP (class-II-associated invariant chain peptide). The removal of CLIP is facilitated by HLA-DM via direct binding to the alpha-beta-CLIP complex so that CLIP is released. HLA-DM stabilizes MHC class II molecules until primary high affinity antigenic peptides are bound. The MHC II molecule bound to a peptide is then transported to the cell membrane surface. In B-cells, the interaction between HLA-DM and MHC class II molecules is regulated by HLA-DO. Primary dendritic cells (DCs) also to express HLA-DO. Lysosomal microenvironment has been implicated in the regulation of antigen loading into MHC II molecules, increased acidification produces increased proteolysis and efficient peptide loading. [UniProt]</p>
Calculated Mw	29 kDa



ARG22775 anti-HLA DP + DQ + DR antibody [WR18] (FITC) FACS image

Flow Cytometry: Figure A. anti-Human CD11c (RPE) and Mouse IgG2a isotype control (FITC). Figure B. anti-Human CD11c (RPE) and ARG22775 anti-HLA DP + DQ + DR antibody [WR18] (FITC). All experiments performed on Human Peripheral blood mononuclear cells.