

ARG22782 anti-Lymphocytes + Langerhans cells antibody [MsGp2]

Package: 100 µg

Store at: -20°C

Summary

Product Description	<p>Mouse Monoclonal antibody [MsGp2] recognizes Lymphocytes + Langerhans cells</p> <p>This antibody recognizes an antigen present on the majority of T and B lymphocytes and thymocytes, although the antigen is not expressed by germinal centre cells of the lymph node (Kraal et al 1986). Mouse anti Guinea pig lymphocytes and Langerhans cells antibody, clone MsGp2 also reacts strongly with epidermal Langerhans cells, giving a superior profile than anti-MHC Class II antibodies on these cells (Healey et al. 1987).</p> <p>Clone MsGp2 has the same distribution as Mouse anti Guinea pig CD90 antibody, clone CT4 which detects an antigen reportedly involved in the organ non-specific trafficking of guinea Pig lymphocytes (Kraal et al 1988). However, unlike clone CT4, clone MsGp2 does not functionally inhibit lymphocyte adherence to high endothelial venules in vitro (Healey et al. 1987).</p>
Tested Reactivity	Gpig
Tested Application	FACS, IHC-Fr
Host	Mouse
Clonality	Monoclonal
Clone	MsGp2
Isotype	IgG1
Target Name	Lymphocytes + Langerhans cells
Species	Guinea pig
Immunogen	Nylon wool adherent B cells
Conjugation	Un-conjugated

Application Instructions

Application table	Application	Dilution
	FACS	1:50 - 1:200
	IHC-Fr	Assay-dependent
Application Note	* The dilutions indicate recommended starting dilutions and the optimal dilutions or concentrations should be determined by the scientist.	

Properties

Form	Liquid
Purification	Purification with Protein A.
Buffer	PBS and 0.09% Sodium azide.
Preservative	0.09% Sodium azide
Concentration	1 mg/ml

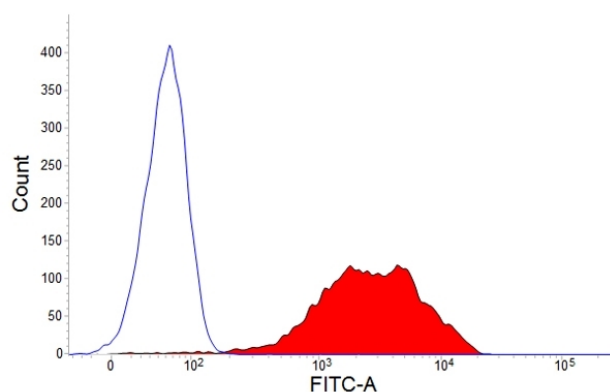
Storage instruction

For continuous use, store undiluted antibody at 2-8°C for up to a week. For long-term storage, aliquot and store at -20°C or below. Storage in frost free freezers is not recommended. Avoid repeated freeze/thaw cycles. Suggest spin the vial prior to opening. The antibody solution should be gently mixed before use.

Note

For laboratory research only, not for drug, diagnostic or other use.

Images



ARG22782 anti-Lymphocytes + Langerhans cells antibody [MsGp2]
FACS image

Flow Cytometry: Guinea pig peripheral blood lymphocytes stained with ARG22782 anti-Lymphocytes + Langerhans cells antibody [MsGp2] followed by Goat anti-Mouse IgG (H/L) (FITC).