

ARG22866 anti-CD11b antibody [5C6] (PE)

Package: 50 tests
Store at: 4°C

Summary

Product Description	PE-conjugated Rat Monoclonal antibody [5C6] recognizes CD11b Rat anti Mouse CD11b antibody, clone 5C6 recognizes CD11b, also known as the integrin alpha M chain. CD11b is implicated in various adhesive interactions of monocytes, macrophages and granulocytes as well as in mediating the uptake of complement-coated particles. Rat anti Mouse CD11b antibody, clone 5C6 immunoprecipitates a heterodimer of ~165 and ~95 kDa. Rat anti Mouse CD11b antibody, clone 5C6 exhibits various functional properties, reportedly inhibiting adhesion in vitro and inflammatory recruitment in vivo. Rat anti Mouse CD11b antibody, clone 5C6 also inhibits delayed hypersensitivity, potentiates bacterial infections and inhibits type 1 diabetes.
Tested Reactivity	Hu, Ms
Tested Application	FACS
Host	Rat
Clonality	Monoclonal
Clone	5C6
Isotype	IgG2b
Target Name	CD11b
Species	Mouse
Immunogen	Thioglycollate-elicited Peritoneal Macrophages (TPM)
Conjugation	PE
Alternate Names	MAC1A; CR3A; CR-3 alpha chain; Cell surface glycoprotein MAC-1 subunit alpha; Integrin alpha-M; MAC-1; CD11 antigen-like family member B; Leukocyte adhesion receptor MO1; MO1A; SLEB6; Neutrophil adherence receptor; CD antigen CD11b; CD11B

Application Instructions

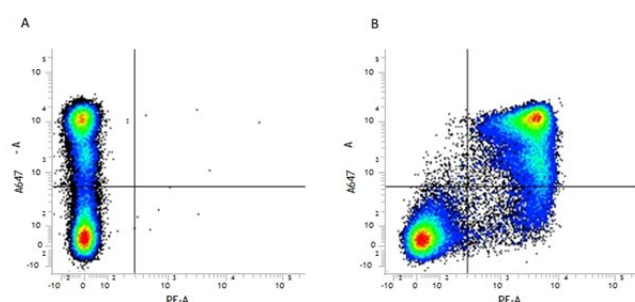
Application table	<table> <tr> <th>Application</th><th>Dilution</th></tr> <tr> <td>FACS</td><td>1:10</td></tr> </table>	Application	Dilution	FACS	1:10
Application	Dilution				
FACS	1:10				
Application Note	<p>FACS: Use 10 µl of the suggested working dilution to label 10⁶ cells in 100 µl</p> <p>* The dilutions indicate recommended starting dilutions and the optimal dilutions or concentrations should be determined by the scientist.</p>				

Properties

Form	Liquid
Purification	Purified by ion exchange chromatography.
Buffer	PBS, 0.09% Sodium azide, 1% BSA and 5% Sucrose
Preservative	0.09% Sodium azide
Stabilizer	1% BSA and 5% Sucrose

Storage instruction	Aliquot and store in the dark at 2-8°C. Keep protected from prolonged exposure to light. Avoid repeated freeze/thaw cycles. Suggest spin the vial prior to opening. The antibody solution should be gently mixed before use.
Note	For laboratory research only, not for drug, diagnostic or other use.
Bioinformation	
Gene Symbol	Itgam
Gene Full Name	integrin alpha M
Background	CD11b (integrin alpha M chain): Integrins are heterodimeric integral membrane proteins composed of an alpha chain and a beta chain. This I-domain containing alpha integrin combines with the beta 2 chain (ITGB2) to form a leukocyte-specific integrin referred to as macrophage receptor 1 ('Mac-1'), or inactivated-C3b (iC3b) receptor 3 ('CR3'). The alpha M beta 2 integrin is important in the adherence of neutrophils and monocytes to stimulated endothelium, and also in the phagocytosis of complement coated particles. Multiple transcript variants encoding different isoforms have been found for this gene. [provided by RefSeq, Mar 2009]
Function	CD11b: Integrin ITGAM/ITGB2 is implicated in various adhesive interactions of monocytes, macrophages and granulocytes as well as in mediating the uptake of complement-coated particles and pathogens (PubMed:9558116, PubMed:2008295). It is identical with CR-3, the receptor for the iC3b fragment of the third complement component. It probably recognizes the R-G-D peptide in C3b. Integrin ITGAM/ITGB2 is also a receptor for fibrinogen, factor X and ICAM1. It recognizes P1 and P2 peptides of fibrinogen gamma chain. Regulates neutrophil migration (PubMed:28807980). In association with beta subunit ITGB2/CD18, required for CD177-PRTN3-mediated activation of TNF primed neutrophils (PubMed:21193407). May regulate phagocytosis-induced apoptosis in extravasated neutrophils. May play a role in mast cell development. Required with TYROBP/DAP12 in microglia to control production of microglial superoxide ions which promote the neuronal apoptosis that occurs during brain development. [UniProt]
Highlight	Related products: CD11b antibodies ; CD11b Duos / Panels ; Anti-Rat IgG secondary antibodies ; Related news: New antibody panels and duos for Tumor immune microenvironment Anti-SerpinB9 therapy, a new strategy for cancer therapy
Research Area	MDSC Marker antibody; Myeloid-derived suppressor cell antibody
Calculated Mw	127 kDa

Images



ARG22866 anti-CD11b antibody [5C6] (PE) FACS image

Flow Cytometry: Figure A. Alexa Fluor647 conjugated Rat anti Mouse Gr-1 and PE-conjugated Rat IgG2b isotype control. Figure B. Alexa Fluor647 conjugated Rat anti Mouse Gr-1 and ARG22866 anti-CD11b antibody [5C6] (PE). All experiments performed on murine bone marrow.