

ARG22888 anti-CD32 antibody [AT10]

Package: 100 µg
Store at: -20°C

Summary

Product Description	Mouse Monoclonal antibody [AT10] recognizes CD32 Mouse anti Human CD32 antibody, clone AT10 recognizes the human CD32 antigen, a ~40 kDa glycoprotein that acts as a low affinity receptor for IgG (also known as Fc gamma RII). The antigen mediates several functions including endocytosis, activation of secretion, cytotoxicity and immunomodulation. CD32 is expressed by B cells, monocytes, granulocytes and platelets. Clone AT10 blocks the binding of IgG to Fc gamma RII (Larsson et al. 1997).
Tested Reactivity	Hu, Dog, Pig, R. Mk
Tested Application	FACS, IHC-Fr, IP
Host	Mouse
Clonality	Monoclonal
Clone	AT10
Isotype	IgG1
Target Name	CD32
Species	Human
Immunogen	K562 cell line.
Conjugation	Un-conjugated
Alternate Names	Fc-gamma RII-a; CD antigen CD32; FcGR; IgG Fc receptor II-a; FCGR2A1; CD32A; FCGR2; Low affinity immunoglobulin gamma Fc region receptor II-a; FcRII-a; Fc-gamma-RIIa; FCG2; IGFR2; CD32; CDw32

Application Instructions

Application table	<table> <tr> <th>Application</th><th>Dilution</th></tr> <tr> <td>FACS</td><td>20 µg/ml</td></tr> <tr> <td>IHC-Fr</td><td>1:500 - 1:1000</td></tr> <tr> <td>IP</td><td>20 µg/ml</td></tr> </table>	Application	Dilution	FACS	20 µg/ml	IHC-Fr	1:500 - 1:1000	IP	20 µg/ml
Application	Dilution								
FACS	20 µg/ml								
IHC-Fr	1:500 - 1:1000								
IP	20 µg/ml								
Application Note	<p>Functional study: This product contains sodium azide, removal by dialysis is recommended prior to use in functional assays.</p> <p>IHC-Fr: The epitope recognised by this antibody is reported to be sensitive to formaldehyde fixation and tissue processing. Arigo recommends the use of acetone fixation for frozen sections.</p> <p>FACS: Use 10 µl of the suggested working dilution to label 10⁶ cells or cells or 100 µl whole blood.</p> <p>* The dilutions indicate recommended starting dilutions and the optimal dilutions or concentrations should be determined by the scientist.</p>								

Properties

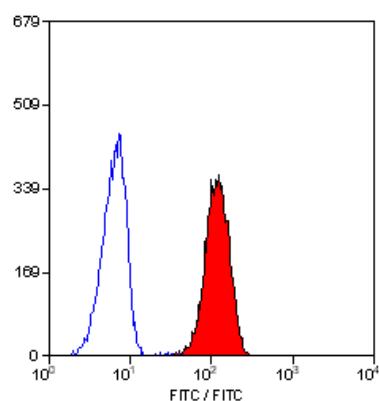
Form	Liquid
Purification	Purification with Protein A.

Buffer	PBS and 0.09% Sodium azide
Preservative	0.09% Sodium azide
Concentration	1 mg/ml
Storage instruction	For continuous use, store undiluted antibody at 2-8°C for up to a week. For long-term storage, aliquot and store at -20°C or below. Storage in frost free freezers is not recommended. Avoid repeated freeze/thaw cycles. Suggest spin the vial prior to opening. The antibody solution should be gently mixed before use.
Note	For laboratory research only, not for drug, diagnostic or other use.

Bioinformation

Gene Symbol	FCGR2A
Gene Full Name	Fc fragment of IgG, low affinity IIa, receptor (CD32)
Background	This gene encodes one member of a family of immunoglobulin Fc receptor genes found on the surface of many immune response cells. The protein encoded by this gene is a cell surface receptor found on phagocytic cells such as macrophages and neutrophils, and is involved in the process of phagocytosis and clearing of immune complexes. Alternative splicing results in multiple transcript variants. [provided by RefSeq, Oct 2008]
Function	Binds to the Fc region of immunoglobulins gamma. Low affinity receptor. By binding to IgG it initiates cellular responses against pathogens and soluble antigens. Promotes phagocytosis of opsonized antigens. [UniProt]
Calculated Mw	35 kDa
PTM	Phosphorylated by SRC-type Tyr-kinases such as LYN, BLK, FYN, HCK and SYK.

Images



ARG22888 anti-CD32 antibody [AT10] FACS image

Flow Cytometry: Human peripheral blood granulocytes stained with ARG22888 anti-CD32 antibody [AT10].