

ARG22908 anti-CD21 antibody [LB21] (FITC)

Package: 50 µg
Store at: 4°C

Summary

Product Description	FITC-conjugated Mouse Monoclonal antibody [LB21] recognizes CD21 Mouse anti Human CD21 antibody, clone LB21 recognizes the human Complement receptor type 2, also known as CD21 or the Epstein-Barr virus receptor. CD21 is a ~14 kDa cell surface glycoprotein expressed by mature B cells and by follicular dendritic cells. The molecule acts as a receptor for complement components C3d, C3dg and iC3b, as well as for Epstein Barr Virus. It forms part of a large signal transduction complex in association with CD19.
Tested Reactivity	Hu, Bov, Cat, Goat, Sheep
Tested Application	FACS
Host	Mouse
Clonality	Monoclonal
Clone	LB21
Isotype	IgG1
Target Name	CD21
Species	Human
Immunogen	Human IM9 cell line.
Conjugation	FITC
Alternate Names	Cr2; Complement C3d receptor; C3DR; CD21; CD antigen CD21; Complement receptor type 2; SLEB9; CR; CVID7; Epstein-Barr virus receptor; EBV receptor

Application Instructions

Application table	<table> <tr> <th>Application</th><th>Dilution</th></tr> <tr> <td>FACS</td><td>Neat - 1:10</td></tr> </table>	Application	Dilution	FACS	Neat - 1:10
Application	Dilution				
FACS	Neat - 1:10				
Application Note	FACS: Use 10 µl of the suggested working dilution to label 10 ⁶ cells or 100 µl human whole blood. * The dilutions indicate recommended starting dilutions and the optimal dilutions or concentrations should be determined by the scientist.				

Properties

Form	Liquid
Purification	Purified by ion exchange chromatography.
Buffer	PBS, 0.09% Sodium azide and 1% BSA
Preservative	0.09% Sodium azide
Stabilizer	1% BSA
Concentration	0.1 mg/ml
Storage instruction	Aliquot and store in the dark at 2-8°C. Keep protected from prolonged exposure to light. Avoid

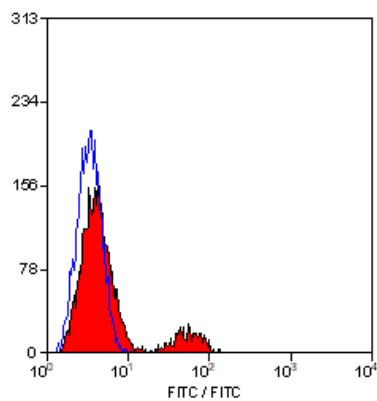
repeated freeze/thaw cycles. Suggest spin the vial prior to opening. The antibody solution should be gently mixed before use.

Note For laboratory research only, not for drug, diagnostic or other use.

Bioinformation

Gene Symbol	CR2
Gene Full Name	complement component (3d/Epstein Barr virus) receptor 2
Background	This gene encodes a membrane protein, which functions as a receptor for Epstein-Barr virus (EBV) binding on B and T lymphocytes. Genetic variations in this gene are associated with susceptibility to systemic lupus erythematosus type 9 (SLEB9). Alternatively spliced transcript variants encoding different isoforms have been found for this gene.[provided by RefSeq, Sep 2009]
Function	Receptor for complement C3Dd, for the Epstein-Barr virus on human B-cells and T-cells and for HNRPU. Participates in B lymphocytes activation. [UniProt]
Calculated Mw	113 kDa

Images



ARG22908 anti-CD21 antibody [LB21] (FITC) FACS image

Flow Cytometry: Human peripheral blood lymphocytes stained with ARG22908 anti-CD21 antibody [LB21] (FITC).