

ARG22951 anti-CD31 antibody [WM59] (PE)

Package: 50 tests
Store at: 4°C

Summary

Product Description	PE-conjugated Mouse Monoclonal antibody [WM59] recognizes CD31 Mouse anti Human CD31 monoclonal antibody, clone WM59 recognizes the human CD31 antigen, a ~130 kDa single pass type I transmembrane glycoprotein bearing six C2 immunoglobulin domains. CD31 is expressed by all continuous endothelia including arteries, veins and non-sinusoidal capillaries, platelets, granulocytes and some lymphocytes. CD31 is not expressed by discontinuous endothelia such as hepatic sinusoids and splenic red pulp (Muller et al. 1989). CD31 is also known as PECAM-1. The binding epitope for mouse anti human CD31, clone WM59 has been mapped to the Ig-like domain 2 (Fawcett et al. 1995).
Tested Reactivity	Hu, R. Mk
Tested Application	FACS
Host	Mouse
Clonality	Monoclonal
Clone	WM59
Isotype	IgG1
Target Name	CD31
Species	Human
Conjugation	PE
Alternate Names	EndoCAM; CD31/EndoCAM; PECAM-1; CD31; PECA1; CD antigen CD31; GPIIA ¹ ; endoCAM; Platelet endothelial cell adhesion molecule

Application Instructions

Application table	<table> <tr> <th>Application</th><th>Dilution</th></tr> <tr> <td>FACS</td><td>Neat</td></tr> </table>	Application	Dilution	FACS	Neat
Application	Dilution				
FACS	Neat				
Application Note	<p>FACS: Use 10 µl of the suggested working dilution to label 10⁶ cells in 100 µl.</p> <p>* The dilutions indicate recommended starting dilutions and the optimal dilutions or concentrations should be determined by the scientist.</p>				

Properties

Form	Liquid
Purification	Purification with Protein G.
Buffer	PBS, 0.09% Sodium azide, 1% BSA and 5% Sucrose
Preservative	0.09% Sodium azide
Stabilizer	1% BSA and 5% Sucrose
Storage instruction	Aliquot and store in the dark at 2-8°C. Keep protected from prolonged exposure to light. Avoid repeated freeze/thaw cycles. Suggest spin the vial prior to opening. The antibody solution should be

gently mixed before use.

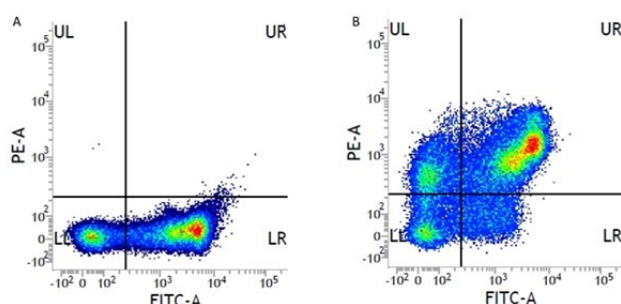
Note

For laboratory research only, not for drug, diagnostic or other use.

Bioinformation

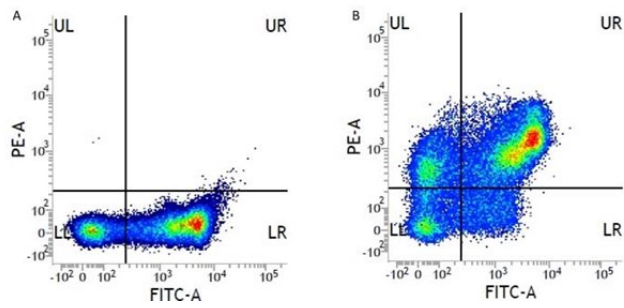
Gene Symbol	PECAM1
Gene Full Name	platelet/endothelial cell adhesion molecule 1
Background	CD31 protein is found on the surface of platelets, monocytes, neutrophils, and some types of T-cells, and makes up a large portion of endothelial cell intercellular junctions. The encoded protein is a member of the immunoglobulin superfamily and is likely involved in leukocyte migration, angiogenesis, and integrin activation. [provided by RefSeq, May 2010]
Function	<p>CD31 is a cell adhesion molecule which is required for leukocyte transendothelial migration (TEM) under most inflammatory conditions (PubMed:19342684, PubMed:17580308). Tyr-690 plays a critical role in TEM and is required for efficient trafficking of PECAM1 to and from the lateral border recycling compartment (LBRC) and is also essential for the LBRC membrane to be targeted around migrating leukocytes (PubMed:19342684). Trans-homophilic interaction may play a role in endothelial cell-cell adhesion via cell junctions (PubMed:27958302). Heterophilic interaction with CD177 plays a role in transendothelial migration of neutrophils (PubMed:17580308). Homophilic ligation of PECAM1 prevents macrophage-mediated phagocytosis of neighboring viable leukocytes by transmitting a detachment signal (PubMed:12110892). Promotes macrophage-mediated phagocytosis of apoptotic leukocytes by tethering them to the phagocytic cells; PECAM1-mediated detachment signal appears to be disabled in apoptotic leukocytes (PubMed:12110892). Modulates bradykinin receptor BDKRB2 activation (PubMed:18672896). Regulates bradykinin- and hyperosmotic shock-induced ERK1/2 activation in endothelial cells (PubMed:18672896). Induces susceptibility to atherosclerosis.</p> <p>Isoform Delta15: Does not protect against apoptosis. [UniProt]</p>
Research Area	Cancer antibody; Cell Biology and Cellular Response antibody; Controls and Markers antibody; Developmental Biology antibody; Signaling Transduction antibody; Endothelial Cell Marker antibody; Microvascular Density Study antibody
Calculated Mw	83 kDa
PTM	<p>Phosphorylated on Ser and Tyr residues after cellular activation. Phosphorylated on tyrosine residues by FER and FES in response to FCER1 activation (By similarity). In endothelial cells Fyn mediates mechanical-force (stretch or pull) induced tyrosine phosphorylation.</p> <p>Palmitoylation by ZDHHC21 is necessary for cell surface expression in endothelial cells and enrichment in membrane rafts.</p>

Images



ARG22951 anti-CD31 antibody [WM59] (PE) FACS image

Flow Cytometry: Figure A. FITC conjugated Mouse anti Human CD11b and PE-conjugated Mouse IgG1 isotype control. Figure B. FITC conjugated Mouse anti Human CD11b and ARG22951 anti-CD31 antibody [WM59] (PE). All experiments performed on red cell lysed Human peripheral blood gated on all mononuclear cells.



ARG22951 anti-CD31 antibody [WM59] (PE) FACS image

Flow Cytometry: Figure A. FITC conjugated Mouse anti Human CD11b and PE-conjugated Mouse IgG1 isotype control. Figure B. FITC conjugated Mouse anti Human CD11b and ARG22951 anti-CD31 antibody [WM59] (PE). All experiments performed on red cell lysed Human peripheral blood gated on all mononuclear cells.