

ARG22965 anti-CD151 antibody [11G5a]

Package: 100 µg
Store at: -20°C

Summary

Product Description	Mouse Monoclonal antibody [11G5a] recognizes CD151 Mouse anti Human CD151 antibody, clone 11G5a recognizes the human CD151 cell surface antigen, also known as PETA-3. CD151 is expressed by epithelial cells, endothelial cells, platelets, megakaryocytes, monocytes and in the renal glomeruli and proximal and distal tubules. CD151 is not expressed by lymphocytes or granulocytes. More recently CD151 has also been shown to be expressed by erythrocytes, and to carry the MER2 blood group antigen (Crew et al. 2004). It should be noted that CD151 is very closely associated with the alpha3 beta1 integrin in cells and co-immunoprecipitation may occur even in quite stringent conditions (Yauch. et al. 1998).
Tested Reactivity	Hu
Tested Application	ELISA, FACS, ICC/IF, IHC-Fr, IHC-P, IP, WB
Host	Mouse
Clonality	Monoclonal
Clone	11G5a
Isotype	IgG1
Target Name	CD151
Species	Human
Conjugation	Un-conjugated
Alternate Names	SFA1; Tetraspanin-24; GP27; Tspan-24; MER2; TSPAN24; PETA-3; RAPH; Membrane glycoprotein SFA-1; CD151 antigen; CD antigen CD151; Platelet-endothelial tetraspan antigen 3

Application Instructions

Application table	Application	Dilution
	ELISA	Assay-dependent
	FACS	1:50 - 1:100
	ICC/IF	Assay-dependent
	IHC-Fr	Assay-dependent
	IHC-P	1:100
	IP	Assay-dependent
	WB	Assay-dependent (under non-reducing conditions)
	Application Note	
IHC-P: Antigen Retrieval: Boil tissue section in Sodium citrate buffer (pH 6.0). WB: Clone 11G5a recognises human CD151 under non-reducing conditions. FACS: Use 10 µl of the suggested working dilution to label 10^6 cells or 100 µl whole blood. * The dilutions indicate recommended starting dilutions and the optimal dilutions or concentrations should be determined by the scientist.		

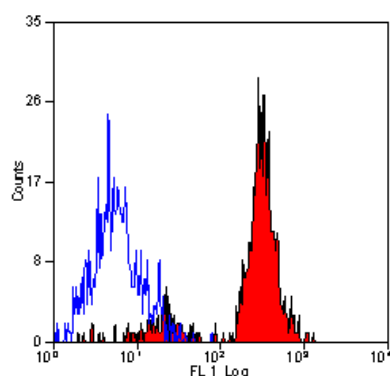
Properties

Form	Liquid
Purification	Purification with Protein G.
Buffer	PBS and 0.09% Sodium azide
Preservative	0.09% Sodium azide
Concentration	1 mg/ml
Storage instruction	For continuous use, store undiluted antibody at 2-8°C for up to a week. For long-term storage, aliquot and store at -20°C or below. Storage in frost free freezers is not recommended. Avoid repeated freeze/thaw cycles. Suggest spin the vial prior to opening. The antibody solution should be gently mixed before use.
Note	For laboratory research only, not for drug, diagnostic or other use.

Bioinformation

Gene Symbol	CD151
Gene Full Name	CD151 molecule (Raph blood group)
Background	The protein encoded by this gene is a member of the transmembrane 4 superfamily, also known as the tetraspanin family. Most of these members are cell-surface proteins that are characterized by the presence of four hydrophobic domains. The proteins mediate signal transduction events that play a role in the regulation of cell development, activation, growth and motility. This encoded protein is a cell surface glycoprotein that is known to complex with integrins and other transmembrane 4 superfamily proteins. It is involved in cellular processes including cell adhesion and may regulate integrin trafficking and/or function. This protein enhances cell motility, invasion and metastasis of cancer cells. Multiple alternatively spliced transcript variants that encode the same protein have been described for this gene. [provided by RefSeq, Jul 2008]
Function	Essential for the proper assembly of the glomerular and tubular basement membranes in kidney. [UniProt]
Calculated Mw	28 kDa

Images



ARG22965 anti-CD151 antibody [11G5a] FACS image

Flow Cytometry: Human peripheral blood platelets stained with ARG22965 anti-CD151 antibody [11G5a].