

## ARG22999 anti-CD107b / LAMP2 antibody [M3/84]

Package: 100 µg  
Store at: -20°C

### Summary

Product Description	Rat Monoclonal antibody [M3/84] recognizes CD107b / LAMP2 Rat anti Mouse CD107b antibody, clone M3/84 recognizes murine CD107b, also known as MAC-3 and LAMP-2. CD107b is a transmembrane glycoprotein that is associated with lysosomal membranes and is primarily expressed on mononuclear phagocytes. Expression of CD107b does vary between cell populations and the molecular weight of CD107b can vary between ~92-120 kDa. Studies suggest that CD107b may be involved in leucocyte adhesion. The expression of CD107b is predominantly cytoplasmic - flow cytometry results are improved by the use of a membrane permeabilisation procedure prior to staining.
Tested Reactivity	Ms
Tested Application	FACS, IHC-Fr, IHC-P, IP, WB
Host	Rat
Clonality	Monoclonal
Clone	M3/84
Isotype	IgG1
Target Name	CD107b / LAMP2
Species	Mouse
Immunogen	Glycoproteins purified from Mouse peritoneal macrophage membranes.
Conjugation	Un-conjugated
Alternate Names	CD antigen CD107b; LAMPB; CD107b; LGP110; Lysosome-associated membrane glycoprotein 2; LAMP-2; CD107 antigen-like family member B; Lysosome-associated membrane protein 2

### Application Instructions

Application table	Application	Dilution
	FACS	1:50 - 1:100
	IHC-Fr	Assay-dependent
	IHC-P	Assay-dependent
	IP	Assay-dependent
	WB	Assay-dependent
Application Note	FACS: Membrane permeabilisation is required for this application. Use 10 µl of the suggested working dilution to label 10 <sup>6</sup> cells in 100 µl. * The dilutions indicate recommended starting dilutions and the optimal dilutions or concentrations should be determined by the scientist.	

### Properties

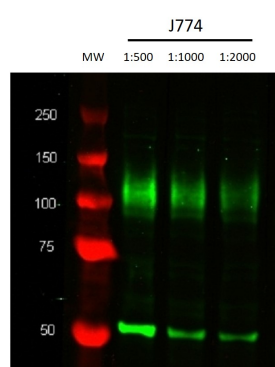
Form	Liquid
------	--------

Purification	Purification with Protein G.
Buffer	PBS and 0.09% Sodium azide
Preservative	0.09% Sodium azide
Concentration	1 mg/ml
Storage instruction	For continuous use, store undiluted antibody at 2-8°C for up to a week. For long-term storage, aliquot and store at -20°C or below. Storage in frost free freezers is not recommended. Avoid repeated freeze/thaw cycles. Suggest spin the vial prior to opening. The antibody solution should be gently mixed before use.
Note	For laboratory research only, not for drug, diagnostic or other use.

## Bioinformation

Gene Symbol	Lamp2
Gene Full Name	lysosomal-associated membrane protein 2
Background	The protein encoded by this gene is a member of a family of membrane glycoproteins. This glycoprotein provides selectins with carbohydrate ligands. It may play a role in tumor cell metastasis. It may also function in the protection, maintenance, and adhesion of the lysosome. Alternative splicing of this gene results in multiple transcript variants encoding distinct proteins. [provided by RefSeq, Jul 2008]
Function	Implicated in tumor cell metastasis. May function in protection of the lysosomal membrane from autodigestion, maintenance of the acidic environment of the lysosome, adhesion when expressed on the cell surface (plasma membrane), and inter- and intracellular signal transduction. Protects cells from the toxic effects of methylating mutagens. [UniProt]
Calculated Mw	45 kDa
PTM	O- and N-glycosylated; some of the 16 N-linked glycans are polylactosaminoglycans.

## Images



ARG22999 anti-CD107b / LAMP2 antibody [M3/84] WB image

Western blot: J774 cell lysate stained with ARG22999 anti-CD107b / LAMP2 antibody [M3/84] at 1:500, 1:1000 and 1:2000 dilution. Rat anti-Tubulin alpha is included as a loading control.