

## ARG23047 anti-CD3 antibody [KT3] (APC)

Package: 50 tests  
Store at: 4°C

### Summary

Product Description	APC-conjugated Rat Monoclonal antibody [KT3] recognizes CD3 CD3 antibody, clone KT3 recognizes the mouse CD3 antigen expressed by mature T cells. Clone KT3 may be used to trigger proliferation and cytotoxicity of CD3 positive cells.
Tested Reactivity	Ms
Tested Application	FACS, IHC-Fr
Host	Rat
Clonality	Monoclonal
Clone	KT3
Isotype	IgG2a
Target Name	CD3
Species	Mouse
Immunogen	CBAT6 thymocytes.
Conjugation	APC

### Application Instructions

Application table	Application	Dilution
	FACS	1:50 - 1:100
	IHC-Fr	Assay-dependent

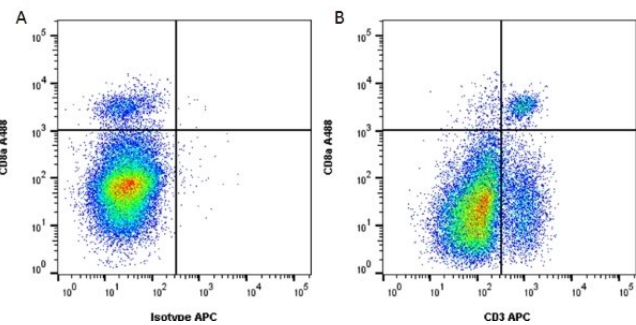
Application Note	<p>IHC-Fr: The epitope recognised by this antibody is reported to be sensitive to formaldehyde fixation and tissue processing. Arigo recommends the use of acetone fixation for frozen sections.</p> <p>FACS: Use 10 µl of the suggested working dilution to label 10<sup>6</sup> cells in 100 µl.</p> <p>* The dilutions indicate recommended starting dilutions and the optimal dilutions or concentrations should be determined by the scientist.</p>
------------------	--

### Properties

Form	Liquid
Purification	Purification with Protein A.
Buffer	PBS, 0.09% Sodium azide, 1% BSA and 5% Sucrose
Preservative	0.09% Sodium azide
Stabilizer	1% BSA and 5% Sucrose
Storage instruction	Aliquot and store in the dark at 2-8°C. Keep protected from prolonged exposure to light. Avoid repeated freeze/thaw cycles. Suggest spin the vial prior to opening. The antibody solution should be gently mixed before use.
Note	For laboratory research only, not for drug, diagnostic or other use.

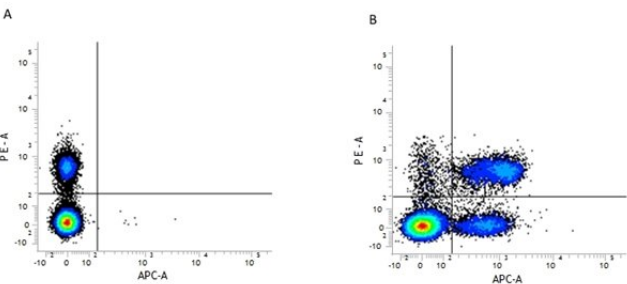
Gene Symbol	CD3D, CD3E, CD3G, CD247
Gene Full Name	CD3 Delta Subunit Of T-Cell Receptor Complex, CD3 Epsilon Subunit Of T-Cell Receptor Complex, CD3 Gamma Subunit Of T-Cell Receptor Complex, CD247 Molecule
Background	CD3 (cluster of differentiation 3) is a protein complex and T cell co-receptor that is involved in activating both the cytotoxic T cell (CD8+ naive T cells) and T helper cells (CD4+ naive T cells). It is composed of four distinct chains. In mammals, the complex contains a CD3γ chain, a CD3δ chain, and two CD3ε chains. These chains associate with the T-cell receptor (TCR) and the CD3-zeta (ζ-chain) to generate an activation signal in T lymphocytes. The TCR, CD3-zeta, and the other CD3 molecules together constitute the TCR complex.
Highlight	Related products: <a href="#">CD3 antibodies</a> ; <a href="#">CD3 ELISA Kits</a> ; <a href="#">CD3 Duos / Panels</a> ; <a href="#">CD3 recombinant proteins</a> ; <a href="#">Anti-Rat IgG secondary antibodies</a> ; Related news: <a href="#">New antibody panels and duos for Tumor immune microenvironment</a> <a href="#">Tumor-Infiltrating Lymphocytes (TILs)</a> <a href="#">Exploring Antiviral Immune Response</a>
Calculated Mw	20 kDa

Images



ARG23047 anti-CD3 antibody [KT3] (APC) FACS image

Flow Cytometry: Figure A. Alexa Fluor 488 conjugated rat anti mouse CD8a and APC conjugated rat IgG2a isotype control. Figure B. Alexa Fluor 488 conjugated rat anti mouse CD8a and ARG23047 anti-CD3 antibody [KT3] (APC). All experiments performed on red cell lysed murine splenocytes gated on mononuclear cells.



ARG23047 anti-CD3 antibody [KT3] (APC) FACS image

Flow Cytometry: Figure A. RPE conjugated Rat anti Mouse CD4 and APC conjugated Rat IgG2a isotype control. Figure B. RPE conjugated Rat anti Mouse CD4 and ARG23047 anti-CD3 antibody [KT3] (APC). All experiments performed on murine splenocytes.