

ARG23069 anti-CD68 antibody [KP1] (FITC)

Package: 50 µg
Store at: 4°C

Summary

Product Description	FITC-conjugated Mouse Monoclonal antibody [KP1] recognizes CD68 Mouse anti human CD68 antibody, clone KP1 recognises the human CD68 cell surface antigen, a 110kD glycoprotein primarily expressed by macrophages and monocytes.
Tested Reactivity	Hu, Rat, NHuPrm
Tested Application	FACS, ICC/IF
Host	Mouse
Clonality	Monoclonal
Clone	KP1
Isotype	IgG1
Target Name	CD68
Species	Human
Immunogen	Subcellular fraction of Human alveolar macrophages
Conjugation	FITC
Alternate Names	Macrosialin; CD antigen CD68; LAMP4; Gp110; GP110; SCARD1

Application Instructions

Application table	Application	Dilution
	FACS	Neat - 1:10
	ICC/IF	Assay-dependent
Application Note	<p>FACS: Membrane permeabilization is required for this application. Use 10 µl of the suggested working dilution to label 10⁶ cells in 100 µl.</p> <p>* The dilutions indicate recommended starting dilutions and the optimal dilutions or concentrations should be determined by the scientist.</p>	

Properties

Form	Liquid
Purification	Purification with Protein G.
Buffer	PBS, 0.09% Sodium azide and 1% BSA
Preservative	0.09% Sodium azide
Stabilizer	1% BSA
Concentration	0.1 mg/ml
Storage instruction	Aliquot and store in the dark at 2-8°C. Keep protected from prolonged exposure to light. Avoid repeated freeze/thaw cycles. Suggest spin the vial prior to opening. The antibody solution should be

gently mixed before use.

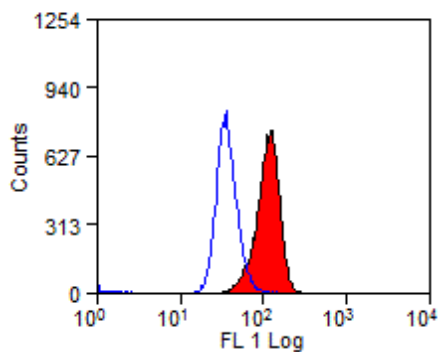
Note

For laboratory research only, not for drug, diagnostic or other use.

Bioinformation

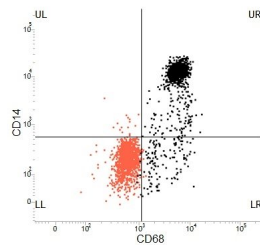
Gene Symbol	CD68
Gene Full Name	CD68 molecule
Background	CD68 is a 110-kD transmembrane glycoprotein that is highly expressed by human monocytes and tissue macrophages. It is a member of the lysosomal/endosomal-associated membrane glycoprotein (LAMP) family. The protein primarily localizes to lysosomes and endosomes with a smaller fraction circulating to the cell surface. It is a type I integral membrane protein with a heavily glycosylated extracellular domain and binds to tissue- and organ-specific lectins or selectins. The protein is also a member of the scavenger receptor family. Scavenger receptors typically function to clear cellular debris, promote phagocytosis, and mediate the recruitment and activation of macrophages. Alternative splicing results in multiple transcripts encoding different isoforms. [provided by RefSeq, Jul 2008]
Function	CD68 could play a role in phagocytic activities of tissue macrophages, both in intracellular lysosomal metabolism and extracellular cell-cell and cell-pathogen interactions. Binds to tissue- and organ-specific lectins or selectins, allowing homing of macrophage subsets to particular sites. Rapid recirculation of CD68 from endosomes and lysosomes to the plasma membrane may allow macrophages to crawl over selectin-bearing substrates or other cells. [UniProt]
Highlight	Related products: CD68 antibodies ; CD68 Duos / Panels ; Anti-Mouse IgG secondary antibodies ; Related news: New antibody panels and duos for Tumor immune microenvironment Tumor-Infiltrating Lymphocytes (TILs) Exploring Antiviral Immune Response Anti-SerpinB9 therapy, a new strategy for cancer therapy RIP1 activation and pathogenesis of NASH
Research Area	Immune System antibody; Activated Macrophage/Microglia Study antibody; Neuroinflammation Study antibody; Active macroglial Marker antibody; M1/M2/TAM Marker antibody; Macrophage Marker antibody; M1 macrophage Marker antibody; Inflammatory Cell Marker antibody
Calculated Mw	37 kDa
PTM	N- and O-glycosylated.

Images



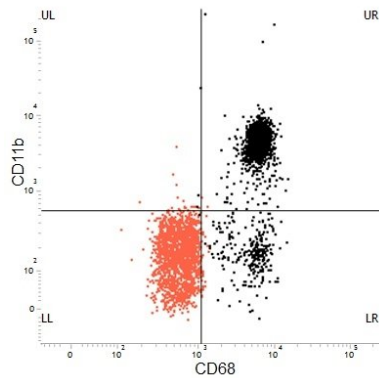
ARG23069 anti-CD68 antibody [KP1] (FITC) FACS image

Flow Cytometry: Human peripheral blood granulocytes stained with ARG23069 anti-CD68 antibody [KP1] (FITC). Permeabilisation was with Leucoperm.



ARG23069 anti-CD68 antibody [KP1] (FITC) FACS image

Flow Cytometry: Dot Blot showing FSC/SSC gated Human peripheral blood monocytes dual stained with ARG23069 anti-CD68 antibody [KP1] (FITC) at neat and anti-CD14 (A647) at neat. Isotype control pair in red. Permeabilisation was with Leucoperm.



ARG23069 anti-CD68 antibody [KP1] (FITC) FACS image

Flow Cytometry: Dot Blot showing FSC/SSC gated Human peripheral blood monocytes dual stained with ARG23069 anti-CD68 antibody [KP1] (FITC) at neat and anti-CD11b (A647) at neat. Isotype control pair in red. Permeabilisation was with Leucoperm.