

ARG23116 anti-CD49d / LPAM1 / Integrin alpha 4 antibody [44H6]

Package: 100 µg
Store at: -20°C

Summary

Product Description	Mouse Monoclonal antibody [44H6] recognizes CD49d / LPAM1 / Integrin alpha 4
Tested Reactivity	Hu
Tested Application	FACS, IHC-Fr
Host	Mouse
Clonality	Monoclonal
Clone	44H6
Isotype	IgG1
Target Name	CD49d / LPAM1 / Integrin alpha 4
Species	Human
Immunogen	HOON pre-B leukaemia cell line.
Conjugation	Un-conjugated
Alternate Names	CD49 antigen-like family member D; VLA-4 subunit alpha; CD49D; Integrin alpha-IV; CD antigen CD49d; Integrin alpha-4; IA4

Application Instructions

Application table	Application	Dilution
	FACS	1:50 - 1:100
	IHC-Fr	Assay-dependent
Application Note	<p>IHC-Fr: Overnight incubation with clone 44H6 is recommended for optimal results. The epitope recognised by this antibody is reported to be sensitive to formaldehyde fixation and tissue processing. Arigo recommends the use of acetone fixation for frozen sections.</p> <p>FACS: Use 10 µl of the suggested working dilution to label 100 µl of human whole peripheral blood.</p> <p>* The dilutions indicate recommended starting dilutions and the optimal dilutions or concentrations should be determined by the scientist.</p>	

Properties

Form	Liquid
Purification	Purified by ion exchange chromatography.
Buffer	PBS and 0.09% Sodium azide
Preservative	0.09% Sodium azide
Concentration	1 mg/ml
Storage instruction	For continuous use, store undiluted antibody at 2-8°C for up to a week. For long-term storage, aliquot and store at -20°C or below. Storage in frost free freezers is not recommended. Avoid repeated freeze/thaw cycles. Suggest spin the vial prior to opening. The antibody solution should be gently mixed

before use.

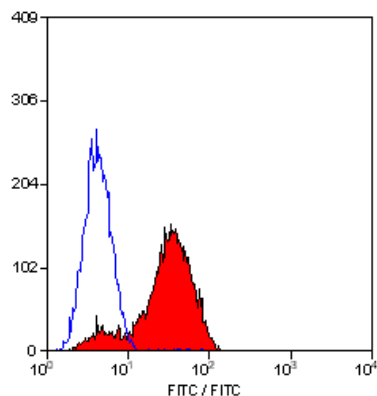
Note

For laboratory research only, not for drug, diagnostic or other use.

Bioinformation

Gene Symbol	ITGA4
Gene Full Name	integrin, alpha 4 (antigen CD49D, alpha 4 subunit of VLA-4 receptor)
Background	The product of this gene belongs to the integrin alpha chain family of proteins. Integrins are heterodimeric integral membrane proteins composed of an alpha chain and a beta chain. This gene encodes an alpha 4 chain. Unlike other integrin alpha chains, alpha 4 neither contains an I-domain, nor undergoes disulfide-linked cleavage. Alpha 4 chain associates with either beta 1 chain or beta 7 chain. [provided by RefSeq, Jul 2008]
Function	Integrins alpha-4/beta-1 (VLA-4) and alpha-4/beta-7 are receptors for fibronectin. They recognize one or more domains within the alternatively spliced CS-1 and CS-5 regions of fibronectin. They are also receptors for VCAM1. Integrin alpha-4/beta-1 recognizes the sequence Q-I-D-S in VCAM1. Integrin alpha-4/beta-7 is also a receptor for MADCAM1. It recognizes the sequence L-D-T in MADCAM1. On activated endothelial cells integrin VLA-4 triggers homotypic aggregation for most VLA-4-positive leukocyte cell lines. It may also participate in cytolytic T-cell interactions with target cells. [UniProt]
Calculated Mw	115 kDa
PTM	Phosphorylation on Ser-1027 inhibits PXN binding.

Images



ARG23116 anti-CD49d / LPAM1 / Integrin alpha 4 antibody [44H6]
FACS image

Flow Cytometry: Human peripheral blood lymphocytes stained with
ARG23116 anti-CD49d / LPAM1 / Integrin alpha 4 antibody [44H6].