

ARG23223 anti-CD49f / Integrin alpha 6 antibody [450-30A] (FITC)

Package: 50 µg
Store at: 4°C

Summary

Product Description	FITC-conjugated Mouse Monoclonal antibody [450-30A] recognizes CD49f / Integrin alpha 6 Mouse anti Human CD49f antibody, clone 450-30A recognizes the human VLA-6 cell surface antigen, also known as the alpha 6 integrin and as CD49f. CD49f is expressed by platelets, weakly by monocytes and by a subset of lymphocytes. CD49f is also widely expressed on epithelial tissues.
Tested Reactivity	Hu
Tested Application	FACS
Host	Mouse
Clonality	Monoclonal
Clone	450-30A
Isotype	IgG1
Target Name	CD49f / Integrin alpha 6
Species	Human
Immunogen	Alpha 6 beta 4 integrin purified from A431 cells.
Conjugation	FITC
Alternate Names	CD49 antigen-like family member F; ITGA6B; Alpha6p; VLA-6; CD antigen CD49f; CD49f; Integrin alpha-6

Application Instructions

Application table	Application	Dilution
	FACS	1:10 - 1:50
Application Note	FACS: Use 10 µl of the suggested working dilution to label 10 ⁶ cells in 100 µl. * The dilutions indicate recommended starting dilutions and the optimal dilutions or concentrations should be determined by the scientist.	

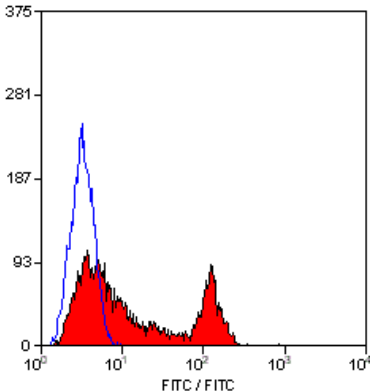
Properties

Form	Liquid
Purification	Purification with Protein G.
Buffer	PBS, 0.09% Sodium azide and 1% BSA.
Preservative	0.09% Sodium azide
Stabilizer	1% BSA
Concentration	0.1 mg/ml
Storage instruction	Aliquot and store in the dark at 2-8°C. Keep protected from prolonged exposure to light. Avoid repeated freeze/thaw cycles. Suggest spin the vial prior to opening. The antibody solution should be gently mixed before use.

Bioinformation

Gene Symbol	ITGA6
Gene Full Name	integrin, alpha 6
Background	<p>The ITGA6 protein product is the integrin alpha chain alpha 6. Integrins are integral cell-surface proteins composed of an alpha chain and a beta chain. A given chain may combine with multiple partners resulting in different integrins. For example, alpha 6 may combine with beta 4 in the integrin referred to as TSP180, or with beta 1 in the integrin VLA-6. Integrins are known to participate in cell adhesion as well as cell-surface mediated signalling. Two transcript variants encoding different isoforms have been found for this gene. [provided by RefSeq, Jul 2008]</p>
Function	<p>Integrin alpha-6/beta-1 is a receptor for laminin on platelets. Integrin alpha-6/beta-4 is a receptor for laminin in epithelial cells and it plays a critical structural role in the hemidesmosome. [UniProt]</p>
Calculated Mw	127 kDa
PTM	<p>Isoforms containing segment A, but not segment B, are the major targets for PMA-induced phosphorylation. Phosphorylation occurs on 'Ser-1103' of isoform alpha-6X1X2A. Phosphorylation is not required for the induction of integrin alpha-6A/beta-1 high affinity but may reduce the affinity for ligand.</p> <p>In invasive prostate cancer ITGA6 undergoes PLAU-mediated cleavage at residues Arg-634-635-Arg in a time-dependent manner enhancing cell invasion and migration in vitro.</p> <p>Palmitoylation by DHHC3 enhances stability and cell surface expression. [UniProt]</p>

Images



ARG23223 anti-CD49f / Integrin alpha 6 antibody [450-30A] (FITC)
FACS image

Flow Cytometry: Human peripheral blood lymphocytes stained with ARG23223 anti-CD49f / Integrin alpha 6 antibody [450-30A] (FITC).