

ARG23224 anti-CD49f / Integrin alpha 6 antibody [450-30A]

Package: 100 µg
Store at: -20°C

Summary

Product Description	Mouse Monoclonal antibody [450-30A] recognizes CD49f / Integrin alpha 6 Mouse anti Human CD49f antibody, clone 450-30A recognizes the human VLA-6 cell surface antigen, also known as the alpha 6 integrin and as CD49f. CD49f is expressed by platelets, weakly by monocytes and by a subset of lymphocytes. CD49f is also widely expressed on epithelial tissues.
Tested Reactivity	Hu
Tested Application	FACS, IHC-Fr, WB
Host	Mouse
Clonality	Monoclonal
Clone	450-30A
Isotype	IgG1
Target Name	CD49f / Integrin alpha 6
Species	Human
Immunogen	Alpha 6 beta 4 integrin purified from A431 cells.
Conjugation	Un-conjugated
Alternate Names	CD49 antigen-like family member F; ITGA6B; Alpha6p; VLA-6; CD antigen CD49f; CD49f; Integrin alpha-6

Application Instructions

Application table	Application	Dilution
	FACS	1:10 - 1:50
	IHC-Fr	1:50 - 1:100
	WB	Assay-dependent
Application Note	<p>IHC-Fr: The epitope recognized by this antibody is reported to be sensitive to formaldehyde fixation and tissue processing. Arigo recommends the use of acetone fixation for frozen sections.</p> <p>FACS: Use 10 µl of the suggested working dilution to label 10⁶ cells in 100 µl.</p> <p>* The dilutions indicate recommended starting dilutions and the optimal dilutions or concentrations should be determined by the scientist.</p>	

Properties

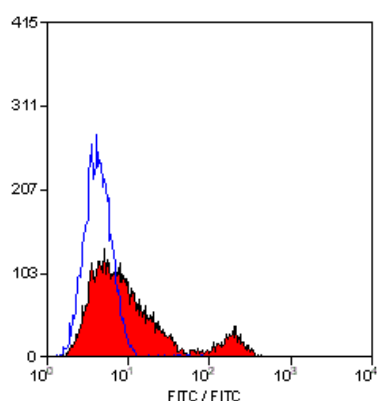
Form	Liquid
Purification	Purification with Protein G.
Buffer	PBS and 0.09% Sodium azide.
Preservative	0.09% Sodium azide
Concentration	1 mg/ml

Storage instruction	For continuous use, store undiluted antibody at 2-8°C for up to a week. For long-term storage, aliquot and store at -20°C or below. Storage in frost free freezers is not recommended. Avoid repeated freeze/thaw cycles. Suggest spin the vial prior to opening. The antibody solution should be gently mixed before use.
Note	For laboratory research only, not for drug, diagnostic or other use.

Bioinformation

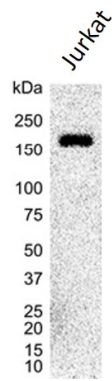
Gene Symbol	ITGA6
Gene Full Name	integrin, alpha 6
Background	The ITGA6 protein product is the integrin alpha chain alpha 6. Integrins are integral cell-surface proteins composed of an alpha chain and a beta chain. A given chain may combine with multiple partners resulting in different integrins. For example, alpha 6 may combine with beta 4 in the integrin referred to as TSP180, or with beta 1 in the integrin VLA-6. Integrins are known to participate in cell adhesion as well as cell-surface mediated signalling. Two transcript variants encoding different isoforms have been found for this gene. [provided by RefSeq, Jul 2008]
Function	Integrin alpha-6/beta-1 is a receptor for laminin on platelets. Integrin alpha-6/beta-4 is a receptor for laminin in epithelial cells and it plays a critical structural role in the hemidesmosome. [UniProt]
Calculated Mw	127 kDa
PTM	<p>Isoforms containing segment A, but not segment B, are the major targets for PMA-induced phosphorylation. Phosphorylation occurs on 'Ser-1103' of isoform alpha-6X1X2A. Phosphorylation is not required for the induction of integrin alpha-6A/beta-1 high affinity but may reduce the affinity for ligand.</p> <p>In invasive prostate cancer ITGA6 undergoes PLAU-mediated cleavage at residues Arg-634-635-Arg in a time-dependent manner enhancing cell invasion and migration in vitro.</p> <p>Palmitoylation by DHHC3 enhances stability and cell surface expression. [UniProt]</p>

Images



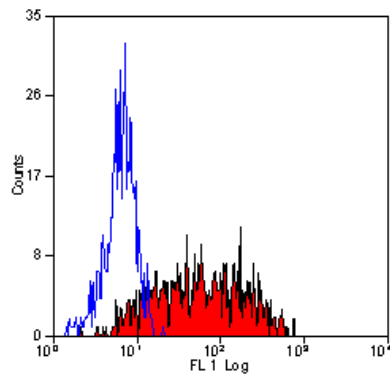
ARG23224 anti-CD49f / Integrin alpha 6 antibody [450-30A] FACS image

Flow Cytometry: Human peripheral blood lymphocytes stained with ARG23224 anti-CD49f / Integrin alpha 6 antibody [450-30A].



ARG23224 anti-CD49f / Integrin alpha 6 antibody [450-30A] WB image

Western blot: Jurkat whole cell lysate stained with ARG23224 anti-CD49f / Integrin alpha 6 antibody [450-30A].



ARG23224 anti-CD49f / Integrin alpha 6 antibody [450-30A] FACS image

Flow Cytometry: Human peripheral blood monocytes stained with ARG23224 anti-CD49f / Integrin alpha 6 antibody [450-30A].