

ARG23285 anti-Talin 2 antibody [53.8]

Package: 100 µg
Store at: -20°C

Summary

Product Description	Mouse Monoclonal antibody [53.8] recognizes Talin 2
Tested Reactivity	Hu, Ms, Rb
Tested Application	ICC/IF, IHC-Fr, IHC-P, IP, WB
Host	Mouse
Clonality	Monoclonal
Clone	53.8
Isotype	IgG2b
Target Name	Talin 2
Species	Human
Immunogen	Recombinant Mouse Talin 2. (aa. 2300-2542)
Conjugation	Un-conjugated
Alternate Names	Talin-2; ILWEQ

Application Instructions

Application table	Application	Dilution
	ICC/IF	Assay-dependent
	IHC-Fr	Assay-dependent
	IHC-P	1:25 - 1:100
	IP	Assay-dependent
	WB	Assay-dependent
Application Note	ICC/IF: Methanol treatment is required prior to antibody staining. * The dilutions indicate recommended starting dilutions and the optimal dilutions or concentrations should be determined by the scientist.	

Properties

Form	Liquid
Purification	Purification with Protein G.
Buffer	PBS and 0.09% Sodium azide.
Preservative	0.09% Sodium azide
Concentration	1 mg/ml
Storage instruction	For continuous use, store undiluted antibody at 2-8°C for up to a week. For long-term storage, aliquot and store at -20°C or below. Storage in frost free freezers is not recommended. Avoid repeated

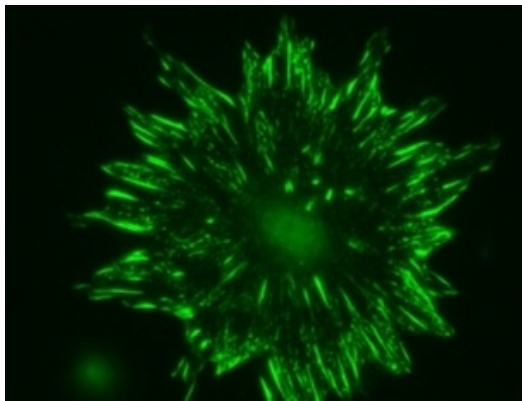
freeze/thaw cycles. Suggest spin the vial prior to opening. The antibody solution should be gently mixed before use.

Note For laboratory research only, not for drug, diagnostic or other use.

Bioinformation

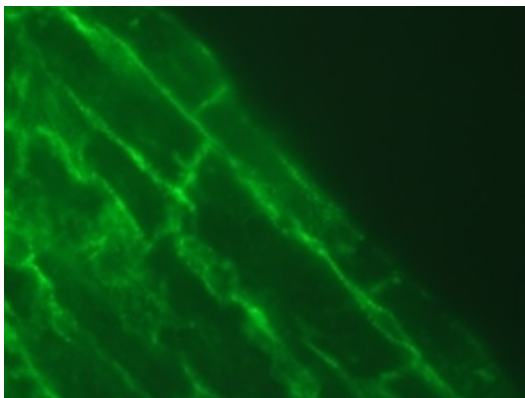
Gene Symbol	TLN2
Gene Full Name	talin 2
Background	This gene encodes a protein related to talin 1, a cytoskeletal protein that plays a significant role in the assembly of actin filaments and in spreading and migration of various cell types, including fibroblasts and osteoclasts. This protein has a different pattern of expression compared to talin 1 but, like talin 1, is thought to associate with unique transmembrane receptors to form novel linkages between extracellular matrices and the actin cytoskeleton. [provided by RefSeq, Jul 2008]
Function	As a major component of focal adhesion plaques that links integrin to the actin cytoskeleton, may play an important role in cell adhesion. Recruits PIP5K1C to focal adhesion plaques and strongly activates its kinase activity (By similarity). [UniProt]
Calculated Mw	272 kDa

Images



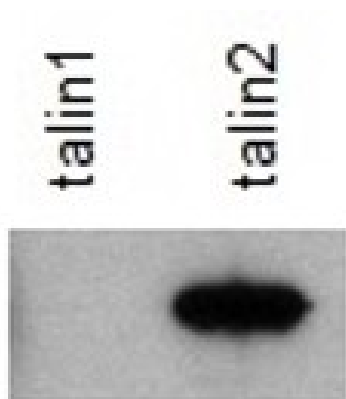
ARG23285 anti-Talin 2 antibody [53.8] ICC/IF image

Immunofluorescence: ARG23285 anti-Talin 2 antibody [53.8] used for immunofluorescent staining of isolated talin-1 null cells fixed in paraformaldehyde and permeablized with triton X-100.



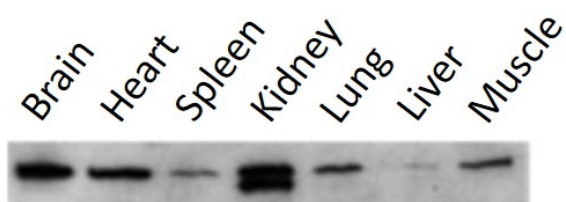
ARG23285 anti-Talin 2 antibody [53.8] IHC-Fr image

Immunohistochemistry: Frozen section of murine heart stained with ARG23285 anti-Talin 2 antibody [53.8].



ARG23285 anti-Talin 2 antibody [53.8] WB image

Western blot: Recombinant talin1 and talin2 proteins stained with ARG23285 anti-Talin 2 antibody [53.8].



ARG23285 anti-Talin 2 antibody [53.8] WB image

Western blot: Murine tissue lysates: Brain, heart, spleen, kidney, lung, liver and muscle lysates stained with ARG23285 anti-Talin 2 antibody [53.8].