

ARG23416 anti-CD2 antibody [Mac288]

Package: 1 ml
Store at: -20°C

Summary

Product Description	Rat Monoclonal antibody [Mac288] recognizes CD2 Rat anti Horse CD2 antibody, clone Mac288 recognizes equine CD2, a 347 amino acid, single pass type-1 transmembrane glycoprotein containing single Ig-like C2-type and Ig-like V-type domains. Equine CD2 is expressed by a large proportion of peripheral blood lymphocytes, most T-cells and few B-cells, it is not present on granulocytes. Immunohistochemical staining shows expression in most T cells of lymph node paracortex and occasional staining of lymphocytes in the follicular areas. In the thymus, rat anti horse CD2 antibody, clone Mac288 stains the majority of mature thymocytes in the medulla and at least half of the immature thymocytes in the cortex (Kydd et al. 1994). Rat anti Horse CD2 antibody, clone Mac288 recognizes CD2 in Haflinger (Üner et al. 2013) and Lusitano horse breeds (Ferreira-Dias et al. 2005). Rat anti Horse CD2 antibody, clone Mac288 is a reliable pan T-cell marker for analysis of cell mediated immunity in horses infected with equine herpes virus by multi-parameter flow cytometry (Platt et al. 2010).
Tested Reactivity	Hrs, Pig
Tested Application	FACS, IHC-Fr
Host	Rat
Clonality	Monoclonal
Clone	Mac288
Isotype	IgG2a
Target Name	CD2
Species	Horse
Immunogen	Equine peripheral blood lymphocytes.
Conjugation	Un-conjugated
Alternate Names	T-cell surface antigen T11/Leu-5; LFA-3 receptor; T-cell surface antigen CD2; SRBC; Erythrocyte receptor; CD antigen CD2; T11; Rosette receptor; LFA-2

Application Instructions

Application table	Application	Dilution
	FACS	1:200
	IHC-Fr	Assay-dependent
Application Note	FACS: Use 50 µl of the suggested working dilution to label 7.5×10^5 cells in 100 µl. * The dilutions indicate recommended starting dilutions and the optimal dilutions or concentrations should be determined by the scientist.	

Properties

Form	Liquid
Purification	Tissue Culture Supernatant.

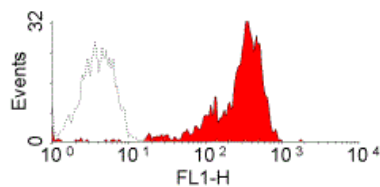
Buffer	Tissue Culture Supernatant and 0.1% Sodium azide.
Preservative	0.1% Sodium azide
Storage instruction	For continuous use, store undiluted antibody at 2-8°C for up to a week. For long-term storage, aliquot and store at -20°C or below. Storage in frost free freezers is not recommended. Avoid repeated freeze/thaw cycles. Suggest spin the vial prior to opening. The antibody solution should be gently mixed before use.
Note	For laboratory research only, not for drug, diagnostic or other use.

Bioinformation

Gene Symbol	CD2
Gene Full Name	CD2 molecule
Background	CD2 is a surface antigen of the human T-lymphocyte lineage that is expressed on all peripheral blood T cells (summarized by Sewell et al., 1986 [PubMed 3490670]). It is one of the earliest T-cell markers, being present on more than 95% of thymocytes; it is also found on some natural killer cells but not on B lymphocytes. Monoclonal antibodies directed against CD2 inhibit the formation of rosettes with sheep erythrocytes, indicating that CD2 is the erythrocyte receptor or is closely associated with it.[supplied by OMIM, Jul 2010]
Function	CD2 interacts with lymphocyte function-associated antigen (LFA-3) and CD48/BCM1 to mediate adhesion between T-cells and other cell types. CD2 is implicated in the triggering of T-cells, the cytoplasmic domain is implicated in the signaling function. [UniProt]
Calculated Mw	39 kDa

Images

ARG23416 anti-CD2 antibody [Mac288] FACS image



Flow Cytometry: Equine peripheral blood lymphocytes stained with ARG23416 anti-CD2 antibody [Mac288], visualised with Rabbit anti Rat IgG (FITC).