

## ARG23602 anti-GDNF Receptor alpha 1 antibody

Package: 50 µg  
Store at: -20°C

### Summary

Product Description	Rabbit Polyclonal antibody recognizes GDNF Receptor alpha 1
Tested Reactivity	Hu
Tested Application	IHC-P, WB
Specificity	GFR alpha 1 antibody is predicted to not cross-react with other members of the GFR alpha family of proteins.
Host	Rabbit
Clonality	Polyclonal
Isotype	IgG
Target Name	GDNF Receptor alpha 1
Species	Human
Immunogen	Synthetic peptide around 14 aa (Center) of Human GDNF receptor alpha 1.
Conjugation	Un-conjugated
Alternate Names	GDNFR-alpha-1; GDNFRA; GFR-ALPHA-1; RET ligand 1; GFR-alpha-1; RETL1; GDNF receptor alpha-1; TRNR1; TGF-beta-related neurotrophic factor receptor 1; RETL1; GDNFR; GDNF family receptor alpha-1

### Application Instructions

Application table	Application	Dilution
	IHC-P	1 µg/ml
	WB	1 µg/ml
Application Note	* The dilutions indicate recommended starting dilutions and the optimal dilutions or concentrations should be determined by the scientist.	
Positive Control	Human Brain	

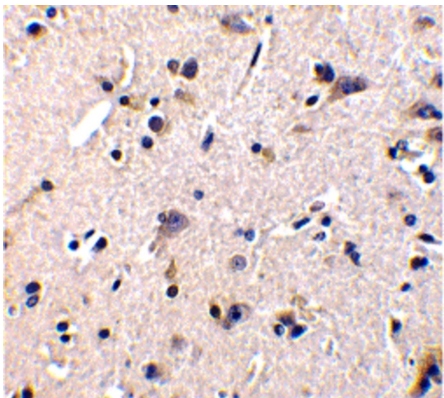
### Properties

Form	Liquid
Purification	DEAE purified.
Buffer	PBS and 0.02% Sodium azide
Preservative	0.02% Sodium azide
Concentration	1 mg/ml
Storage instruction	For continuous use, store undiluted antibody at 2-8°C for up to a week. For long-term storage, aliquot and store at -20°C or below. Storage in frost free freezers is not recommended. Avoid repeated freeze/thaw cycles. Suggest spin the vial prior to opening. The antibody solution should be gently mixed before use.

Bioinformation

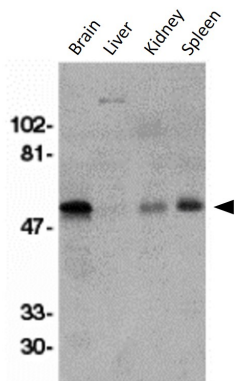
Gene Symbol	GFRA1
Gene Full Name	GDNF family receptor alpha 1
Background	Glial cell line-derived neurotrophic factor (GDNF) and neurturin (NTN) are two structurally related, potent neurotrophic factors that play key roles in the control of neuron survival and differentiation. The protein encoded by this gene is a member of the GDNF receptor family. It is a glycosylphosphatidylinositol(GPI)-linked cell surface receptor for both GDNF and NTN, and mediates activation of the RET tyrosine kinase receptor. This gene is a candidate gene for Hirschsprung disease. Multiple alternatively spliced transcript variants have been described for this gene. [provided by RefSeq, Feb 2009]
Function	Receptor for GDNF. Mediates the GDNF-induced autophosphorylation and activation of the RET receptor (By similarity). [UniProt]
Calculated Mw	51 kDa

Images



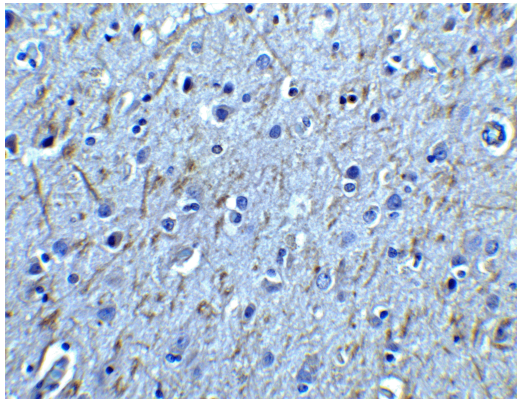
ARG23602 anti-GDNF Receptor alpha 1 antibody IHC-P image

Immunohistochemistry: Human brain tissue stained with ARG23602 anti-GDNF Receptor alpha 1 antibody at 1 µg/ml dilution.



ARG23602 anti-GDNF Receptor alpha 1 antibody WB image

Western blot: Crude membrane fractions of Human brain, liver, kidney, and spleen lysates stained with ARG23602 anti-GDNF Receptor alpha 1 antibody at 1 µg/ml dilution.



ARG23602 anti-GDNF Receptor alpha 1 antibody IHC-P image

Immunohistochemistry: Human brain tissue stained with ARG23602 anti-GDNF Receptor alpha 1 antibody at 2.5 µg/ml dilution.