

## ARG23605 anti-M13 Bacteriophage g3p coat protein antibody [E1]

Package: 100 µg  
Store at: -20°C

### Summary

|                     |  |
|---------------------|--|
| Product Description | Mouse Monoclonal antibody [E1] recognizes M13 Bacteriophage g3p coat protein. This product recognizes the gp3 (G3P) phage coat protein of the M13 bacteriophage widely used in the preparation of "phage-display" immunoglobulin libraries. G3P plays a role in the entry of the viral genome into the bacterial host. This antibody may be used to detect binding of ScFv antibodies developed in the M13 system. |
| Tested Reactivity   | Virus  |
| Tested Application  | ELISA, FACS, IHC-Fr  |
| Host                | Mouse  |
| Clonality           | Monoclonal   |
| Clone               | E1   |
| Isotype             | IgG2a  |
| Target Name         | M13 Bacteriophage g3p coat protein   |
| Species             | Virus  |
| Immunogen           | M13 Phage coat proteins.   |
| Conjugation         | Un-conjugated  |
| Alternate Names     | Coat protein A; g3p; Minor coat protein; pIII; M13 antibody (g3p); Attachment protein G3P  |

### Application Instructions

| Application table | Application   | Dilution        |
|-------------------|---|-----------------|
|                   | ELISA   | 1 - 5 µg/ml     |
|                   | FACS  | Assay-dependent |
|                   | IHC-Fr  | Assay-dependent |
|                   |   |                 |
| Application Note  | FACS: Use 10 µl of the suggested working dilution to label 10 <sup>6</sup> cells in 100 µl.<br>* The dilutions indicate recommended starting dilutions and the optimal dilutions or concentrations should be determined by the scientist. |                 |

### Properties

|                     |  |
|---------------------|--|
| Form                | Liquid   |
| Purification        | Purified   |
| Buffer              | PBS and 0.09% Sodium azide.  |
| Preservative        | 0.09% Sodium azide   |
| Concentration       | 0.5 mg/ml  |
| Storage instruction | For continuous use, store undiluted antibody at 2-8°C for up to a week. For long-term storage, aliquot |

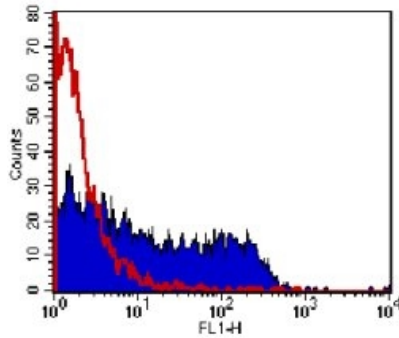
and store at -20°C or below. Storage in frost free freezers is not recommended. Avoid repeated freeze/thaw cycles. Suggest spin the vial prior to opening. The antibody solution should be gently mixed before use.

**Note**

For laboratory research only, not for drug, diagnostic or other use.

## Images

---



**ARG23605 anti-M13 Bacteriophage g3p coat protein antibody [E1]  
FACS image**

Flow Cytometry: Colo320 cell line stained with a cell-line specific M13 phage antibody (filled profile), compared to an irrelevant phage antibody (open profile). Cells were incubated overnight with 1012 phage particles, then detected with 10 µg/ml ARG23605 anti-M13 Bacteriophage g3p coat protein antibody [E1] followed by Rabbit anti-Mouse IgG (FITC).