

ARG23636 anti-CD273 / PD-L2 antibody [MIH14]

Package: 100 µg
Store at: -20°C

Summary

Product Description	Mouse Monoclonal antibody [MIH14] recognizes CD273 / PD-L2. This product detects human CD273, also known as B7-DC and Programmed Death Ligand 2 (PD-L2). CD273 is a ~42 kDa member of the immunoglobulin receptor superfamily, and is a ligand for CD279 (PD-1). CD273 is primarily expressed on dendritic cells, and its expression can be induced on inflammatory macrophages when activated by interleukin 4 or Th2 cells. CD273 functions to inhibit T-cell proliferation by blocking cell cycle progression and cytokine production, and is particularly important in the maintenance of self tolerance.
Tested Reactivity	Hu
Tested Application	FACS, IHC-Fr
Host	Mouse
Clonality	Monoclonal
Clone	MIH14
Isotype	IgG1
Target Name	CD273 / PD-L2
Antigen Species	Human
Immunogen	Human PD-L2 transfected L cells.
Conjugation	Un-conjugated
Alternate Names	B7DC; bA574F11.2; PDL2; CD antigen CD273; PD-L2; Programmed cell death 1 ligand 2; CD273; Btdc; PDCD1L2; Programmed death ligand 2; Butyrophilin B7-DC; B7-DC; PD-1 ligand 2; PDCD1 ligand 2

Application Instructions

Application table	<table> <tr> <th>Application</th><th>Dilution</th></tr> <tr> <td>FACS</td><td>neat - 1:5</td></tr> <tr> <td>IHC-Fr</td><td>Assay-dependent</td></tr> </table>	Application	Dilution	FACS	neat - 1:5	IHC-Fr	Assay-dependent
Application	Dilution						
FACS	neat - 1:5						
IHC-Fr	Assay-dependent						
Application Note	FACS: Use 10 µl of the suggested working dilution to label 10 ⁶ cells in 100 µl. * The dilutions indicate recommended starting dilutions and the optimal dilutions or concentrations should be determined by the scientist.						

Properties

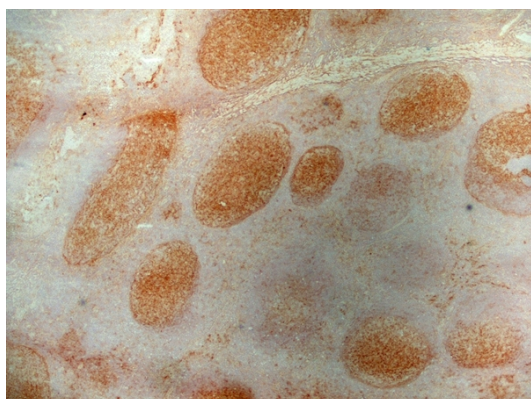
Form	Liquid
Purification	Purification with Protein G.
Buffer	PBS and 0.09% Sodium azide.
Preservative	0.09% Sodium azide
Concentration	1 mg/ml

Storage instruction	For continuous use, store undiluted antibody at 2-8°C for up to a week. For long-term storage, aliquot and store at -20°C or below. Storage in frost free freezers is not recommended. Avoid repeated freeze/thaw cycles. Suggest spin the vial prior to opening. The antibody solution should be gently mixed before use.
Note	For laboratory research only, not for drug, diagnostic or other use.

Bioinformation

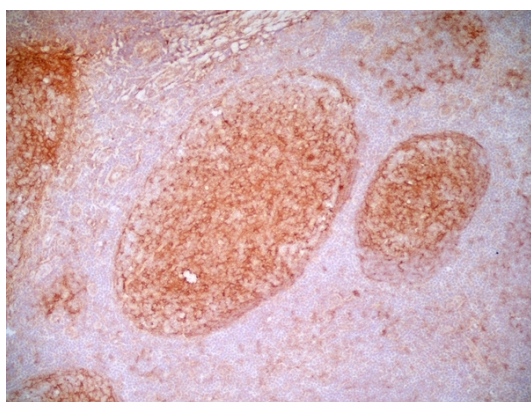
Gene Symbol	PDCD1LG2
Gene Full Name	programmed cell death 1 ligand 2
Function	Involved in the costimulatory signal, essential for T-cell proliferation and IFNG production in a PDCD1-independent manner. Interaction with PDCD1 inhibits T-cell proliferation by blocking cell cycle progression and cytokine production (By similarity). [UniProt]
Highlight	<p>Related products:</p> <p>Anti-Mouse IgG secondary antibodies:</p> <p>Related news:</p> <p>New PD-1 ELISA Kit, excellent for preclinical studies or pharmaceutical development</p> <p>Why anti-PD-1/PD-L1 therapy doesn't work?</p> <p>Time to fight cancer by NK cells</p>

Images



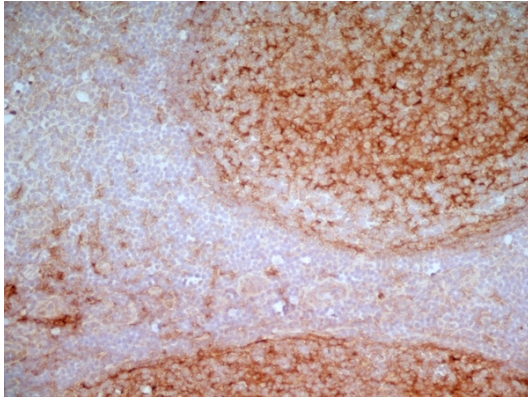
ARG23636 anti-CD273 / PD-L2 antibody [MIH14] IHC-Fr image

Immunohistochemistry: Immunoperoxidase staining of Human tonsil cryosection with ARG23636 anti-CD273 / PD-L2 antibody [MIH14]. (Low power).



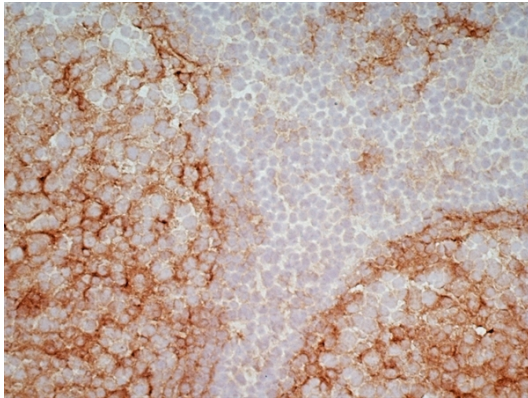
ARG23636 anti-CD273 / PD-L2 antibody [MIH14] IHC-Fr image

Immunohistochemistry: Immunoperoxidase staining of Human tonsil cryosection with ARG23636 anti-CD273 / PD-L2 antibody [MIH14]. (Medium power).



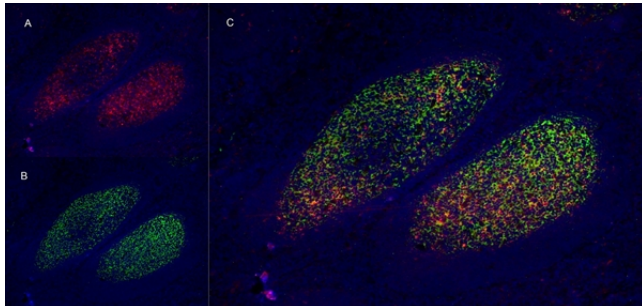
ARG23636 anti-CD273 / PD-L2 antibody [MIH14] IHC-Fr image

Immunohistochemistry: Immunoperoxidase staining of Human tonsil cryosection with ARG23636 anti-CD273 / PD-L2 antibody [MIH14]. (High power).



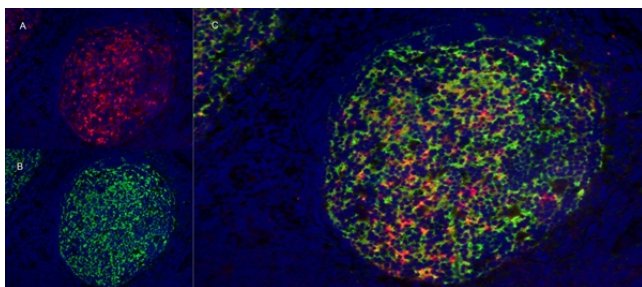
ARG23636 anti-CD273 / PD-L2 antibody [MIH14] IHC-Fr image

Immunohistochemistry: Immunoperoxidase staining of Human tonsil cryosection with ARG23636 anti-CD273 / PD-L2 antibody [MIH14]. (High power).



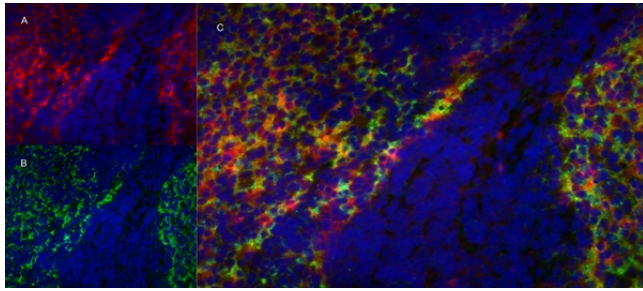
ARG23636 anti-CD273 / PD-L2 antibody [MIH14] IHC-Fr image

Immunohistochemistry: Immunofluorescence staining of Human tonsil cryosection with ARG23636 anti-CD273 / PD-L2 antibody [MIH14], red in A. ARG22907 anti-CD21 antibody [LB21], green in B. C is the merged image with nuclei counterstained blue using DAPI. (Low power).



ARG23636 anti-CD273 / PD-L2 antibody [MIH14] IHC-Fr image

Immunohistochemistry: Immunofluorescence staining of Human tonsil cryosection with ARG23636 anti-CD273 / PD-L2 antibody [MIH14], red in A. ARG22907 anti-CD21 antibody [LB21], green in B. C is the merged image with nuclei counterstained blue using DAPI. (Medium power).



ARG23636 anti-CD273 / PD-L2 antibody [MIH14] IHC-Fr image

Immunohistochemistry: Immunofluorescence staining of Human tonsil cryosection with ARG23636 anti-CD273 / PD-L2 antibody [MIH14], red in A. ARG22907 anti-CD21 antibody [LB21], green in B. C is the merged image with nuclei counterstained blue using DAPI. (High power).