

ARG23749 Goat anti-Rat Ig antibody (FITC), pre-adsorbed

Package: 500 µg
Store at: 4°C

Summary

Product Description	FITC-conjugated Goat Polyclonal antibody recognizes Rat Ig
Tested Reactivity	Rat
Tested Application	ELISA, FACS, FLISA, ICC/IF, IHC-Fr, WB
Specificity	Reacts with the heavy and light chains of rat IgM and IgG as demonstrated by ELISA, FLISA, and/or flow cytometry. Minimal cross reactivity with mouse immunoglobulins. May react with other species.
Host	Goat
Clonality	Polyclonal
Isotype	IgG
Target Name	Ig
Species	Rat
Conjugation	FITC

Application Instructions

Pre Adsorbed	Mouse immunoglobulins and pooled sera.	
Application table	Application	Dilution
	ELISA	Assay-dependent
	FACS	< 1 µg/10 ⁶ cells
	FLISA	1:100 - 1:400
	ICC/IF	Assay-dependent
	IHC-Fr	Assay-dependent
	WB	Assay-dependent
Application Note	* The dilutions indicate recommended starting dilutions and the optimal dilutions or concentrations should be determined by the scientist.	

Properties

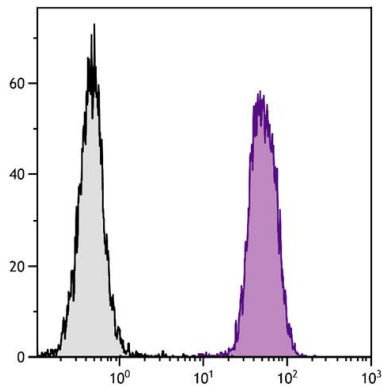
Form	Liquid
Purification	Affinity purification with immunogen.
Buffer	PBS and 0.1% Sodium azide.
Preservative	0.1% Sodium azide
Concentration	1 mg/ml
Storage instruction	Aliquot and store in the dark at 2-8°C. Keep protected from prolonged exposure to light. Avoid repeated freeze/thaw cycles. Suggest spin the vial prior to opening. The antibody solution should be

gently mixed before use.

Note

For laboratory research only, not for drug, diagnostic or other use.

Images



ARG23749 Goat anti-Rat Ig antibody (FITC), pre-adsorbed FACS image

Flow Cytometry: BALB/c Mouse splenocytes were stained with ARG23749 Goat anti-Rat Ig antibody (FITC), pre-adsorbed followed by ARG23749 Goat anti-Rat Ig antibody (FITC), pre-adsorbed.