

ARG23752
Mouse anti-Rabbit IgG antibody [2A9] (PE)Package: 50 µg
Store at: 4°C

Summary

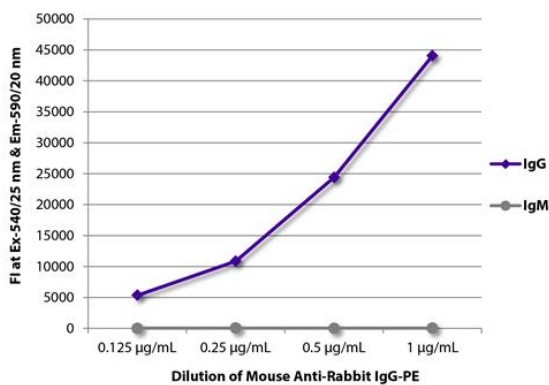
Product Description	PE-conjugated Mouse Monoclonal antibody [2A9] recognizes Rabbit IgG
Tested Reactivity	Rb
Tested Application	FACS, FLISA, IHC-P, WB
Host	Mouse
Clonality	Monoclonal
Clone	2A9
Isotype	IgG1
Target Name	IgG
Species	Rabbit
Conjugation	PE

Application Instructions

Application table	Application	Dilution
	FACS	< 0.3 µg/10 ⁶ cells
	FLISA	< 1 µg/ml
	IHC-P	Assay-dependent
	WB	Assay-dependent
Application Note	* The dilutions indicate recommended starting dilutions and the optimal dilutions or concentrations should be determined by the scientist.	

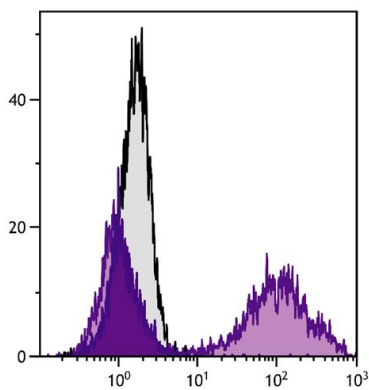
Properties

Form	Liquid
Buffer	PBS, 0.1% Sodium azide and Sucrose.
Preservative	0.1% Sodium azide
Stabilizer	Sucrose
Concentration	0.1 mg/ml
Storage instruction	Aliquot and store in the dark at 2-8°C. Keep protected from prolonged exposure to light. Avoid repeated freeze/thaw cycles. Suggest spin the vial prior to opening. The antibody solution should be gently mixed before use.
Note	For laboratory research only, not for drug, diagnostic or other use.



ARG23752 Mouse anti-Rabbit IgG antibody [2A9] (PE) FLISA image

FLISA: The plate was coated with purified rabbit IgG and IgM. Immunoglobulins were detected with serially diluted ARG23752 Mouse anti-Rabbit IgG antibody [2A9] (PE).



ARG23752 Mouse anti-Rabbit IgG antibody [2A9] (PE) FACS image

Flow Cytometry: BALB/c Mouse splenocytes stained with Rabbit anti-Mouse IgM antibody followed by ARG23752 Mouse anti-Rabbit IgG antibody [2A9] (PE).