

## ARG23762 Goat anti-Rat Ig antibody (PE), pre-adsorbed

Package: 125 µg  
Store at: 4°C

### Summary

Product Description	PE-conjugated Goat Polyclonal antibody recognizes Rat Ig
Tested Reactivity	Rat
Tested Application	ELISA, FACS, FLISA, ICC/IF, IHC-Fr, WB
Specificity	Reacts with the heavy and light chains of rat IgM and IgG as demonstrated by ELISA, FLISA, and/or flow cytometry. Minimal cross reactivity with mouse immunoglobulins. May react with other species.
Host	Goat
Clonality	Polyclonal
Isotype	IgG
Target Name	Ig
Species	Rat
Conjugation	PE

### Application Instructions

Pre Adsorbed	Mouse immunoglobulins and pooled sera.	
Application table	Application	Dilution
	ELISA	Assay-dependent
	FACS	< 0.1 µg/10 <sup>6</sup> cells
	FLISA	< 1 µg/ml
	ICC/IF	Assay-dependent
	IHC-Fr	Assay-dependent
	WB	Assay-dependent
Application Note	* The dilutions indicate recommended starting dilutions and the optimal dilutions or concentrations should be determined by the scientist.	

### Properties

Form	Liquid
Purification	Affinity purification with immunogen.
Buffer	PBS, 0.1% Sodium azide and Sucrose.
Preservative	0.1% Sodium azide
Stabilizer	Sucrose
Concentration	0.5 mg/ml

**Storage instruction**

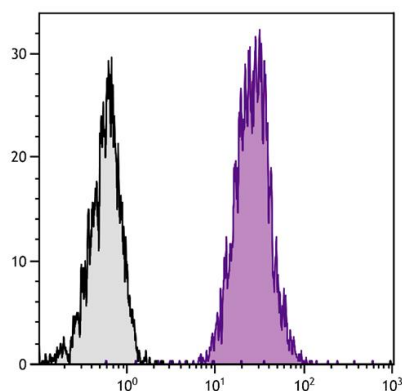
Aliquot and store in the dark at 2-8°C. Keep protected from prolonged exposure to light. Avoid repeated freeze/thaw cycles. Suggest spin the vial prior to opening. The antibody solution should be gently mixed before use.

**Note**

For laboratory research only, not for drug, diagnostic or other use.

**Images**

---



ARG23762 Goat anti-Rat Ig antibody (PE), pre-adsorbed FACS image

Flow Cytometry: BALB/c Mouse splenocytes were stained with ARG20565 anti-CD45 antibody [I3/2.3] followed by ARG23762 Goat anti-Rat Ig antibody (PE), pre-adsorbed.