

ARG23776 Goat anti-Mouse IgA + IgG + IgM antibody (FITC), pre-adsorbed

Package: 500 µg
Store at: 4°C

Summary

Product Description	FITC-conjugated Goat Polyclonal antibody recognizes Mouse IgA + IgG + IgM
Tested Reactivity	Ms
Tested Application	ELISA, FACS, FLISA, ICC/IF, IHC-Fr, IHC-P, WB
Specificity	Reacts with the heavy and light chains of mouse IgM, IgG1, IgG2a, IgG2b, IgG3 and IgA as demonstrated by ELISA, FLISA, and/or flow cytometry; minimal cross reactivity with human immunoglobulins
Host	Goat
Clonality	Polyclonal
Isotype	IgG
Target Name	IgA + IgG + IgM
Species	Mouse
Conjugation	FITC

Application Instructions

Pre Adsorbed	Human immunoglobulins and pooled sera.	
Application table	Application	Dilution
	ELISA	Assay-dependent
	FACS	< 1 µg/10 ⁶ cells
	FLISA	1:100 - 1:400
	ICC/IF	Assay-dependent
	IHC-Fr	Assay-dependent
	IHC-P	Assay-dependent
	WB	Assay-dependent
Application Note	* The dilutions indicate recommended starting dilutions and the optimal dilutions or concentrations should be determined by the scientist.	

Properties

Form	Liquid
Purification	Affinity purification with immunogen.
Buffer	PBS and 0.1% Sodium azide.
Preservative	0.1% Sodium azide
Concentration	1 mg/ml

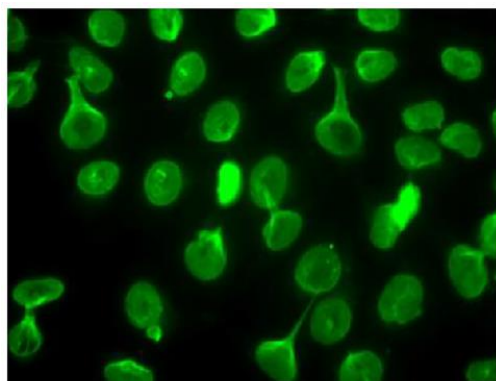
Storage instruction

Aliquot and store in the dark at 2-8°C. Keep protected from prolonged exposure to light. Avoid repeated freeze/thaw cycles. Suggest spin the vial prior to opening. The antibody solution should be gently mixed before use.

Note

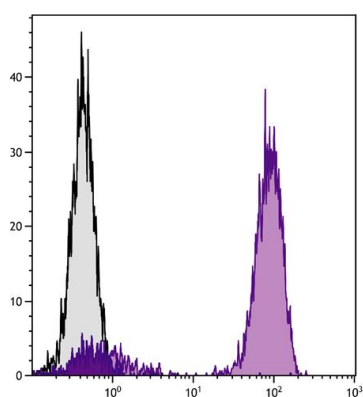
For laboratory research only, not for drug, diagnostic or other use.

Images



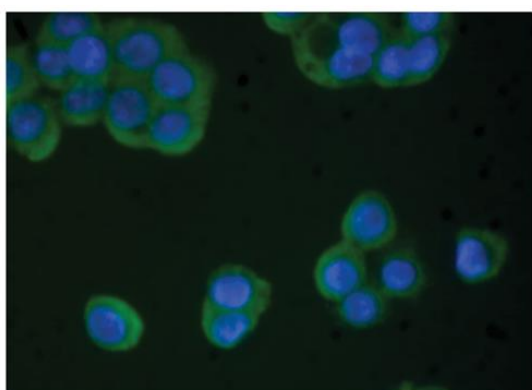
ARG23776 Goat anti-Mouse IgA + IgG + IgM antibody (FITC) (pre-adsorbed) ICC/IF image

Immunofluorescence: HEp-2 cells were stained with female F1 Mouse serum followed by ARG23776 Goat anti-Mouse IgA + IgG + IgM antibody (FITC) (pre-adsorbed).



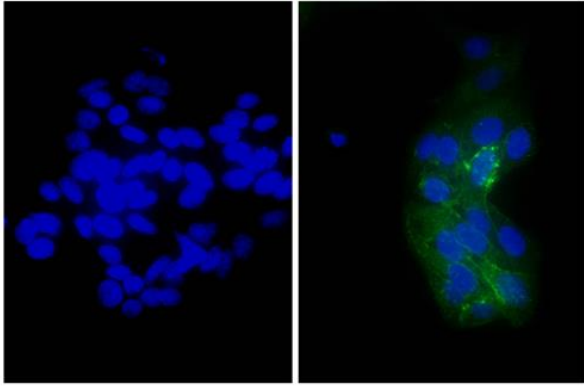
ARG23776 Goat anti-Mouse IgA + IgG + IgM antibody (FITC) (pre-adsorbed) FACS image

Flow Cytometry: Human peripheral blood lymphocytes were stained with Mouse anti-Human CD3 followed by ARG23776 Goat anti-Mouse IgA + IgG + IgM antibody (FITC) (pre-adsorbed).



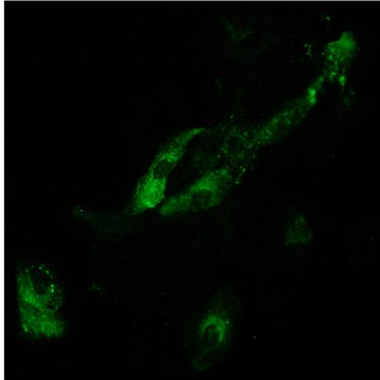
ARG23776 Goat anti-Mouse IgA + IgG + IgM antibody (FITC) (pre-adsorbed) ICC/IF image

Immunofluorescence: Human pancreatic carcinoma cells were stained with ARG22193 anti-TIMP4 antibody [SB30c] followed by ARG23776 Goat anti-Mouse IgA + IgG + IgM antibody (FITC) (pre-adsorbed).



ARG23776 Goat anti-Mouse IgA + IgG + IgM antibody (FITC) (pre-adsorbed) ICC/IF image

Immunofluorescence: Human epithelial carcinoma cell line HEP-2 was stained with Mouse anti-Human CD44 (right) followed by ARG23776 Goat anti-Mouse IgA + IgG + IgM antibody (FITC) (pre-adsorbed) and DAPI.



ARG23776 Goat anti-Mouse IgA + IgG + IgM antibody (FITC) (pre-adsorbed) ICC/IF image

Immunofluorescence: Infectious salmon anemia virus (ISAV) infected primary gill epithelial cells were stained with anti-ISAV haemagglutinin esterase followed by ARG23776 Goat anti-Mouse IgA + IgG + IgM antibody (FITC) (pre-adsorbed).