

ARG23834 Mouse anti-Rat Kappa Light Chain antibody [K4F5] (PE)

Package: 50 µg
Store at: 4°C

Summary

| | |
|---------------------|---|
| Product Description | PE-conjugated Mouse Monoclonal antibody [K4F5] recognizes Rat Kappa Light Chain |
| Tested Reactivity | Rat |
| Tested Application | ELISA, FACS, FLISA, IHC-Fr, WB |
| Host | Mouse |
| Clonality | Monoclonal |
| Clone | K4F5 |
| Isotype | IgG2a, kappa |
| Target Name | Kappa Light Chain |
| Species | Rat |
| Immunogen | Rat Kappa hybridoma |
| Conjugation | PE |

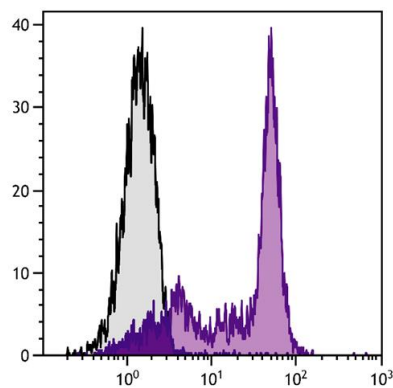
Application Instructions

| Application table | Application | Dilution |
|-------------------|--|--------------------------------|
| | ELISA | Assay-dependent |
| | FACS | < 0.1 µg/10 ⁶ cells |
| | FLISA | < 1 µg/ml |
| | IHC-Fr | Assay-dependent |
| | WB | Assay-dependent |
| Application Note | * The dilutions indicate recommended starting dilutions and the optimal dilutions or concentrations should be determined by the scientist. | |

Properties

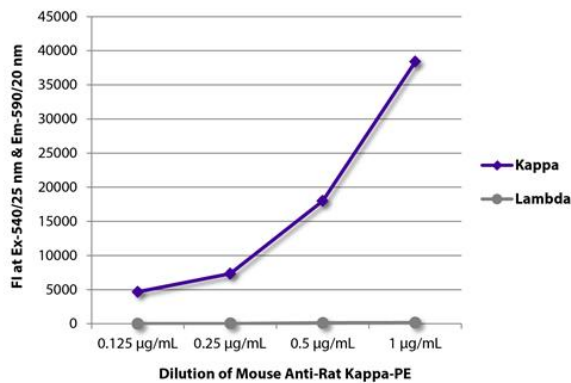
| | |
|---------------------|--|
| Form | Liquid |
| Buffer | PBS, 0.1% Sodium azide and Sucrose. |
| Preservative | 0.1% Sodium azide |
| Stabilizer | Sucrose |
| Concentration | 0.1 mg/ml |
| Storage instruction | Aliquot and store in the dark at 2-8°C. Keep protected from prolonged exposure to light. Avoid repeated freeze/thaw cycles. Suggest spin the vial prior to opening. The antibody solution should be gently mixed before use. |

Images



ARG23834 Mouse anti-Rat Kappa Light Chain antibody [K4F5] (PE)
FACS image

Flow Cytometry: BALB/c Mouse splenocytes were stained with ARG22038 anti-CD45RC antibody [GL24] followed by ARG23834 Mouse anti-Rat Kappa Light Chain antibody [K4F5] (PE).



ARG23834 Mouse anti-Rat Kappa Light Chain antibody [K4F5] (PE)
FLISA image

FLISA: FLISA plate was coated with purified Rat IgG1κ, IgG2aλ, IgG2aλ, IgG2bκ, IgG2bλ, IgG2cκ, IgMκ, and IgMλ. Immunoglobulins were detected with serially diluted ARG23834 Mouse anti-Rat Kappa Light Chain antibody [K4F5] (PE).