

ARG23835 Mouse anti-Rat IgM antibody [M2A1] (FITC)

Package: 250 µg
Store at: 4°C

Summary

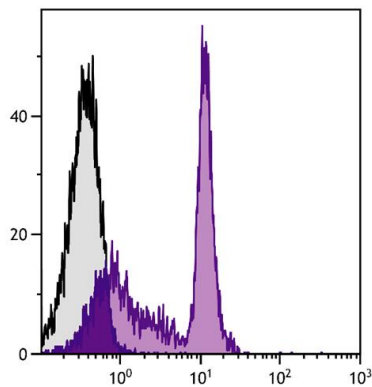
Product Description	FITC-conjugated Mouse Monoclonal antibody [M2A1] recognizes Rat IgM
Tested Reactivity	Rat
Tested Application	ELISA, FACS, FLISA, ICC/IF, IHC-Fr
Host	Mouse
Clonality	Monoclonal
Clone	M2A1
Isotype	IgG1, kappa
Target Name	IgM
Species	Rat
Immunogen	Rat IgM hybridoma
Conjugation	FITC

Application Instructions

Application table	Application	Dilution
	ELISA	Assay-dependent
	FACS	< 1 µg/10 ⁶ cells
	FLISA	1:200 - 1:400
	ICC/IF	Assay-dependent
	IHC-Fr	Assay-dependent
Application Note	* The dilutions indicate recommended starting dilutions and the optimal dilutions or concentrations should be determined by the scientist.	

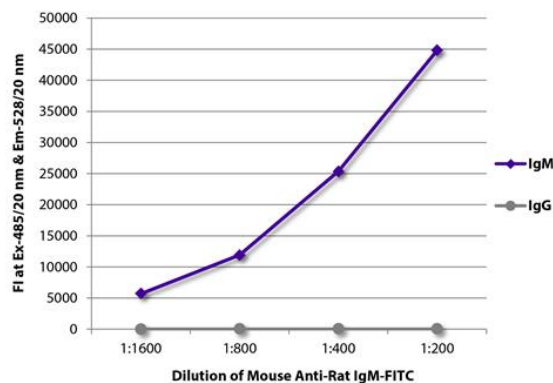
Properties

Form	Liquid
Buffer	PBS and 0.1% Sodium azide.
Preservative	0.1% Sodium azide
Concentration	0.5 mg/ml
Storage instruction	Aliquot and store in the dark at 2-8°C. Keep protected from prolonged exposure to light. Avoid repeated freeze/thaw cycles. Suggest spin the vial prior to opening. The antibody solution should be gently mixed before use.
Note	For laboratory research only, not for drug, diagnostic or other use.



ARG23835 Mouse anti-Rat IgM antibody [M2A1] (FITC) FACS image

Flow Cytometry: BALB/c Mouse splenocytes were stained with ARG22038 anti-CD45RC antibody [GL24] followed by ARG23835 Mouse anti-Rat IgM antibody [M2A1] (FITC).



ARG23835 Mouse anti-Rat IgM antibody [M2A1] (FITC) FLISA image

FLISA: FLISA plate was coated with purified Rat IgM and IgG. Immunoglobulins were detected with serially diluted ARG23835 Mouse anti-Rat IgM antibody [M2A1] (FITC).