

ARG23856

Swine anti-Goat IgG (H+L) antibody (FITC), pre-adsorbed

Package: 500 µg

Store at: 4°C

Summary

Product Description	FITC-conjugated Pig Polyclonal antibody recognizes Goat IgG (H+L)
Tested Reactivity	Goat
Tested Application	FACS, FLISA, IHC-Fr, WB
Specificity	Reacts with the heavy and light chains of goat IgG
Host	Pig
Clonality	Polyclonal
Isotype	IgG
Target Name	IgG (H+L)
Species	Goat
Conjugation	FITC

Application Instructions

Pre Adsorbed Human, Rat, and Mouse serum proteins.

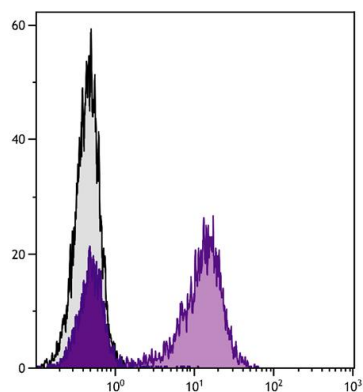
Application table

Application	Dilution
FACS	Assay-dependent
FLISA	1:200 - 1:400
IHC-Fr	Assay-dependent
WB	Assay-dependent

Application Note * The dilutions indicate recommended starting dilutions and the optimal dilutions or concentrations should be determined by the scientist.

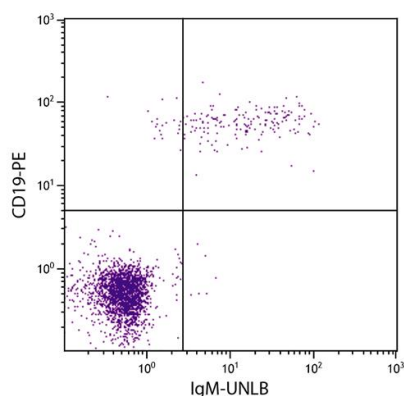
Properties

Form	Liquid
Purification	Affinity purification with immunogen.
Buffer	PBS and 0.1% Sodium azide.
Preservative	0.1% Sodium azide
Concentration	1 mg/ml
Storage instruction	Aliquot and store in the dark at 2-8°C. Keep protected from prolonged exposure to light. Avoid repeated freeze/thaw cycles. Suggest spin the vial prior to opening. The antibody solution should be gently mixed before use.
Note	For laboratory research only, not for drug, diagnostic or other use.



ARG23856 Swine anti-Goat IgG (H+L) antibody (FITC) (pre-adsorbed)
FACS image

Flow Cytometry: BALB/c Mouse splenocytes stained with [ARG21547](#) Goat anti-Mouse Kappa Light Chain antibody (pre-adsorbed) followed by ARG23856 Swine anti-Goat IgG (H+L) antibody (FITC) (pre-adsorbed).



ARG23856 Swine anti-Goat IgG (H+L) antibody (FITC) (pre-adsorbed)
FACS image

Flow Cytometry: Human peripheral blood lymphocytes stained with [ARG21644](#) Goat anti-Human IgM antibody (pre-adsorbed) and [ARG21260](#) anti-CD19 antibody [SJ25-C1] (PE) followed by ARG23856 Swine anti-Goat IgG (H+L) antibody (FITC) (pre-adsorbed).