

ARG23857

Swine anti-Goat IgG (H+L) antibody (HRP), pre-adsorbed

Package: 500 µl

Store at: 4°C

Summary

Product Description	HRP-conjugated Pig Polyclonal antibody recognizes Goat IgG (H+L)
Tested Reactivity	Goat
Tested Application	ELISA, FACS, FLISA, IHC-Fr, IHC-P, WB
Specificity	Reacts with the heavy and light chains of goat IgG
Host	Pig
Clonality	Polyclonal
Isotype	IgG
Target Name	IgG (H+L)
Species	Goat
Conjugation	HRP

Application Instructions

Pre Adsorbed Human, Rat, and Mouse serum proteins.

Application table

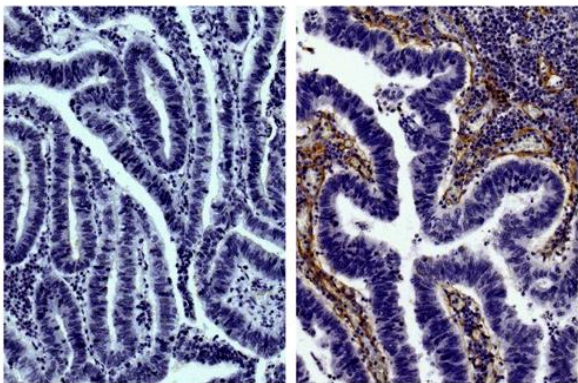
Application	Dilution
ELISA	1:4000 - 1:8000
FACS	Assay-dependent
FLISA	Assay-dependent
IHC-Fr	Assay-dependent
IHC-P	Assay-dependent
WB	Assay-dependent

Application Note * The dilutions indicate recommended starting dilutions and the optimal dilutions or concentrations should be determined by the scientist.

Properties

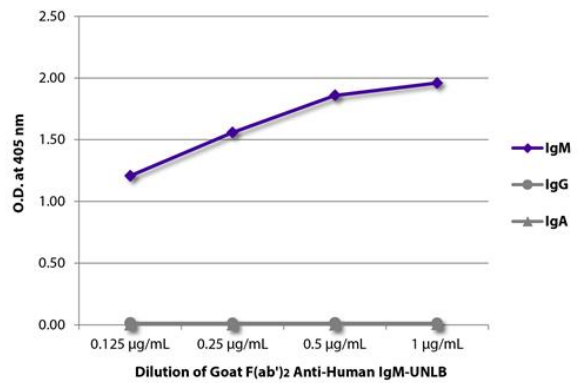
Form	Liquid
Purification	Affinity purification with immunogen.
Buffer	PBS (pH 7.4) and 50% Glycerol.
Stabilizer	50% Glycerol
Storage instruction	Aliquot and store in the dark at 2-8°C. Keep protected from prolonged exposure to light. Avoid repeated freeze/thaw cycles. Suggest spin the vial prior to opening. The antibody solution should be gently mixed before use.

Images



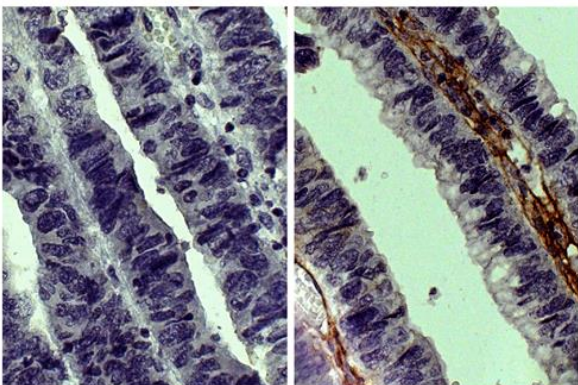
ARG23857 Swine anti-Goat IgG (H+L) antibody (HRP) (pre-adsorbed)
IHC-P image

Immunohistochemistry: Paraffin-embedded Human gastric cancer tissue stained with [ARG23772](#) Goat IgG Isotype Control antibody (left) and [ARG21968](#) anti-Collagen IV antibody (pre-adsorbed) (right), followed by ARG23857 Swine anti-Goat IgG (H+L) antibody (HRP) (pre-adsorbed), DAB and hematoxylin.



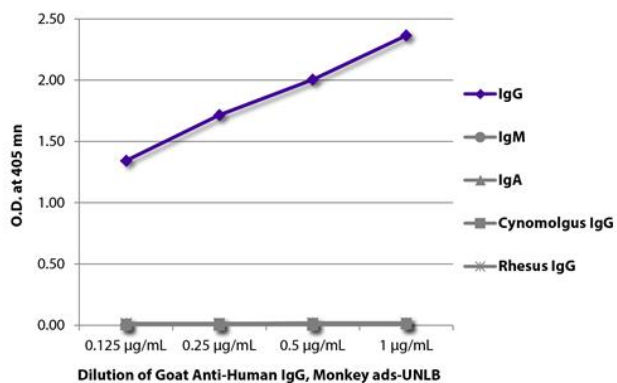
ARG23857 Swine anti-Goat IgG (H+L) antibody (HRP) (pre-adsorbed)
ELISA image

ELISA: The plate was coated with purified Human IgM, IgG, and IgA. Immunoglobulins were detected with serially diluted [ARG21652](#) Goat anti-Human IgM antibody, F(ab')₂ fragment (pre-adsorbed) followed by ARG23857 Swine anti-Goat IgG (H+L) antibody (HRP) (pre-adsorbed).



ARG23857 Swine anti-Goat IgG (H+L) antibody (HRP) (pre-adsorbed)
IHC-P image

Immunohistochemistry: Paraffin-embedded Human gastric cancer tissue stained with [ARG23772](#) Goat IgG Isotype Control antibody (left) and [ARG20786](#) anti-Collagen III antibody (pre-adsorbed) (right) followed by ARG23857 Swine anti-Goat IgG (H+L) antibody (HRP) (pre-adsorbed), DAB and hematoxylin.



ARG23857 Swine anti-Goat IgG (H+L) antibody (HRP) (pre-adsorbed) ELISA image

ELISA: The plate was coated with purified Human IgG, IgM, and IgA, cynomolgus IgG, and rhesus IgG. Immunoglobulins were detected with serially diluted Goat anti-Human IgG antibody followed by ARG23857 Swine anti-Goat IgG (H+L) antibody (HRP) (pre-adsorbed).