

ARG23866 anti-TROP2 antibody [M005]

Package: 50 µl
Store at: -20°C

Summary

Product Description	Mouse Monoclonal antibody [M005] recognizes TROP2
Tested Reactivity	Hu
Tested Application	ELISA, ICC/IF, IP, WB
Specificity	This antibody detects a 50-65 kDa band corresponding to the molecular mass of TROP2 on SDS-PAGE immunoblots of native human A431, MDA-MB-231, and MCF-7 cell lysates. The antibody also detects denatured TROP2, but with less affinity. Lower dilutions of the antibody should be used for denatured western blot. Clone M005 can be used for western blot, immunocytochemistry, ELISA, and immunoprecipitation, as well as for detecting live unfixed cells.
Host	Mouse
Clonality	Monoclonal
Clone	M005
Isotype	IgG1
Target Name	TROP2
Species	Human
Immunogen	Extracellular region of Human TROP2 from the A431 epidermoid carcinoma cell line.
Conjugation	Un-conjugated
Alternate Names	Membrane component chromosome 1 surface marker 1; M1S1; Cell surface glycoprotein Trop-2; TROP2; EGP-1; EGP1; Tumor-associated calcium signal transducer 2; GA733-1; Pancreatic carcinoma marker protein GA733-1; GA7331; GP50

Application Instructions

Application table	Application	Dilution
	ELISA	1:2000
	ICC/IF	1:100
	IP	1:100
	WB	1:1000
Application Note	WB: Antibody is suggested to be diluted in 5% skimmed milk/Tris buffer with 0.04% Tween20 and incubated for 1 hour at room temperature. * The dilutions indicate recommended starting dilutions and the optimal dilutions or concentrations should be determined by the scientist.	
Observed Size	50 - 65 kDa	

Properties

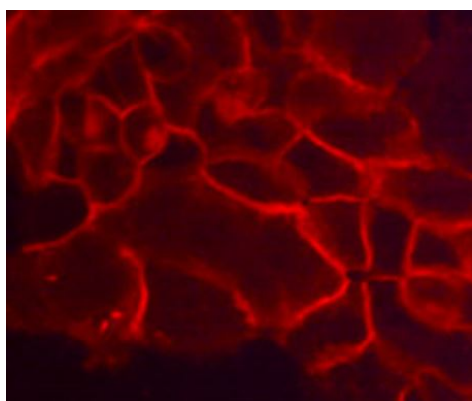
Form	Liquid
------	--------

Purification	Purification with Protein G.
Buffer	PBS, 0.05% Sodium azide, 50% Glycerol and 1 mg/ml BSA.
Preservative	0.05% Sodium azide
Stabilizer	50% Glycerol and 1 mg/ml BSA
Storage instruction	For continuous use, store undiluted antibody at 2-8°C for up to a week. For long-term storage, aliquot and store at -20°C. Storage in frost free freezers is not recommended. Avoid repeated freeze/thaw cycles. Suggest spin the vial prior to opening. The antibody solution should be gently mixed before use.
Note	For laboratory research only, not for drug, diagnostic or other use.

Bioinformation

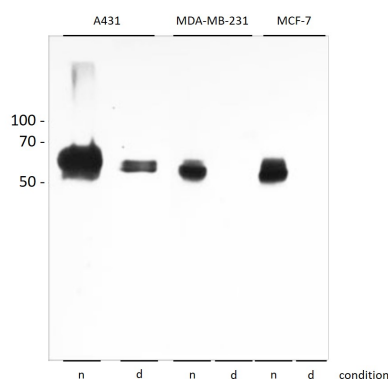
Gene Symbol	TACSTD2
Gene Full Name	tumor-associated calcium signal transducer 2
Background	This intronless gene encodes a carcinoma-associated antigen. This antigen is a cell surface receptor that transduces calcium signals. Mutations of this gene have been associated with gelatinous drop-like corneal dystrophy.[provided by RefSeq, Dec 2009]
Function	May function as a growth factor receptor. [UniProt]
Calculated Mw	36 kDa
PTM	The N-terminus is blocked. [UniProt]

Images



ARG23866 anti-TROP2 antibody [M005] ICC/IF image

Immunofluorescence: Paraformaldehyde-fixed A431 cells stained with ARG23866 anti-TROP2 antibody [M005] (red).



ARG23866 anti-TROP2 antibody [M005] WB image

Western blot: A431, MDA-MB-231 and MCF-7 cell lysates under native ("n") and denatured ("d") conditions. The blots were stained with ARG23866 anti-TROP2 antibody [M005] at 1:1000 dilution.