

ARG23996 anti-Collagen VI antibody

Package: 50 µl
Store at: -20°C

Summary

| | |
|---------------------|---|
| Product Description | Rabbit Polyclonal antibody recognizes Collagen VI |
| Tested Reactivity | Hu |
| Tested Application | ELISA, ICC/IF, IHC-P |
| Host | Rabbit |
| Clonality | Polyclonal |
| Isotype | IgG |
| Target Name | Collagen VI |
| Species | Human |
| Immunogen | Type VI collagen extracted from Human placenta. |
| Conjugation | Un-conjugated |
| Alternate Names | OPLL; Collagen alpha-1(VI) chain |

Application Instructions

| Application table | Application | Dilution |
|-------------------|---|----------|
| | ELISA | 1:2000 |
| | ICC/IF | 1:40 |
| | IHC-P | 1:500 |
| Application Note | IHC-P: Antigen Retrieval: treat sections with 0.5% hyaluronidase at RT for 1hr before staining. * The dilutions indicate recommended starting dilutions and the optimal dilutions or concentrations should be determined by the scientist. | |

Properties

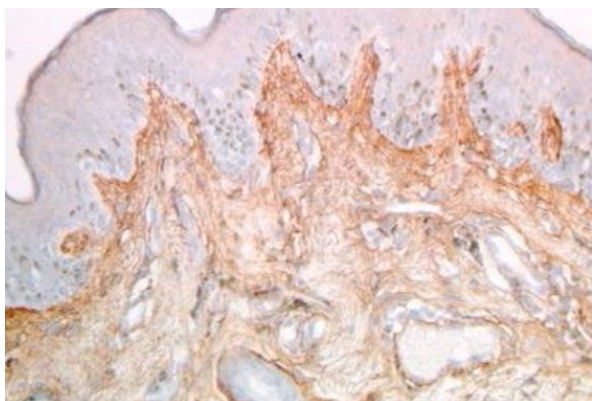
| | |
|---------------------|---|
| Form | Liquid |
| Purification | Purified. |
| Storage instruction | For continuous use, store undiluted antibody at 2-8°C for up to a week. For long-term storage, aliquot and store at -20°C. Storage in frost free freezers is not recommended. Avoid repeated freeze/thaw cycles. Suggest spin the vial prior to opening. The antibody solution should be gently mixed before use. |
| Note | For laboratory research only, not for drug, diagnostic or other use. |

Bioinformation

| | |
|----------------|----------------------------|
| Gene Symbol | COL6A1 |
| Gene Full Name | collagen, type VI, alpha 1 |

| | |
|-----------------------|---|
| Background | The collagens are a superfamily of proteins that play a role in maintaining the integrity of various tissues. Collagens are extracellular matrix proteins and have a triple-helical domain as their common structural element. Collagen VI is a major structural component of microfibrils. The basic structural unit of collagen VI is a heterotrimer of the alpha1(VI), alpha2(VI), and alpha3(VI) chains. The alpha2(VI) and alpha3(VI) chains are encoded by the COL6A2 and COL6A3 genes, respectively. The protein encoded by this gene is the alpha 1 subunit of type VI collagen (alpha1(VI) chain). Mutations in the genes that code for the collagen VI subunits result in the autosomal dominant disorder, Bethlem myopathy. [provided by RefSeq, Jul 2008] |
| Function | Collagen VI acts as a cell-binding protein. [UniProt] |
| Calculated Mw | 109 kDa |
| PTM | Prolines at the third position of the tripeptide repeating unit (G-X-Y) are hydroxylated in some or all of the chains. [UniProt] |
| Cellular Localization | Secreted, extracellular space, extracellular matrix. [UniProt] |

Images



ARG23996 anti-Collagen VI antibody IHC-P image

Immunohistochemistry: Paraffin-embedded Human skin tissue stained with ARG23996 anti-Collagen VI antibody.
