

ARG24022 anti-Laminin antibody

Package: 50 µl
Store at: -20°C

Summary

Product Description	Rabbit Polyclonal antibody recognizes Laminin
Tested Reactivity	Ms
Tested Application	ELISA, ICC/IF, IHC-P
Host	Rabbit
Clonality	Polyclonal
Isotype	IgG
Target Name	Laminin
Species	Mouse
Immunogen	Laminin extracted from Mouse EHS tumor tissues.
Conjugation	Un-conjugated
Alternate Names	S-LAM-alpha; LAMA; Laminin-1 subunit alpha; PTBHS; Laminin-3 subunit alpha; S-LAM alpha; S-laminin subunit alpha; Laminin A chain; Laminin subunit alpha-1

Application Instructions

Application table	Application	Dilution
	ELISA	1:2000
	ICC/IF	1:40
	IHC-P	1:500
Application Note	* The dilutions indicate recommended starting dilutions and the optimal dilutions or concentrations should be determined by the scientist.	

Properties

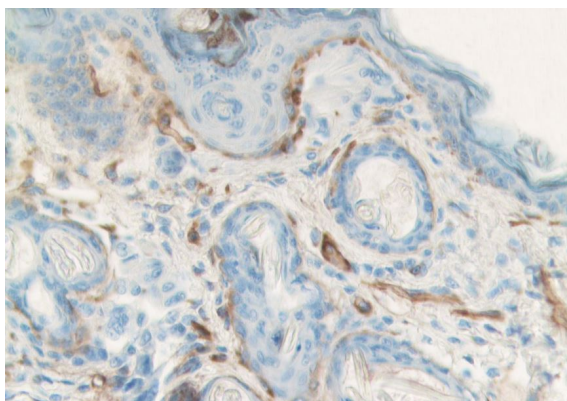
Form	Liquid
Purification	Purified.
Storage instruction	For continuous use, store undiluted antibody at 2-8°C for up to a week. For long-term storage, aliquot and store at -20°C. Storage in frost free freezers is not recommended. Avoid repeated freeze/thaw cycles. Suggest spin the vial prior to opening. The antibody solution should be gently mixed before use.
Note	For laboratory research only, not for drug, diagnostic or other use.

Bioinformation

Gene Symbol	LAMA1
Gene Full Name	laminin, alpha 1

Background	This gene encodes one of the alpha 1 subunits of laminin. The laminins are a family of extracellular matrix glycoproteins that have a heterotrimeric structure consisting of an alpha, beta and gamma chain. These proteins make up a major component of the basement membrane and have been implicated in a wide variety of biological processes including cell adhesion, differentiation, migration, signaling, neurite outgrowth and metastasis. Mutations in this gene may be associated with Poretti-Boltshauser syndrome. [provided by RefSeq, Sep 2014]
Function	Binding to cells via a high affinity receptor, laminin is thought to mediate the attachment, migration and organization of cells into tissues during embryonic development by interacting with other extracellular matrix components. [UniProt]
Calculated Mw	337 kDa
PTM	Tyrosine phosphorylated by PKDCC/VLK. [UniProt]
Cellular Localization	Secreted, extracellular space, extracellular matrix, basement membrane. Note=Major component. [UniProt]

Images



ARG24022 anti-Laminin antibody IHC-P image

Immunohistochemistry: Paraffin-embedded Mouse skin tissue stained with ARG24022 anti-Laminin antibody.
