

ARG24053 anti-Biotin antibody [SB58c] (PE)

Package: 100 µg
Store at: 4°C

Summary

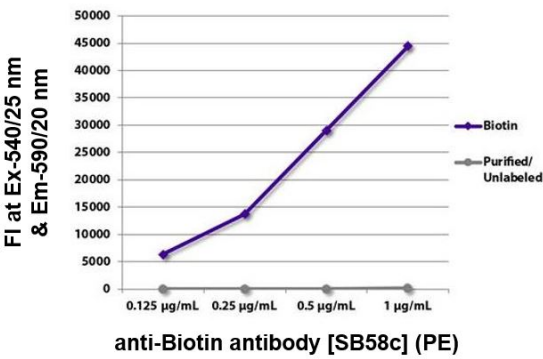
Product Description	PE-conjugated Mouse Monoclonal antibody [SB58c] recognizes Biotin
Tested Reactivity	Other
Tested Application	FACS, FLISA, WB
Host	Mouse
Clonality	Monoclonal
Clone	SB58c
Isotype	IgG1
Target Name	Biotin
Species	Others
Immunogen	KLH-conjugated Biotin
Conjugation	PE

Application Instructions

Application table	Application	Dilution
	FACS	0.1 µg/10 ⁶ cells
	FLISA	1 µg/ml
	WB	Assay-dependent
Application Note	* The dilutions indicate recommended starting dilutions and the optimal dilutions or concentrations should be determined by the scientist.	

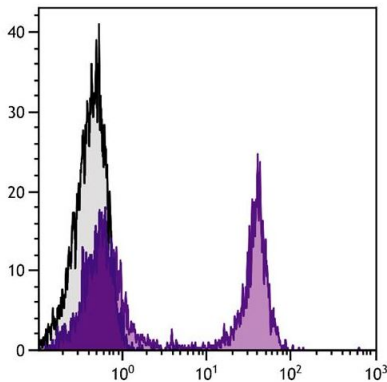
Properties

Form	Liquid
Purification	Affinity purification with immunogen.
Buffer	PBS, 0.1% Sodium azide and Sucrose.
Preservative	0.1% Sodium azide
Stabilizer	Sucrose
Concentration	0.5 mg/ml
Storage instruction	Aliquot and store in the dark at 2-8°C. Keep protected from prolonged exposure to light. Avoid repeated freeze/thaw cycles. Suggest spin the vial prior to opening. The antibody solution should be gently mixed before use.
Note	For laboratory research only, not for drug, diagnostic or other use.



ARG24053 anti-Biotin antibody [SB58c] (PE) FLISA image

FLISA: The plate was coated with [ARG21905](#) Goat anti-Human IgG antibody (Biotin) (pre-adsorbed) and purified Rat IgG2b kappa. Biotin conjugated antibody and purified immunoglobulin were detected with serially diluted ARG24053 anti-Biotin antibody [SB58c] (PE).



ARG24053 anti-Biotin antibody [SB58c] (PE) FACS image

Flow Cytometry: BALB/c Mouse splenocytes were stained with [ARG22026](#) anti-CD45R / B220 antibody [RA3-6B2] (Biotin) followed by ARG24053 anti-Biotin antibody [SB58c] (PE).